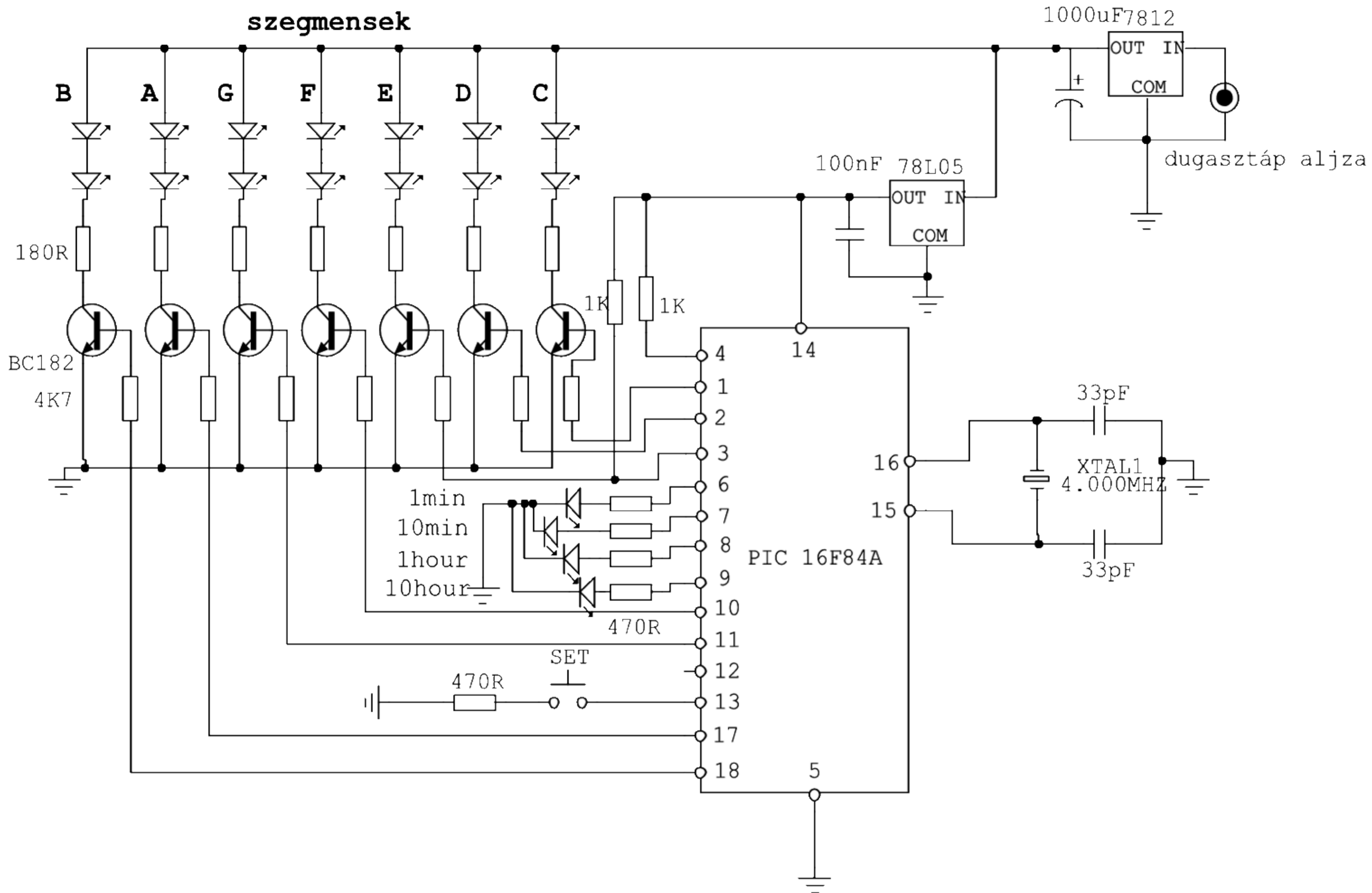
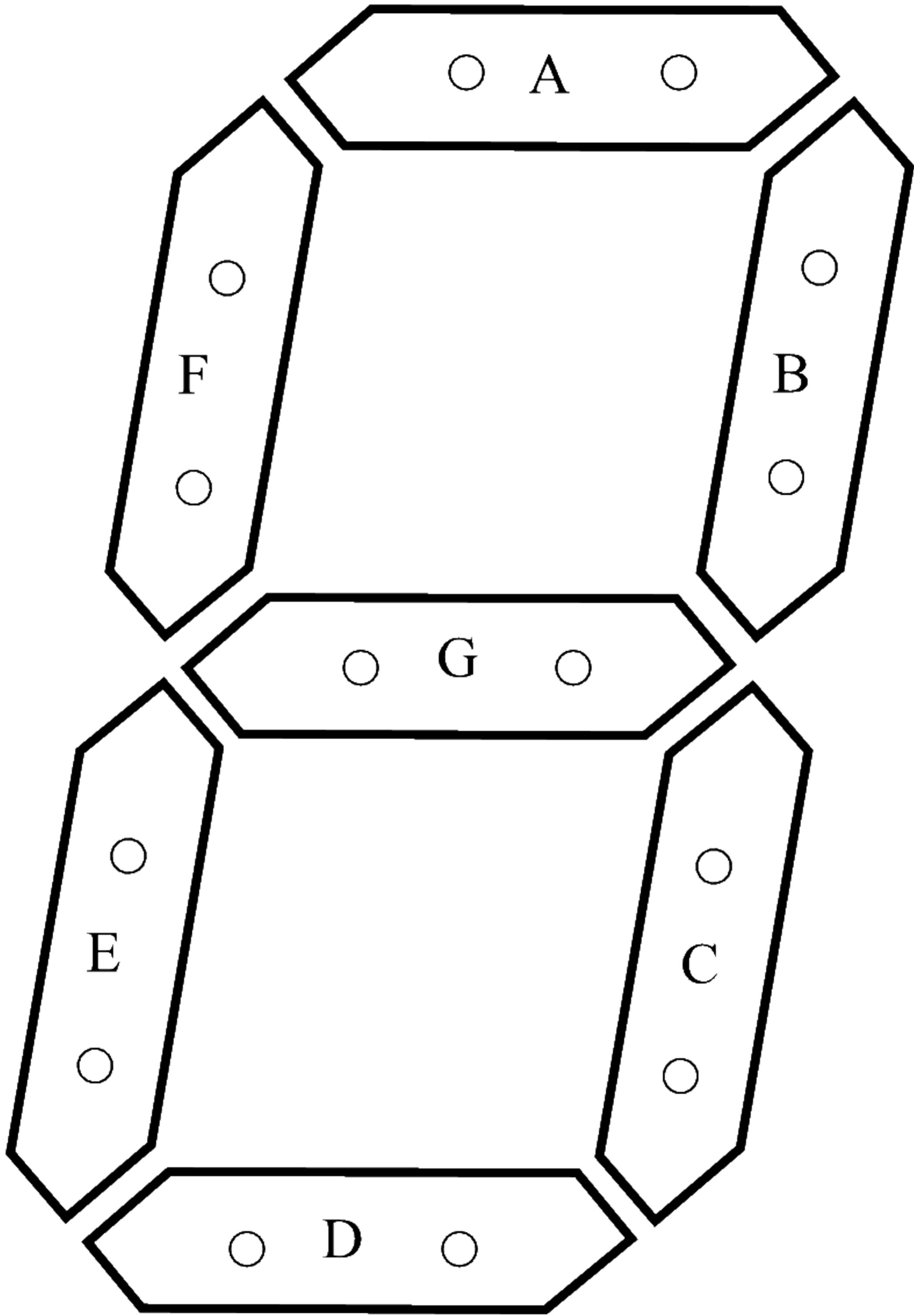
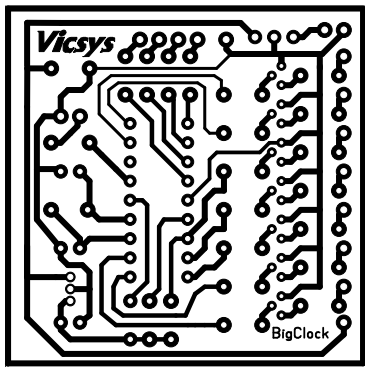


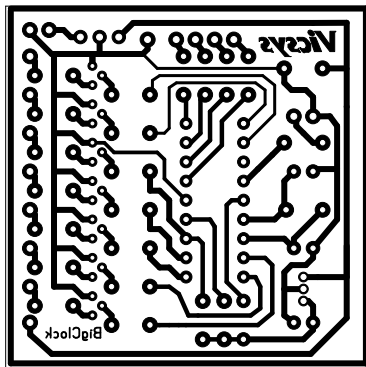
szegmensek

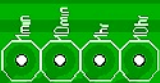




○ ○ ○ ○







BigClock

power input

DC182

Vicsys

power input

L70 DNG NI

4MHz

1000µF

470

470

470

470

4K7

190

5E7

470

4K7

190

33pF

PIC16F84A

4K7

190

4MHz

4K7

190

33pF

4K7

190

GND

78L05

OUT IN

100nF

4K

4K

4K7

190

4K7

190

BigClock

8052

G

F

E

D

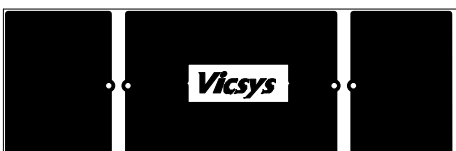
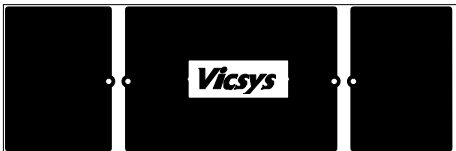
C

B

A

+





The image features a solid blue background with three vertical panels. The central panel contains the 'Vicsys' logo in a white, italicized, sans-serif font, set within a black rectangular box. On either side of this central panel, there is a red circle that overlaps the edge of the blue panel. Inside each red circle, two small white dots are positioned horizontally, resembling eyes or sensor points.

Vicsys

