



Description

PT2323 is a 6-Channel Audio Selector utilizing CMOS Technology specially designed for Home Theater System. It provides a built-in 2-Channel to 6-Channel Translator, which can directly mix traditional stereo channel to simulate a 6-Channel audio output. Single power supply (9V), I²C Bus Interface as well as very low Total Harmonic Distortion (THD < 0.005%) and other features are incorporated into a single chip thereby providing very high performance. Pin assignments and application circuit are optimized for easy PCB layout and cost saving advantages.

Features

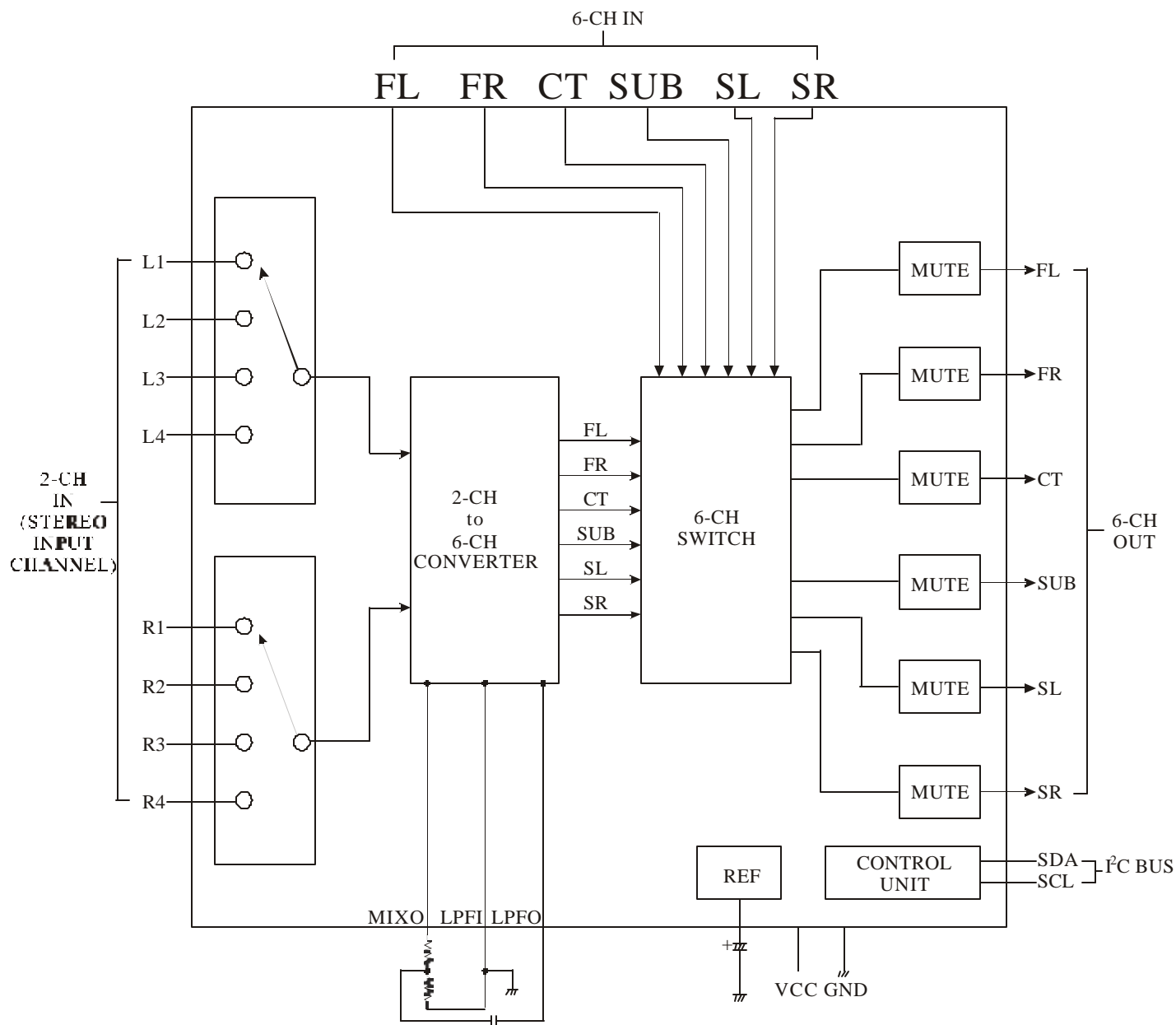
- Supply Voltage: 9V
- 4 Stereo Inputs
- One 6-Channel Input
- Maximum Input Voltage: 3.75Vrms (1kHz, THD<1%)
- Low Total Harmonic Distortion, THD<0.005% (1kHz, 0.2Vrms)
- Low Noise: No<6 uVrms
- I²C Bus Interface
- Available in 28 Pins, DIP or SOP Package

Applications

- AV System
- Mini Compo
- Car Stereo
- Multi-Media Audio Systems

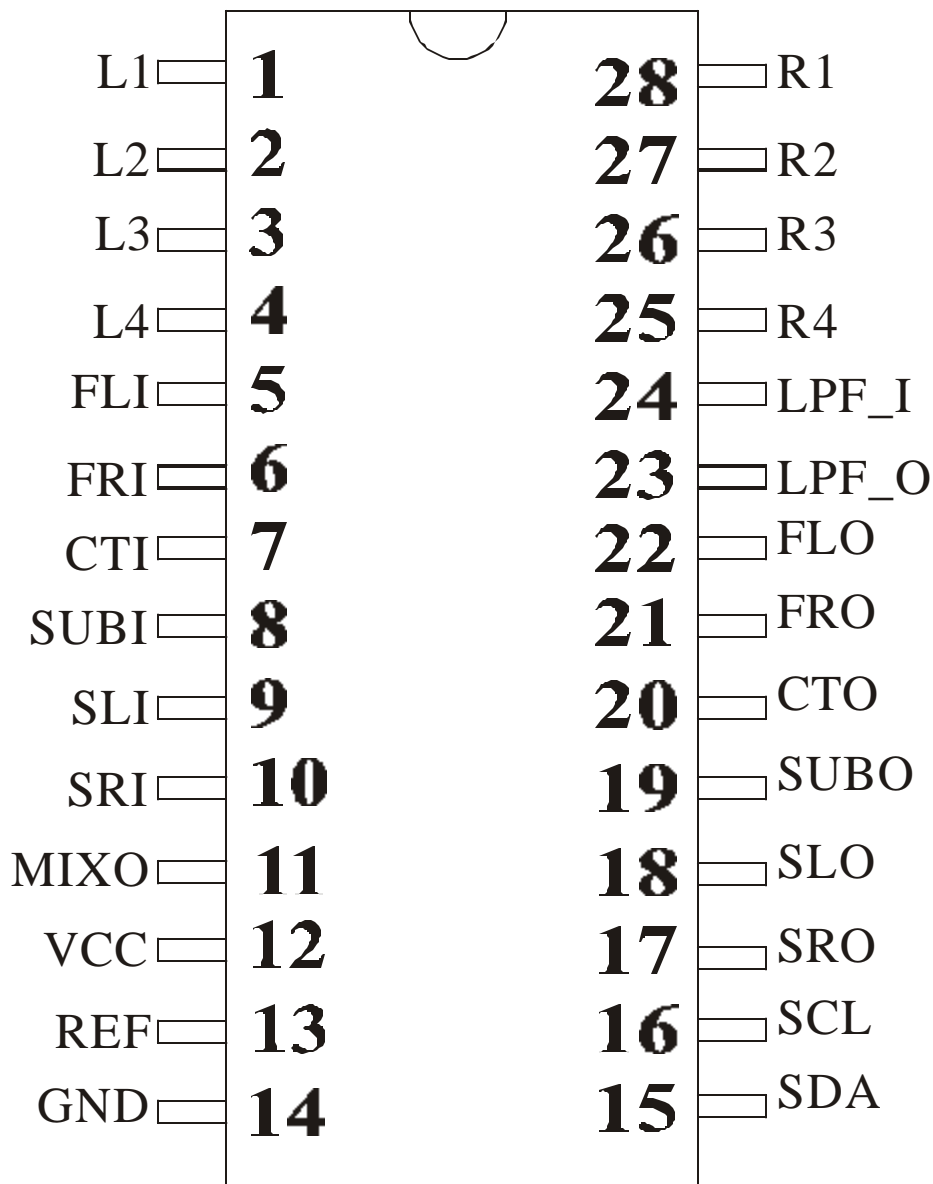


Block Diagram





Pin Configuration



PT2323

**6-Ch Audio Selector****Preliminary****PT2323****Pin Description**

Pin Name	I/O	Description	Pin No.
L1	I	Left Channel Input Pin No. 1	1
L2	I	Left Channel Input Pin No. 2	2
L3	I	Left Channel Input Pin No. 3	3
L4	I	Left Channel Input Pin No. 4	4
FLI	I	6-Ch Front Left Channel Input Pin	5
FRI	I	6-Ch Front Right Channel Input Pin	6
CTI	I	6-Ch Center Channel Input Pin	7
SUBI	I	6-Ch Subwoofer Channel Input Pin	8
SLI	I	6-Ch Rear Left Channel Input Pin	9
SRI	I	6-Ch Rear Right Channel Output Pin	10
MIXO	O	L+R Mixed Input Pins	11
VCC	-	Positive Power Supply	12
REF	O	Reference Voltage (1/2 Vcc)	13
GND	-	Ground Pin	14
SDA	I	I ² C Control Data Input Pin	15
SCL	I	I ² C Control Bus Clock Input Pin	16
SRO	O	6-Ch Rear Right Channel Output Pin	17
SLO	O	6-Ch Rear Left Channel Output Pin	18
SUBO	O	6-Ch Subwoofer Channel Output Pin	
CTO	O	6-Ch Center Channel Output Pin	20
FRO	O	6-Ch Front Right Channel Output Pin	21
FLO	O	6-Ch Front Left Channel Output Pin	22
LPF_O	O	Low Pass Filter Output Pin	23
LPF_I	I	Low Pass Filter Input Pin	24
R4	I	Right Channel Input Pin No. 4	25
R3	I	Right Channel Input Pin No. 3	26
R2	I	Right Channel Input Pin No. 2	27
R1	I	Right Channel Input Pin No. 1	28



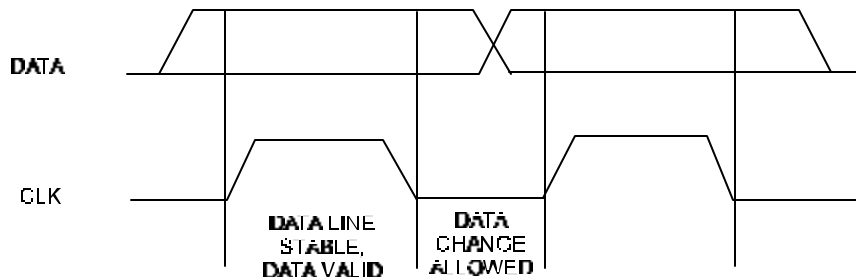
Functional Description

Bus Interface

Data are transmitted to and from the microprocessor to the PT2323 via the SDA and SCL. The SDA and SCL make up the BUS Interface. It should be noted that the pull-up resistors must be connected to the positive supply voltage.

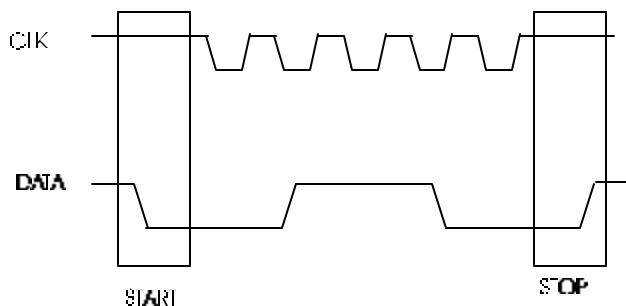
Data Validity

A data on the SDA Line is considered valid and stable only when the SCL Signal is in HIGH State. The HIGH and LOW States of the SDA Line can only change when the SCL signal is LOW. Please refer to the figure below.



Start and Stop Conditions

A Start Condition is activated when 1) the SCL is set to HIGH and 2) SDA shifts from HIGH to LOW State. The Stop Condition is activated when 1) SCL is set to HIGH and 2) SDA shifts from LOW to HIGH State. Please refer to the timing diagram below.



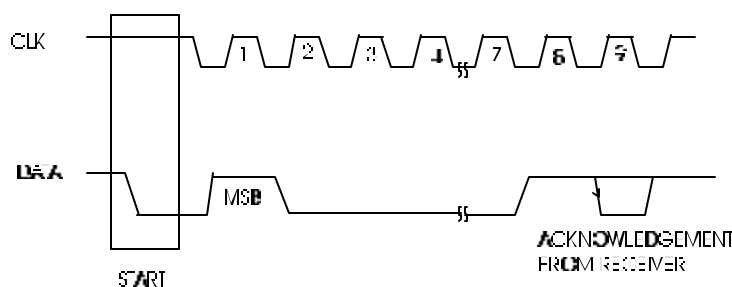


Byte Format

Every byte transmitted to the SDA Line consists of 8 bits. Each byte must be followed by an Acknowledge Bit. The MSB is transmitted first.

Acknowledge

During the Acknowledge Clock Pulse, the master (μ P) puts a resistive HIGH level on the SDA Line. The peripheral (audio processor) that acknowledges has to pull-down (LOW) the SDA line during the Acknowledge Clock Pulse so that the SDA Line is in a Stable Low State during this Clock Pulse. Please refer to the diagram below.



The audio processor that has been addressed has to generate an Acknowledge after receiving each byte, otherwise, the SDA Line will remain at the High Level during the ninth (9th) Clock Pulse. In this case, the master transmitter can generate the STOP Information in order to abort the transfer.

Transmission without Acknowledge

If you want to avoid the acknowledge detection of the audio processor, a simpler μ P transmission may be used. Wait one clock and do not check the slave acknowledge of this same clock then send the new data. If you use this approach, there are greater chances of faulty operation as well as decrease in noise immunity.



6-Ch Audio Selector

Preliminary

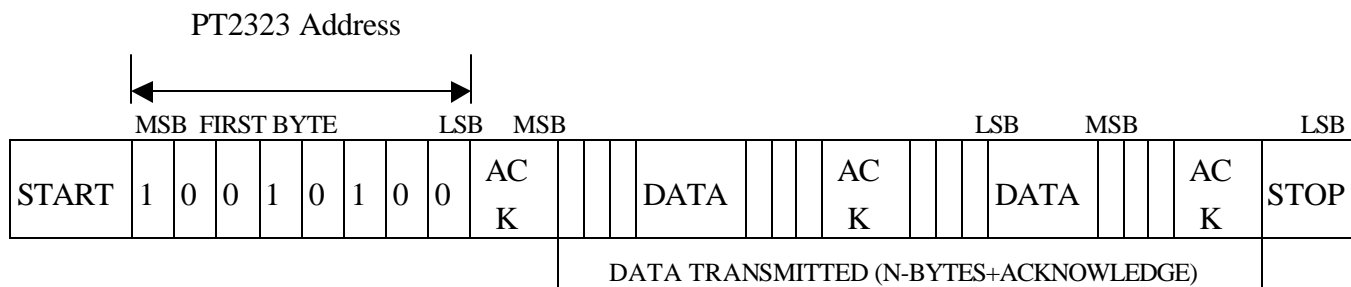
PT2323

Interface Protocol

The interface protocol consists of the following:

- A Start Condition
- A Chip Address Byte = 10010100
- ACK = Acknowledge Bit
- A Sub-Address
- A Data Byte
- A Stop Condition

Please refer to the diagram below:



Note: ACK = Acknowledge Bit

Maximum Clock Speed = 100k bits / second

Software Specification

PT2323 ADDRESS

PT2323 Address is shown below.

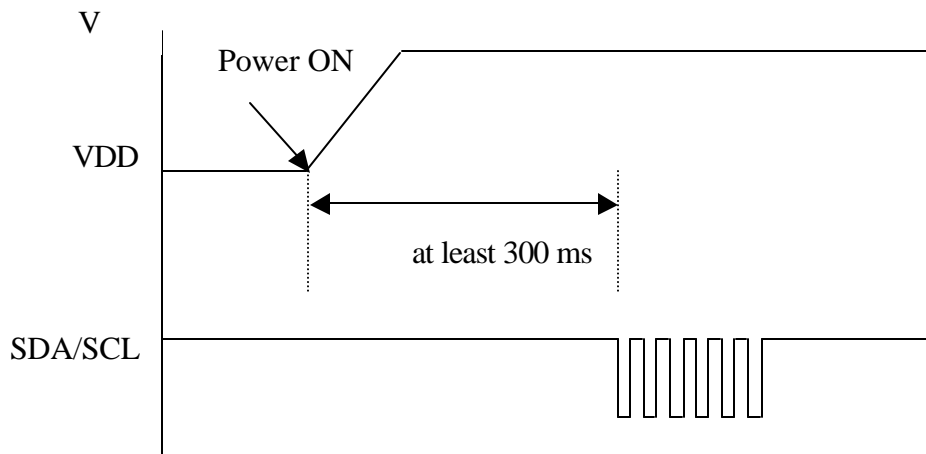
1	0	0	1	0	1	0	0
MSB				LSB			



I²C Bus Start-up timing

After Power is turned ON, PT2323 needs to wait for a short time in order to insure stability. This waiting period is relative to the value of Cref. As the Cref value becomes bigger, the waiting time period for PT2323 to be able to send I²C Bus Signal effectively becomes longer.

For example, if Cref = 10μF, after power is turned ON, the waiting time period for PT2322 to send I²C Bus Signal is at least 300 ms. If the waiting time period is less than 300 ms, I²C Control may fail. Please refer to the diagram below.



Data Bytes

MSB							LSB	Function
1	1	0	0	C3	C2	C1	C0	Input Switch
1	1	1	1	0	0	0	M	FL Mute
1	1	1	1	0	0	1	M	FR Mute
1	1	1	1	0	1	0	M	CT Mute
1	1	1	1	0	1	1	M	SUB Mute
1	1	1	1	1	0	0	M	SL Mute
1	1	1	1	1	0	1	M	SR Mute
1	1	1	1	1	1	1	M	All CH Mute

Notes: M = 1 (Mute Function Enabled)

M=0 (Mute Function Disabled)



6-Ch Audio Selector

Preliminary
PT2323

C3	C2	C1	C0	Function
1	0	0	0	Input Stereo Group 4
1	0	0	1	Input Stereo Group 3
1	0	1	0	Input Stereo Group 2
1	0	1	1	Input Stereo Group 1
0	1	1	1	6-Ch Input

- Notes:
1. Stereo Group 1 consists of L1 and R1.
 2. Stereo Group 2 consist of L2, R2.
 3. Stereo Group 3 consists of L3, R3.
 4. Stereo Group 4 consists of L4, R4.

Add-On Feature

MSB							LSB	Function
1	1	0	1	0	0	0	0	Enhanced Surround Function Active
1	1	0	1	0	0	0	1	Enhanced Surround Function Disabled
1	0	0	1	0	0	0	0	Mixed Channel (-6dB) ON

2-Ch to 6-Ch Translation

PT2323 has a built-in 2-Ch to 6-Ch Translator. Any one of the stereo inputs -- L1/R1, L2/R2, L3/R3, L4/R4 may be selected and converted to a 6-channel output. If the 6-Channel Input is selected, the audio signal just directly flows through the 6-channel output, it is not internally processed by PT2323.

During a 2-Ch to 6-Ch translation processes, the original Left and Right signals are also directly outputted. and only the Center (CT), Subwoofer (SUB), Rear Right (SR) and the Rear Left (SL) signals are processed by the PT2323.

PT2323 provides individual mute functions which prevent output signals from unused stereo input sources from being heard.



Surround Enhance Function

When the 2-Ch to 6-Ch Translation is enabled, and the Enhanced Surround Function is turned ON, then the Surround Function is enhanced. However, it is suggested that the enhanced surround function be turned OFF when using a stereo input / output channel in order to ensure better crosstalk or stereo separation.

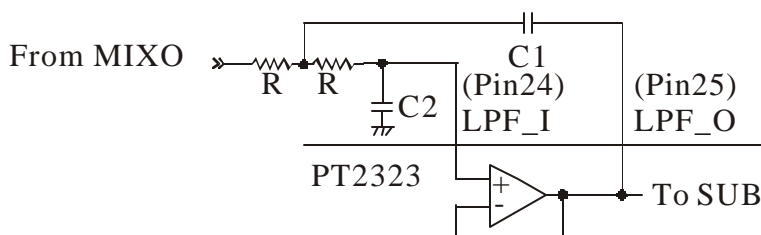
Under the 6-Ch Input, this function is not active. The signals from the 6-Ch input just directly flows through.

Mixed Channel

The Mixed channels consists of the CT and the SUB channels. These 2 channels (CT and SUB) are mixed via the L and R signals. The Mixed Channel is set to -6dB gain since the original L and R channel signals directly flow through output and still includes the CT and the SUB signals. The I²C may be used to turn On the mixed channel.

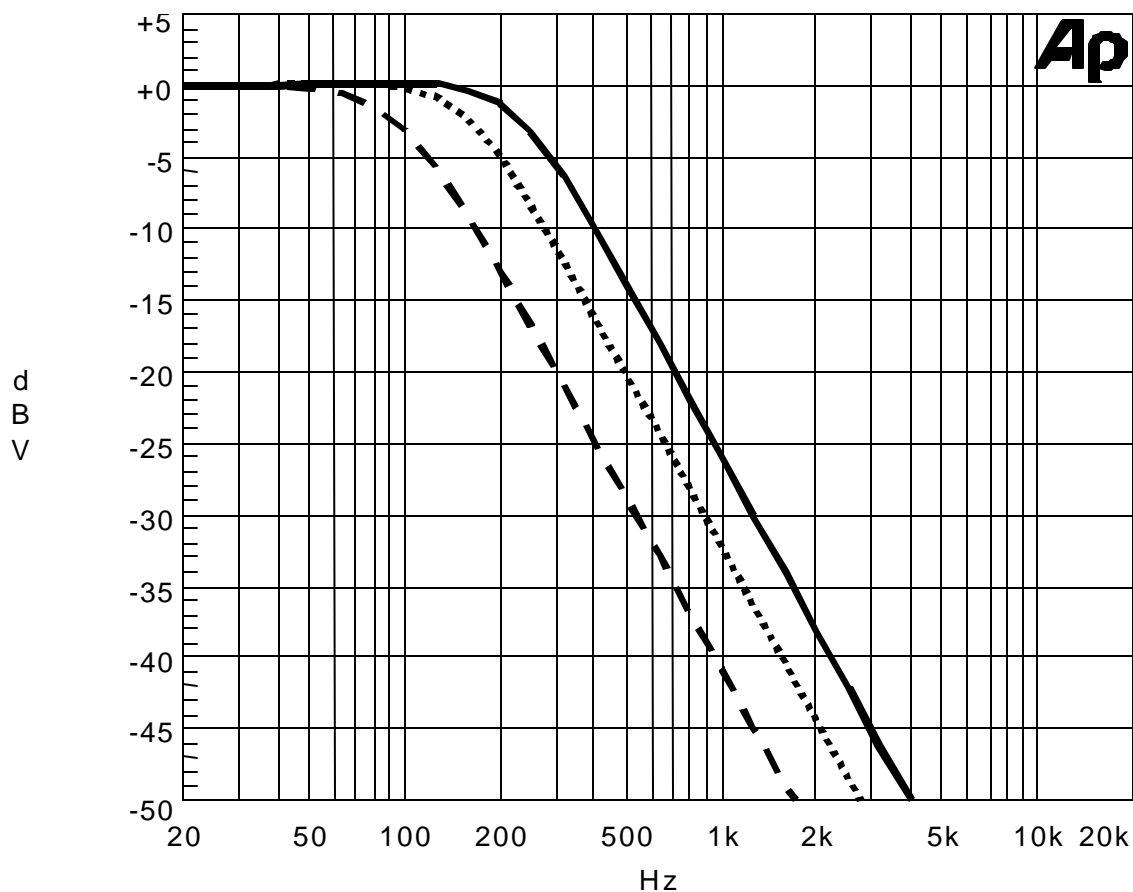
Subwoofer

PT2323 provides an internal OP AMP for the Subwoofer Crossover. An external RC Sallen Key Type Low Pass Filter may be added. Please refer to the diagram below.





Subwoofer Crossover Frequency Response Curve



- Notes:
1. $R=24K$ (where R is the resistor in the Subwoofer Cross-Over Circuit)
 2. ————— : Cross-Over Frequency = 280Hz , $C1 = 0.047\mu f$, $C2 = 0.018\mu f$.
 3. : Cross-Over Frequency = 200Hz , $C1 = 0.068\mu f$, $C2 = 0.027\mu f$.
 4. - - - - : Cross-Over Frequency = 120Hz , $C1 = 0.1\mu f$, $C2 = 0.047\mu f$.
 5. $C1, C2$ = Low Pass Filter Capacitor

Absolute Maximum Rating



6-Ch Audio Selector

Preliminary

PT2323

Symbol	Parameter	Rating	Unit
V _s	Operating Voltage	12	V
T _{amb}	Ambient Temperature	-40 ~ 85	
T _{stg}	Storage Temperature	-55 ~ +150	

Electrical Parameters

Unless otherwise stated : T_{amb}=25 , V_{cc}=9V, R_L=100K , f=1kHz)

Symbol	Parameter	Condition	Min.	Typ.	Max.	Unit
V _{CC}	Supply Voltage		4.5	9	-	V
I _s	Supply Current		-	4	-	mA
THD	Total Harmonic Distortion	Input=0.2V _{rms} A-Weighting	0.001	0.005	-	%
N _O	Output Noise	R _{IS} =600 A-Weighting	-	6	-	μV
SN	Signal to Noise Ratio	0dB=1V _{rms} A-Weighting	-	100	104	dB
V _{IMAX}	Maximum Input Voltage	R _L =50K , 1KHz THD=1%	-	3.75	-	V _{rms}
GN	Voltage Gain	F=1KHz	-1	0	+1	dB
R _{ON}	Internal Switch Impedance		-	200	-	
CT	Cross Talk	V _{in} =1V _{rms}	-	90	-	dB
CS	Channel Separation	V _{in} =1V _{rms}	-	80	-	dB
MUTE	Mute Function	V _{in} =1V _{rms} A-Weighting	-	95	-	dB
V _{IH}	I ² C Bus High Level Input Voltage		0.7 V _{DD}	-	-	V
V _{IL}	I ² C Bus Low Level Input Voltage		-	-	0.3 V _{DD}	V
TINIT	I ² C Bus Initial Time	CREF=10 μf	-	300	-	ms

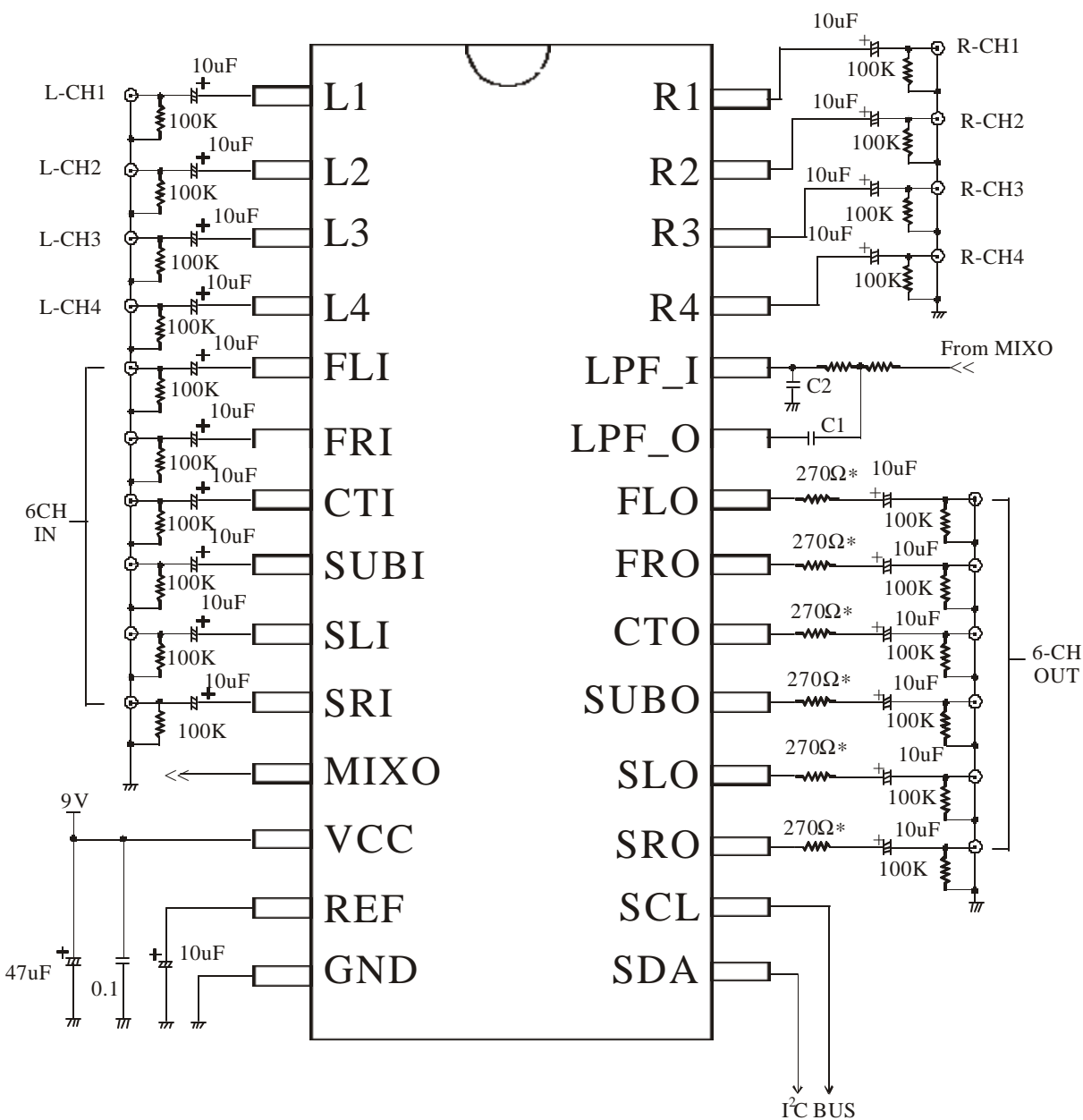
Application Circuit



6-Ch Audio Selector

Preliminary

PT2323

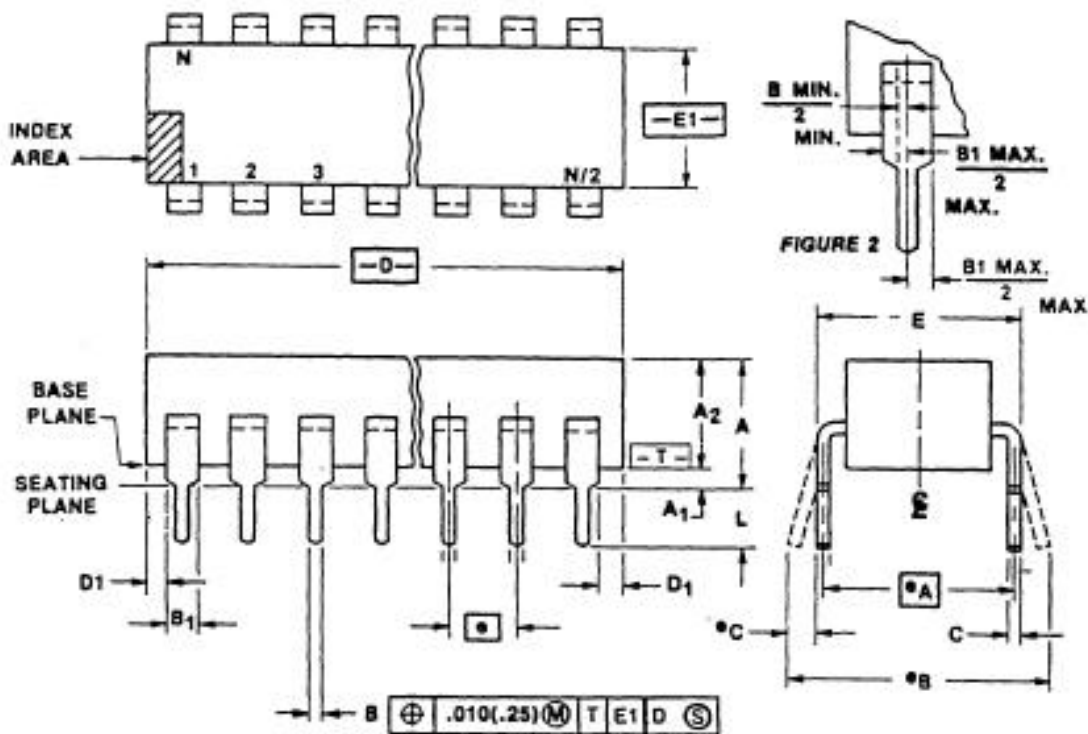


Note: * = An external resistor ($R=270\Omega$) must be connected in series to each of the output pins (FLO, FRO, CTO, SUBO, SLO, SRO) and must be as close as possible to the PT2323 chip.



Package Information

28 Pins, DIP Package (600 mil)



Symbol	Min.	Nom.	Max.
A	-		0.250
A1	0.015		-
A2	0.125		0.195
B	0.014		0.022
B1	0.030		0.070
C	0.008		0.015
D1	0.005		-
E	0.600		0.625
E1	0.485		0.580
e	0.100 BSC.		



6-Ch Audio Selector**Preliminary****PT2323**

eA	0.600 BSC.		
eB	-		0.700
L	0.115		0.200
D	1.380		1.565

Notes :

1. Controlling dimension : INCH
2. Dimensioning and tolerancing per ANSI Y14.5M-1982.
3. Dimensions A, A1 and L are measured with the package seated in JEDEC Seating Plane Gauge GS-3.
4. "D" & "E1" dimensions, for ceramic packages, include allowance for glass overrun and meniscus and lid to base mismatch.
5. "D" & "E1" dimensions for plastic package, do not includes mold flash or protrusion. Mold flash or protrusions shall not exceed 0.01 inch. (0.25mm).
6. "E" and "eA" measured with the leads constrained to be perpendicular to plane T.
7. "eB" and "eC" are measured at the lead tips with the loads un-constrained. "eC" must be zero or greater.
8. "N" is the maximum quantity of lead positions. (N=28)
9. Corner leads (1, N, N/2, and N/2+1) may be configured as shown in Figure 2.
10. Pointed our rounded leads tips are preferred to ease insertion.
11. For automatic insertion, any rained irregularity on the top surface (step, mess, etc.) shall b symmetrical about the lateral and longitudinal package centerlines.
12. Refer JEDEC MS-011 Variation AB.

JEDEC is the trademark of JEDEC SOLID STATE TECHNOLOGY ASSOCIATION.



Tel: (852) 2345 0540 Fax: (852) 2345 9948 Web Site: www.angus.com.hk

PT2323

Symbol	Min.	Nom.	Max.
A	0.0926		0.1043
A1	0.0040		0.0118
B	0.013		0.20
C	0.0091		0.0125
E	0.2914		0.2992
e	0.050 BSC		
H	0.394		0.419
h	0.010		0.029
L	0.016		0.050
D	0.6969		0.7125
	0°		8°



6-Ch Audio Selector

Preliminary

PT2323

Notes :

1. Refer to applicable symbol list.
2. Dimensioning and tolerancing per ANSI Y 14.5M-1982.
3. Dimension "D" does not include mold flash, protrusions or gate burrs. Mold flash, protrusions and gate burrs shall not exceed 0.15mm (0.06 in) per side.
4. Dimension "E" does not include inter-lead flash or protrusions. Inter-lead flash and protrusions shall not exceed 0.25mm (0.10 in) per side.
5. The chamfer on the body is optional. If it is not present, a visual index feature must be located within the crosshatched area.
6. "L" is the length of terminal for soldering to a substrate.
7. "N" is the number of terminal positions. (N=28)
8. Terminal numbers are shown for reference only.
9. The lead width "B" as measured 0.36mm (0.14 in) or greater above the seating plane, shall not exceed a maximum value of 0.61mm (0.24 in).
10. Controlling dimension: INCHES.
11. Refer to JEDEC MS-013 Variation AE.

JEDEC is the trademark of JEDEC SOLID STATE TECHNOLOGY ASSOCIATION.



6-Ch Audio Selector

Preliminary

PT2323

Revision History

Date	Revision	Document No.	Remarks
Oct. 11, 2001	01	PT2323 pre 1.0	Approval No. 011003