

DEFECTIVE OR INCOMPLETE DISPLAY ON LCDA SCREEN

Problems encountered

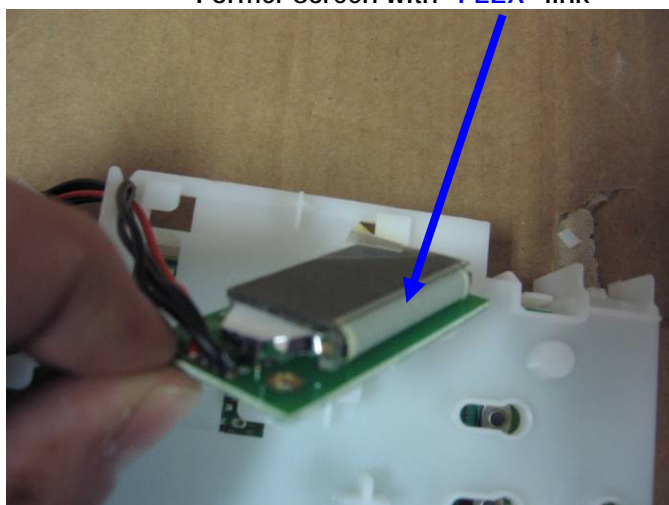
Products concerned: Top Malice Evolution and Maxitop machines with LCDA screen (E3)

Description of the problem: Faulty or incomplete display on the screen

Source of the problem: Weakness in the link between the flex (28 wires) and the screen.

Factory action: Removal of the "flex" link and replacement by direct 28 metal pin connection between the screen and the printed circuit board.

Former screen with "FLEX" link



New screen with "METAL PIN" link



ASS action or solution: This new screen is available as a spare part under reference AS0000284, to avoid having to exchange the circuit board.

IRIS coding:

3	X	1	8	1	3	X	G	0	6		T	A	
---	---	---	---	---	---	---	---	---	---	--	---	---	--

IRIS Conversion:

After a certain time
Display

Above
Poor contact

Another display problem
Replacement (component, module)