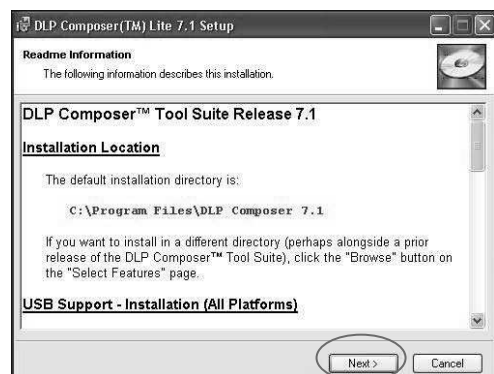
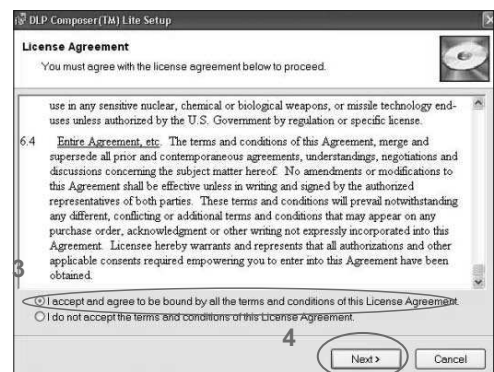
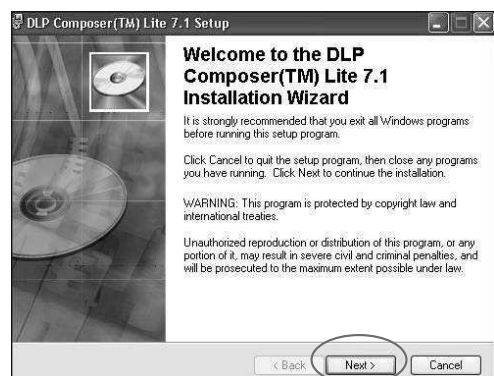


5-2 DLP Composer Lite Setup Procedure

1. Choose "DLP Composer Lite V7.1 Setup" Program.
2. Click "Next" button.
3. Read "License Agreement".
 - Choose "I accept and agree to be bound by all the terms and conditions of this License Agreement".
4. Click "Next".
5. Click "Next".

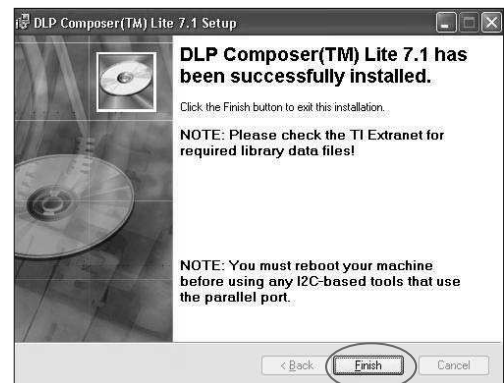
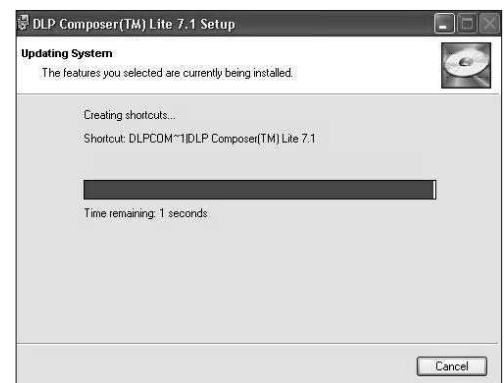
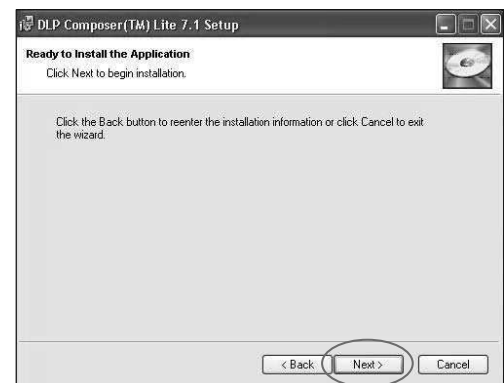
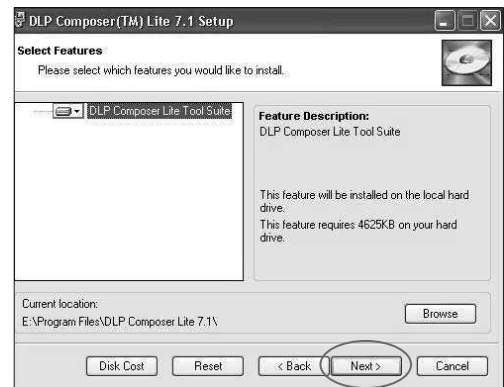


6. Click "Next".

7. Click "Next".

8. Writing system registry values.

9. Click "Finish".



5-3 Firmware Upgrade Procedure

1. Set-up

- Hold on "menu" and "input" buttons and plug in power cord.
- Once the Power LED blink in Yellow & Red at the same time, plug in RS232 cable into the projector and link to the RS232 port of a PC.

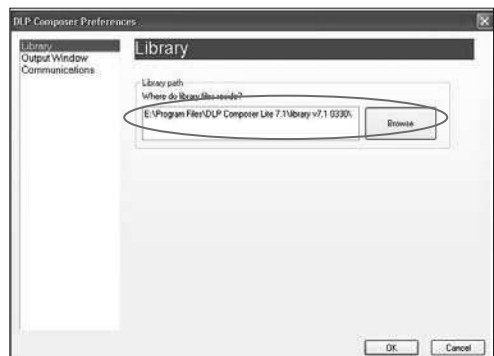
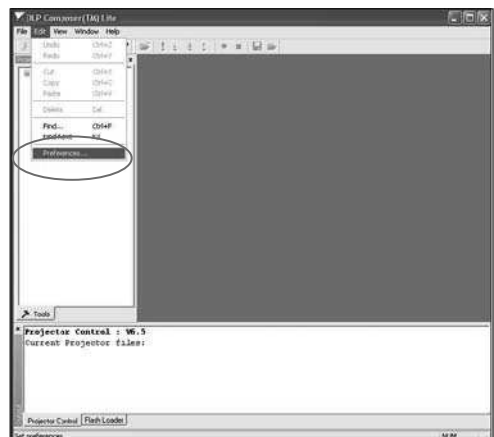
Note: The system fan and the light will not operated.

2. Execute the "DLP Compose™" file.

3. Click "edit" and "perferences".

4. Click "Library."

- Click the "browse" button and navigate to the directory where you put the library file in.

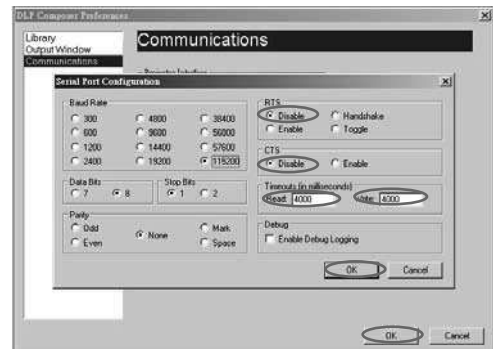
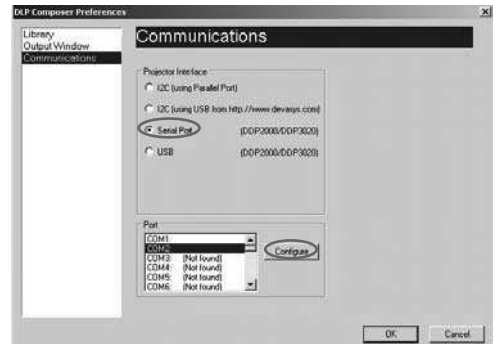


5. Select "Edit\preferences\Communications"

- Choose "Serial Port".
- Choose "COM2" then click "Configure"

Note: Choose the COM Port which you are using.

- Choose "Disable" in "RTS" and "CTS" item.
- Key in "4000" in "Read" and "Write" box
- Click "OK"
- Click "OK"

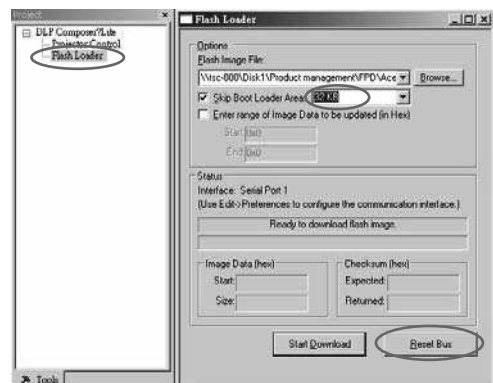
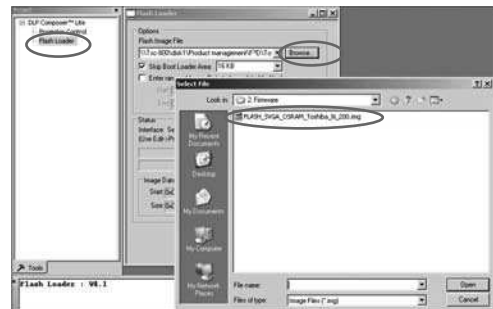


6. Choose "Flash Loader".

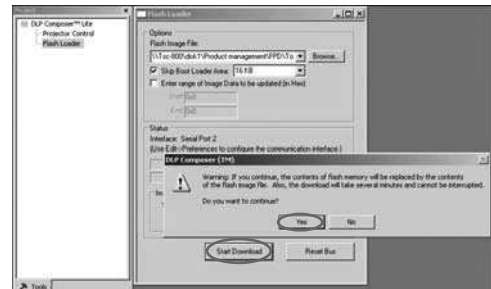
- Click "Browse" to search the firmware file.

7. Select the item "skip Boot Loader Area" (select 32KB).

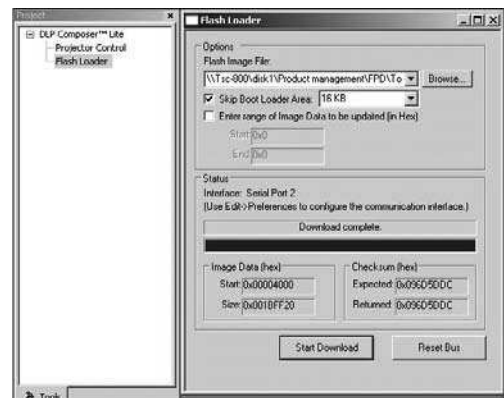
- Click "Reset Bus" to erase the flash memory.



8. Click "start download" to process the firmware upgrade.
 - Click "Yes" to erase the flash memory.

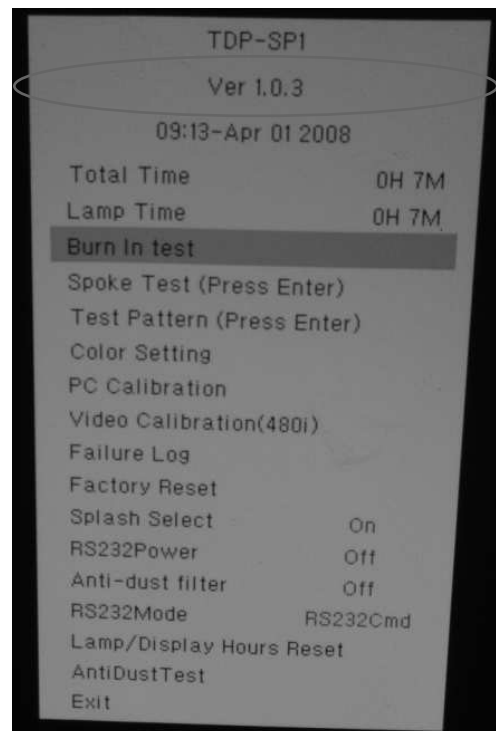


9. When firmware upgrade process is finished, the unit return to stand-by status.
 - Unplug RS232 cable and power cord and replug in power cable.



10. Restart the unit and enter the service mode to check the firmware version.

(To enter service mode, please refer to Chapter 4 Function Test and Alignment Procedure.)



EDID Upgrade (Factory only)

6-1 EDID Introduction

Extended Display Identification Data is a VESA standard data format that contains basic information about a display device and its capabilities, including vendor information, maximum image size, color characteristics, factory pre-set timings, frequency range limits, and character strings for the monitor name and serial number.

The information is stored in the display and is used to communicate with the system through a Display Data Channel (DDC), which sits between the display device and the PC graphics adapter. The system uses this information for configuration purposes, so the monitor and system can work together.

Note: If a display device has digital input ports, like DVI or HDMI, but without EDID in its main board, the display device will show no image while the input source is digital signal.

6-2 Equipment Needed

Software

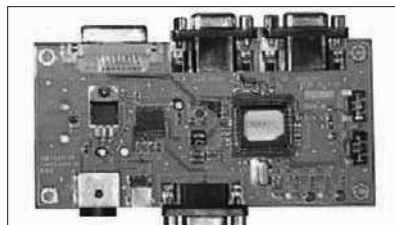
- EDID Program (Generic V0.51)
- EDID File (Toshiba_TDP-SP1_EDID_V02.ini)

Hardware

- Projector
- Generic Fixture for EDID Key-in (Fixture: JP3 must be closed)
- Power cord for Projector
- RS-232 9 Pin Cable (pin to pin, F-M)
- Monitor
- PC
- VGA cable
- Power adapter and power cord for fixture

Note: The EDID upgrade procedure for TDP-SP1/XP1/XP2 is the same.

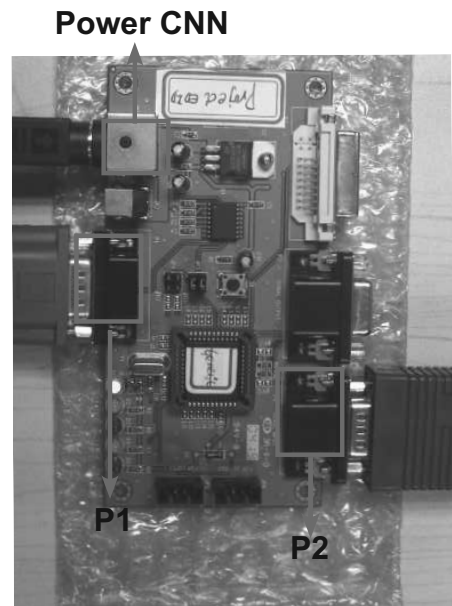
Here, we take TDP-SP1 as an example.



6-3 Setup Procedure (VGA)

1. Connect all ports
 - (1) Connect P1 of Fixture with COM Port of PC/Laptop by RS232 Cable.
 - (2) Connect P2 of Fixture with VGA port of Projector by VGA Cable.
 - (3) Plug Power Adapter to Power CNN.
 - (4) Plug Power Cord to TDP-SP1 unit.

Note: Confirm JP3 is "Close" status.



6-4 EDID Key-In Procedure

1. Execute EDID Program

- (1) Click on "EDID" to execute EDID program.

2. Process

- (1) Check the COM port is "COM 1"
(Select the COM port which you are using).
- (2) Click the "Model" button.
- (3) Choose the source file "Toshiba_TDP-SP1_EDID-V02.ini" and then open it.

3. Process

- (1) In "Write Source Select" item, select "Analog".
- (2) Click "Program" button.

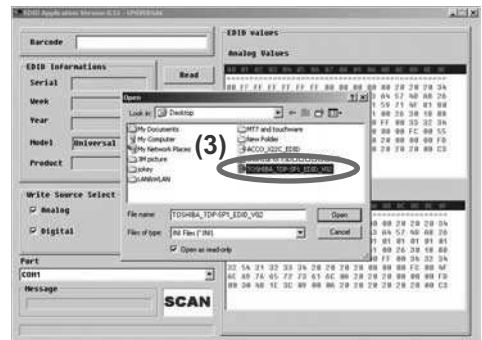
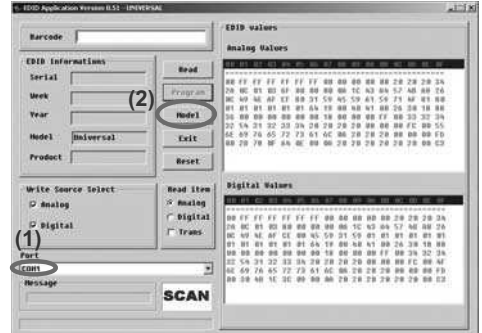
4. Process

- (1) "Please change the cable to Analog" will be shown on the screen.
- (2) Please press "Ok" button.

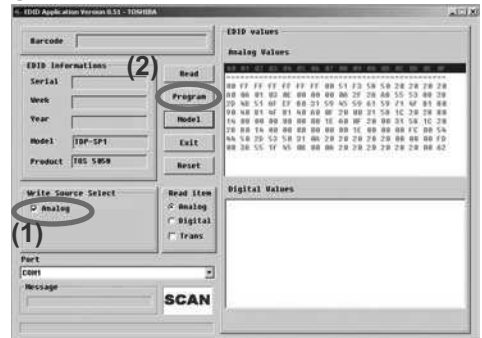
1



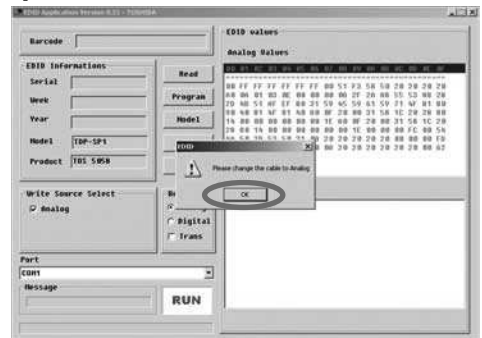
2



3



4



5. Finish

(1) "OK" will be shown on the screen.

6. Read EDID information

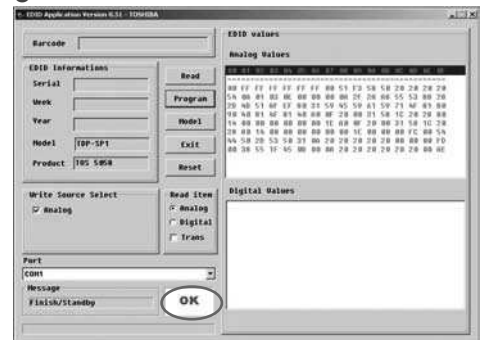
(1) In the Read item, select "Analog" and "Trans".

(2) Please press "Read" button.

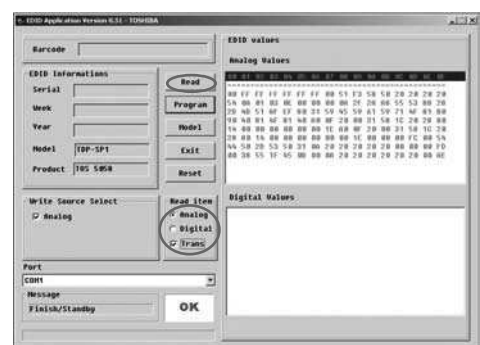
7. Read EDID information

(1) EDID Informations will show the result.

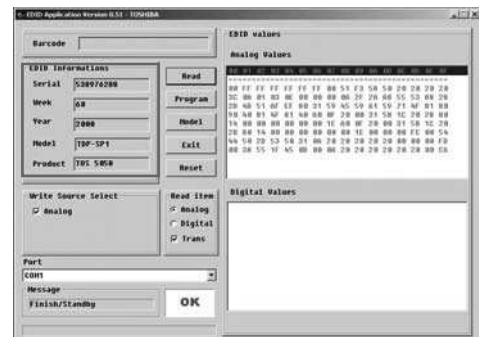
5



6



7



Spare Parts List

7.1 Spare parts list

GREEN

No	Location	Description	Part No		
			SP1	XP1	XP2
1	A001	FOOT ASSY, REAR, RIGHT		75012010	
2	A002	COVER, FRONT		75012011	
3	A003	COVER, LEFT		75012012	
4	A004	HOLDER, IR LENS		75012013	
5	A005	RING, FOCUS		75012014	
6	A006	RING, ZOOM		75012015	
7	A007	COVER, RIGHT		75012016	
8	A008	BUTTON, RETURN		75012017	
9	A009	FOOT ASSY, SPACER		23587276	
10	A010	RUBBER, FOOT, REAR		23587283	
11	A011	COVER ASSY, LAMP		75012029	
12	A012	FOOT ASSY, FRONT		75012030	
13	A013	COVER ASSY, BOTTOM		75012031	
14	A014	COVER ASSY, TOP	75012033	75012703	75013086
15	A015	COVER ASSY, I/O		75012035	
16	A016	CAP ASSY, LENS		75012037	
17	A017	BUTTON, KEYPAD		75012038	
18	E001	CABLE, FFC, 14P P=0.5MM, MAIN TO KEY BOARD		75012003	
19	E002	SWITCH ASSY, THERMAL		75012004	
20	E003	DMD, TYPE-X 800X600 PIXEL 0.55	75012006	-----	-----
21	E003	DMD, 1024X768 PIXEL .55 XGA 2	-----	75012696	-----
22	E003	DMD, 1024X768 PIXEL, 0.55", TYPE-X	-----	-----	75013083
23	E004	FAN ASSY, LAMP, 45X20 BLOWER		75012007	
24	E005	FAN, EXHAUST, KDE1207PKV1-A, 70X70X20MM		75012008	
25	E006	SPEAKER, 2W, 4 OHM, 30MM		75012009	
26	E007	THERMAL PAD, DMD		75012018	
27	E008	THERMAL PAD, UNDER HEAT SINK	75012019	-----	-----
28	E009	HEAT SINK, TOP	75012022	75012697	75012697
29	E010	MASK, DMD		75012023	
30	E011	LIGHT PIPE, OPTICAL		75012024	
31	E012	COLOR WHEEL ASSY	75012025	75012698	
32	E013	OPTICAL BLOCK, SUB FRAME	75012026	75012699	
33	E014	OPTICAL BLOCK	75012027	75012700	75013084
34	E015	SWITCH ASSY, LAMP COVER		75012039	
35	P001	PC BOARD ASSY, POWER, MAIN		75012036	
36	P002	PC BOARD ASSY, POWER, LAMP	75012032	75012702	
37	U001	PC BOARD ASSY, MAIN	75012028	75012701	75013085
38	U001	PC BOARD ASSY, MAIN, CHINA ONLY	75013149	75013150	75013151
39	U002	PC BOARD ASSY, KEYPAD		75012034	
40	U003	PC BOARD ASSY, DMD		75012040	
41	U004	PC BOARD ASSY, COLOR WHEEL		75012041	
42	U005	PC BOARD ASSY, IR SENSOR		75012042	
43	Y001	LABEL, SPECIFICATION, FOR USA	-----	75012690	75013082
44	Y001	LABEL, SPECIFICATION, FOR CHINA	-----	75012691	75012691
45	Y001	LABEL, SPECIFICATION, FOR EUROPE	75011999	-----	75011999

No	Location	Description	Part No		
			SP1	XP1	XP2
46	Y002	OWNER'S MANUAL, CD-ROM	75012000	75012692	
47	Y003	OWNER'S MANUAL, 4 LANGUAGE	75012001	75012693	
48	Y004	OWNER'S MANUAL, CHINESE	75012002	75012694	
49	Y005	CORD, POWER, EU		23587319	
50	Y006	CORD, POWER, UK		23587320	
51	Y007	CORD, POWER, CHINA		23587322	
52	Y008	REMOTE HAND UNIT		75012005	
53	Y009	CASE, SOFT		75012020	
54	Y010	CARTON BOX	75012021	-----	-----
55	Y011	CORD, POWER, US, 3M SP-305/IS-14		75012695	
56	Y012	CABLE, RS232C, 2M 9P FEMALE TO 9P FEMALE		75013148	