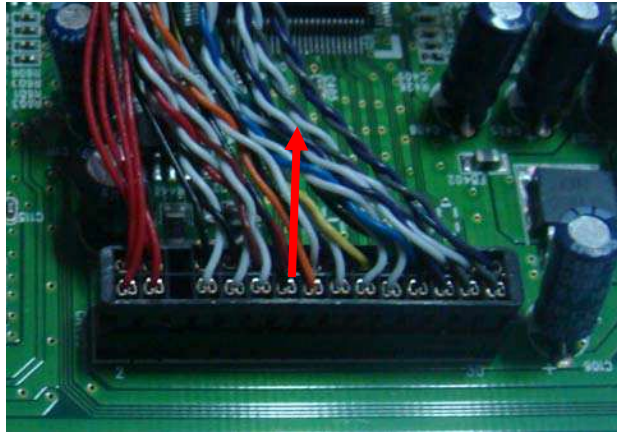
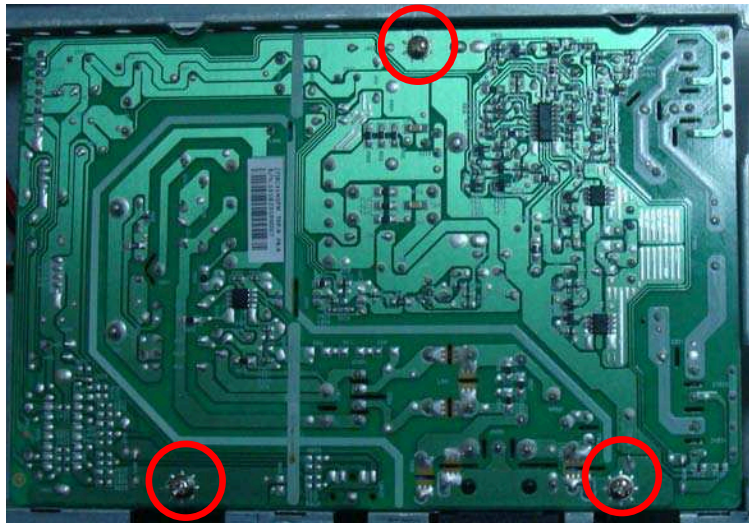


4. Press to disconnect FFC CABLE.



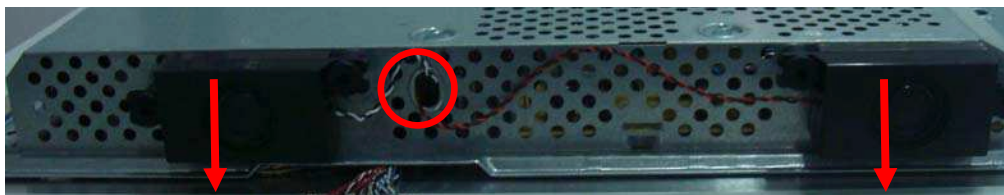
Power Board

Release 3 screws on POWER BOARD and remove POWER BOARD.



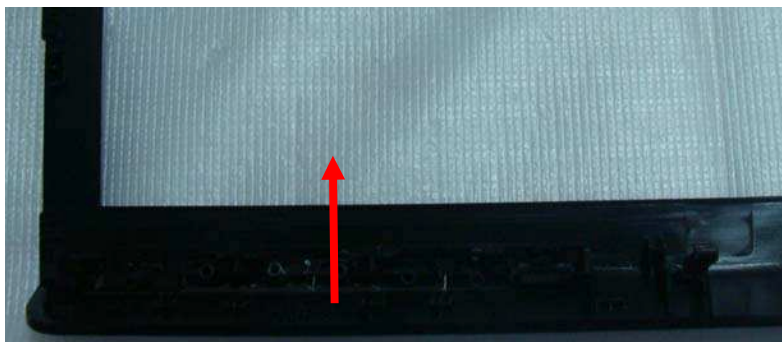
Speaker Module

Pull the SPEAKER CABLE out of the hole and remove SPEAKERS.



7.3.3 Bezel Subsystem

Dismount KEY PAD.



Note: the disassembly way of VH222S is the same as VH222D'S.