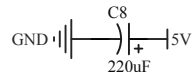
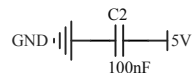
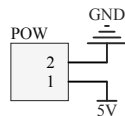
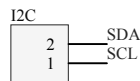
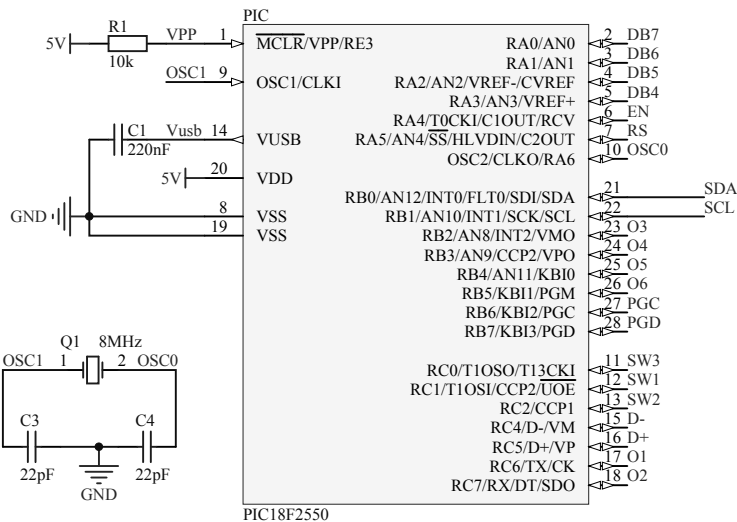
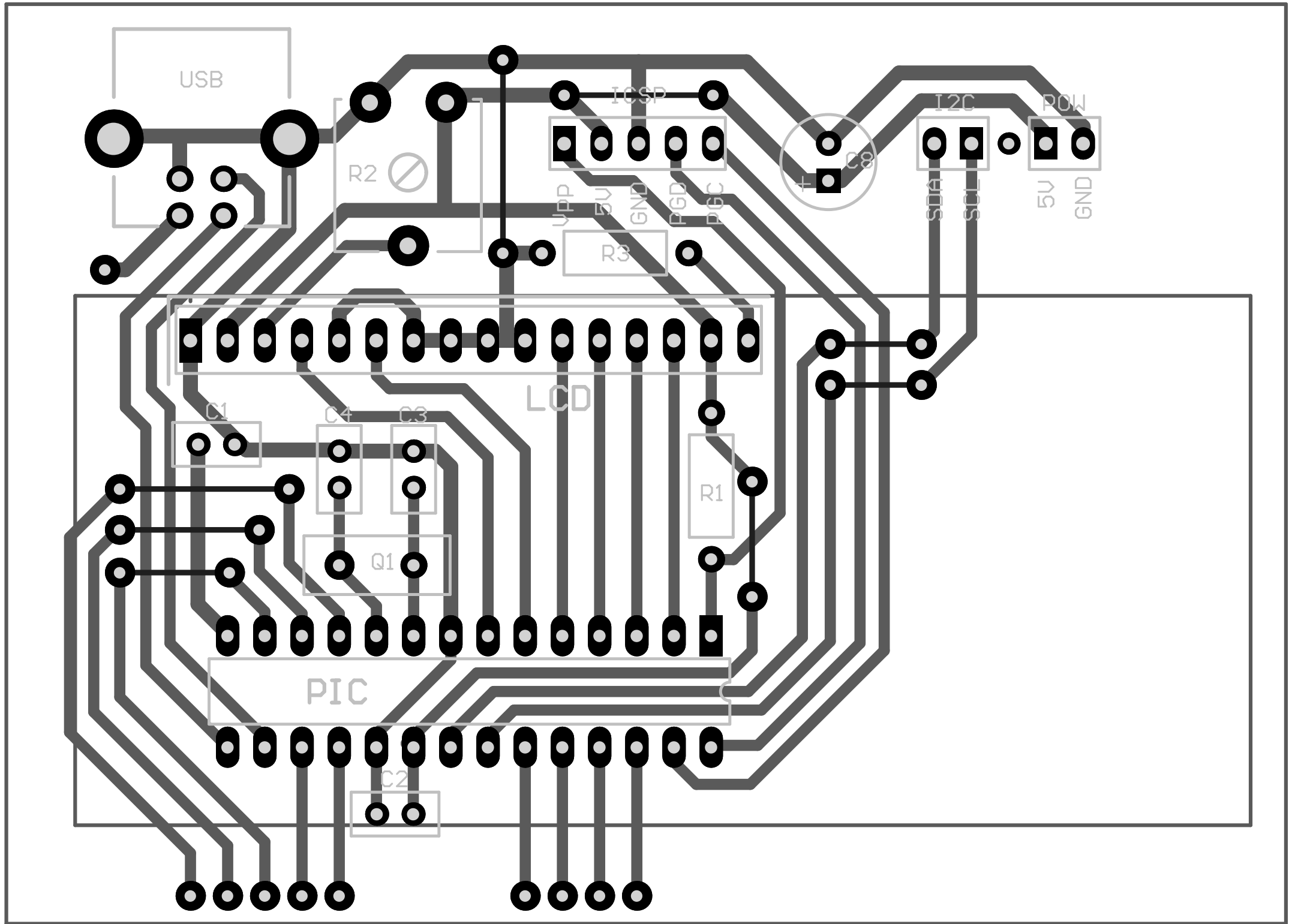


I2C pins on controller are:
 SDA = Limit A- (KeyLim7, RE1)
 SCL = Limit A+ (KeyLim8, RE2)





Designator	Quantity	Comment
C1	1	270nF
C2	1	100nF
C3, C4	2	22pF
C8	1	220uF
I2C, POW	2	Header, 2-Pin
ICSP	1	Header, 5-Pin
LCD	1	LCD
PIC	1	PIC18F2550
Q1	1	Crystal 8MHz
R1	1	10k
R2	1	10k Pot
R3	1	33R
USB	1	TYPE B

