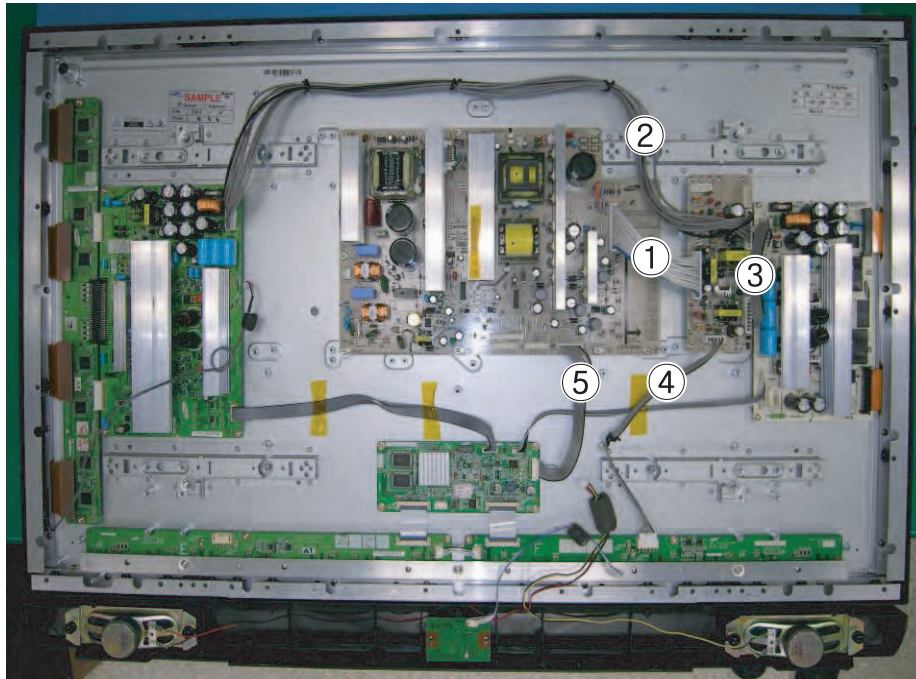


8-2 Partial Wiring

8-2-1 PDP Module ↔ SMPS Wiring



① CN809(Main SMPS) ↔ CN3(DC-DC SMPS)		② CN2(DC-DC SMPS) ↔ CN5007(Y B'D)		③ CN4(DC-DC SMPS) ↔ CN4001(X B'D)		④ CN6(DC-DC SMPS) ↔ CN2509(E-Buffer)		⑤ CN810(Main SMPS) ↔ CN2013(Logic B'D)	
Pin No.	Signal	Pin No.	Signal	Pin No.	Signal	Pin No.	Signal	Pin No.	Signal
1	D5.3V	1	Vs	1	D5.3V	1	RTN	1	STD_5V
2	Vg	2	Vs	2	Vg	2	N.C	2	VS_ON
3	RTN	3	RTN	3	RTN	3	D5.3V	3	N/C
4	RTN	4	RTN	4	RTN	4	N/C	4	PS_ON
5	RTN	5	Vset	5	Ve	5	Va	5	RTN
6	RTN	6	RTN	6	RTN			6	D5.3V
7	RTN	7	Vscan	7	RTN			7	RTN
8	Va	8	RTN	8	Vs			8	RTN
9	Va	9	Vg	9	Vs			9	D5.3V
10	N/C	10	D5.3V					10	D5.3V
11	Vs								
12	Vs								