

ZKE TECH EBC-A05 DC electronic load Bug report

Make by Roland Tóth date.: 2017. April .17 e-mail.: rendszergazdanyh@citromail.hu

Name and version number of the tested software.:

"EB Software Tester V1.8.5 (Build 2016-03-20)"

(1. picture)

Name and version number of the tested hardware.:

"ZKE perform DC CHARGER & EBC-A05"

(2. picture)

The study of these computers and software environment made.:

- Motherboard.: Asrock A770DE+
 - Processor.: AMD Phenom II X4 940
 - RAM.: 8Gb DDRII 800MHz
 - VGA.: ASUS RADEON R7 260X 1Gb GDDR5 RAM
 - System SSD.: OCZ VERTEX2 SATAII 60Gb SSD
- (The hardware is a list of only the most important tools.)

Windows 7 Ultimate 64 bit Service pack 1



(1. picture)



(2. picture)

List of errors in the third picture.

1. The program that is marked in capital letters "M". The time is marked with a small unit "m". Please fix it.
2. The "Start" button plain text type.
The other button (**Stop**, **Monitor**, **Continue**, **Adjust**) text in bold type.
Replace "Start" button type of bold text.
3. "Continue" text does not fit into the button. Increase the width of the button.
4. The "Disconn" button is missing from the end of the text.
Please replace the text of the button "Disconnect".
And if necessary, the button to increase the width to fit into.
5. The "CurveA" is out of the cell. Please increase the cell width to fit into the text.
The "CurveA" and the text should be written separately. Please replace the "Curve A"
The same applies to "CurveV" text. Please replace the "Curve V"
And the cell width to adapt to the new text.



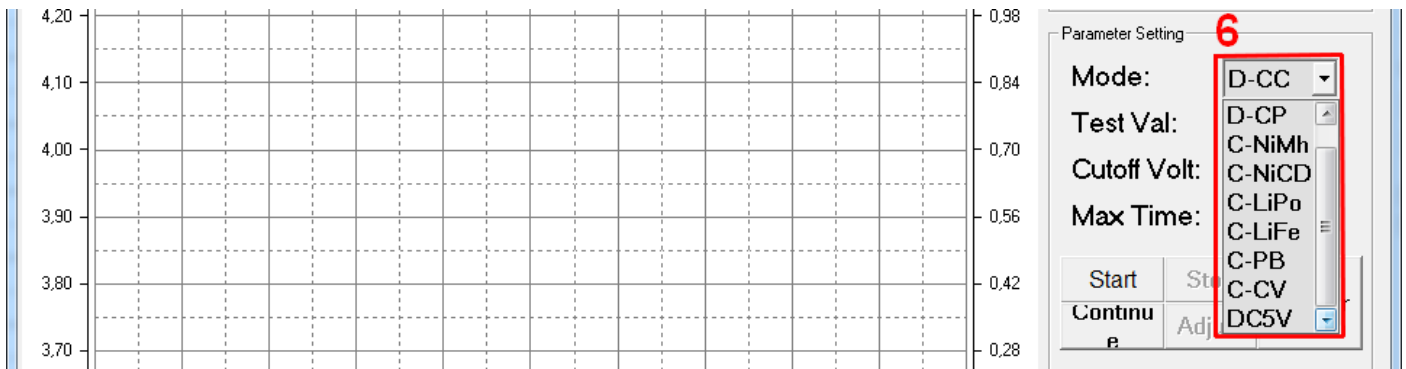
(3. picture)

List of errors in the fourth picture

- The menu selection, "**Lilon**" could not be found.
The exact description of the 18650 size rechargeable battery, "**Lilon**".
Please supplement the missing functionality.

The menu selection is missing the constant voltage discharging mode "**D-CV**" an important function.

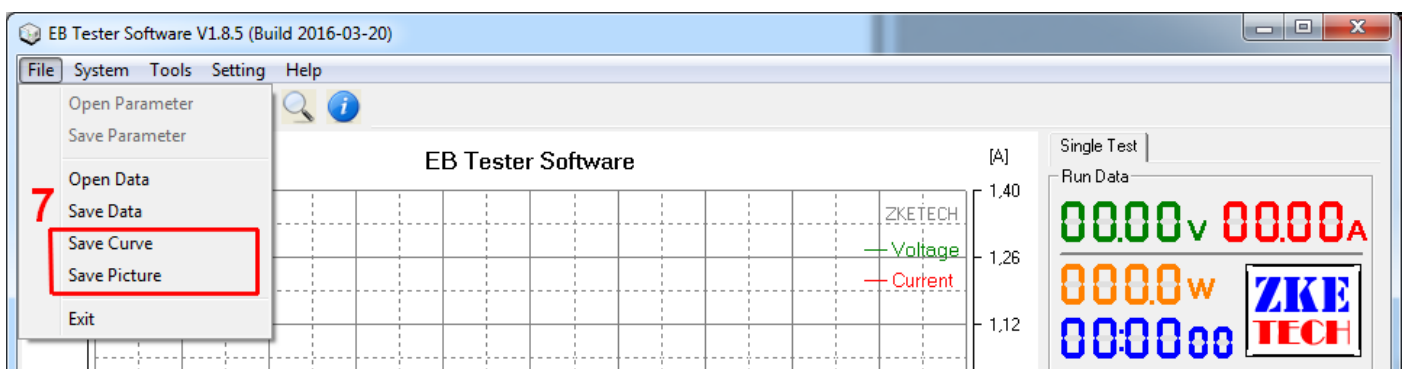
If possible, update the hardware firmware for this function, and expand the PC software functionality.



(4. picture)

List of errors in the fifth picture

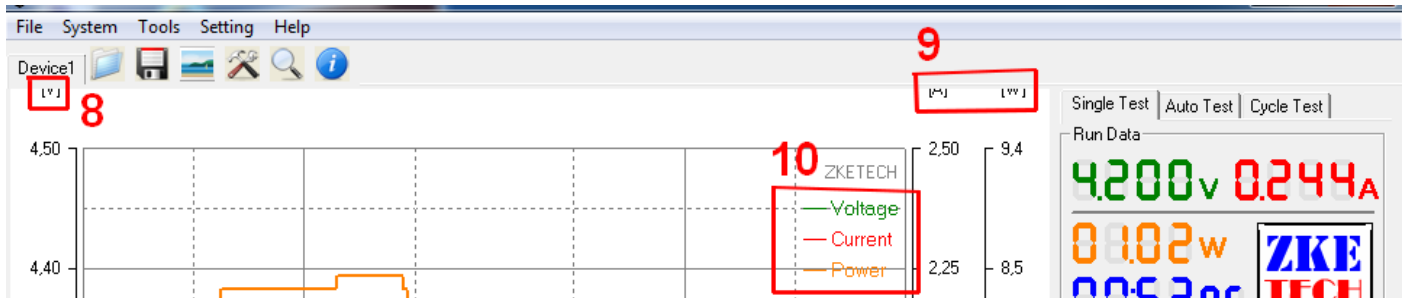
- The curve and image is saved only in ***.BMP** format, which occupies a large space.
If possible, the program will save the ***.PNG** image format.
An image saved in ***.BMP** format (FullHD mode 1920x1080 pixel) more than 4 Mb.
Same converting images to ***.PNG** format, smaller than 100 Kb.



(5. picture)

List of errors in the sixth picture

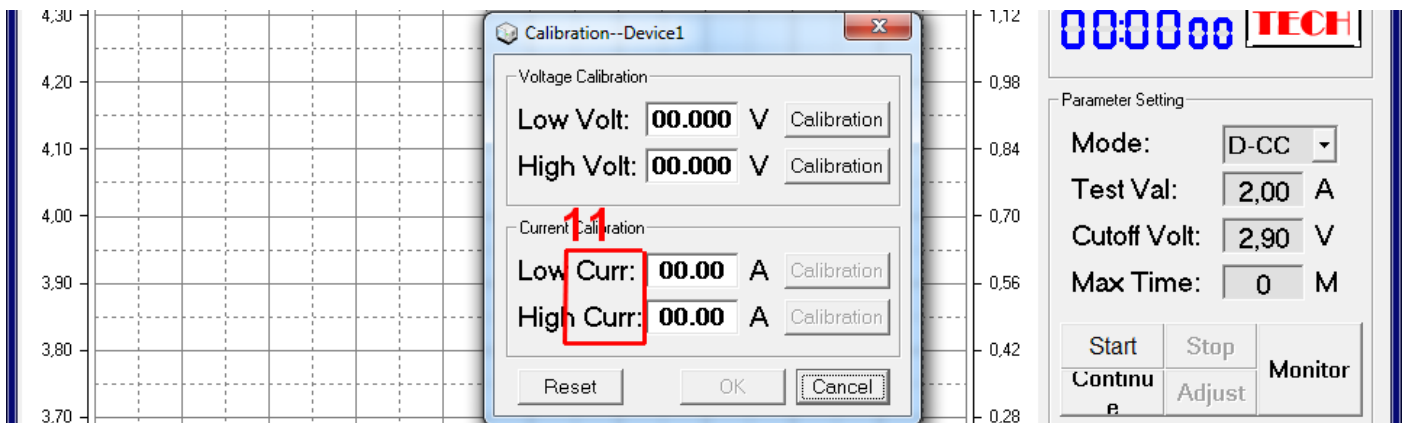
- After increasing the height of the window or full-screen mode, the graph markers "V" sticking out of the window. Please fix it.
- After increasing the height of the window or full-screen mode, the graph markers "A" and "W" sticking out of the window. Please fix it.
- The graph lines interfere with the "Voltage" and "Current" and "Power" text readability. The text are moving to a position where it is not about lines.



(6. picture)

List of errors in the seventh picture

- System menu, Calibration parameters window, the end of the "Curr" is lagging behind. Please replace "Current" text, and resize the actual window.

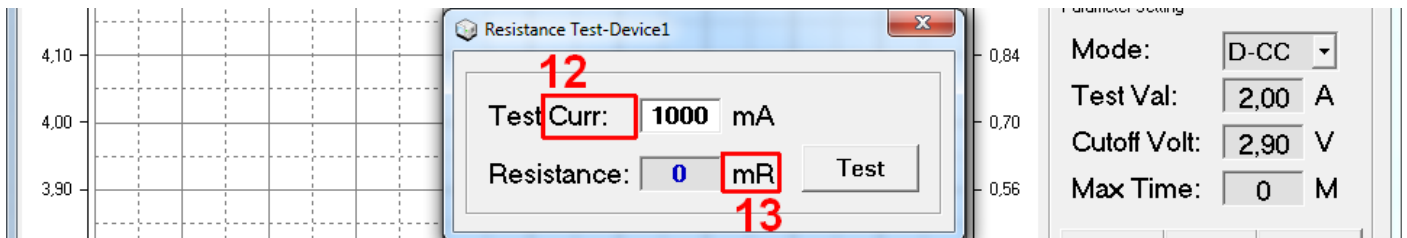


(7. picture)

List of errors in the eighth picture

12. Tools menu, Resistance Test window, the end of the "Curr" is lagging behind.
Please replace "Current" text.

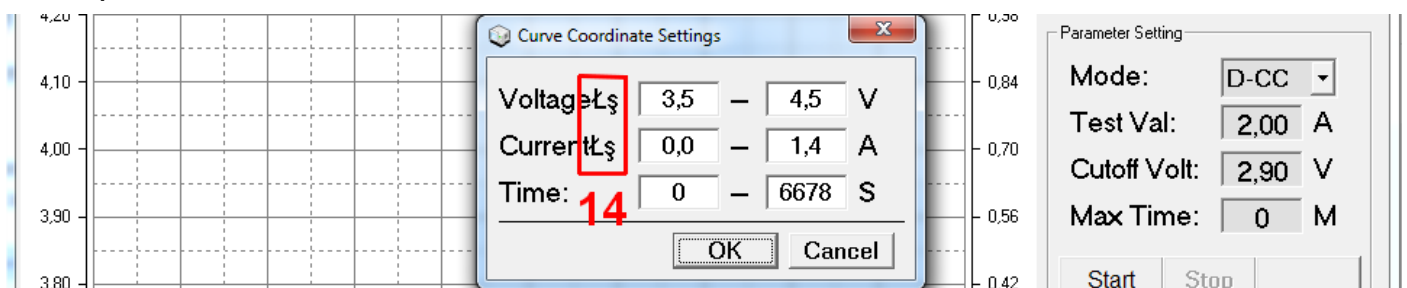
13. The resistance "mR" wrong unit of measure. Omega write correctly.
The milliohms correct unit of measure called "mΩ", please replace.



(8. picture)

List of errors in the ninth picture

14. Setting menu, Coordinate Settings window, "Voltage" and "Current" after the words are meaningless characters.
Please replace the meaningless characters to colon character.



(9. picture)

List of errors in the tenth picture

15. Setting menu, Display Settings window, "Bg" text is misinterpreted.
Please replace the text "Background", and resize the actual window.

16. The "Axes" text is misinterpreted. Please replace the text "Axis"

17. After the "Power" text is missing the colon character.
Or it is not shown, because the color object is blocked. Please fix it.

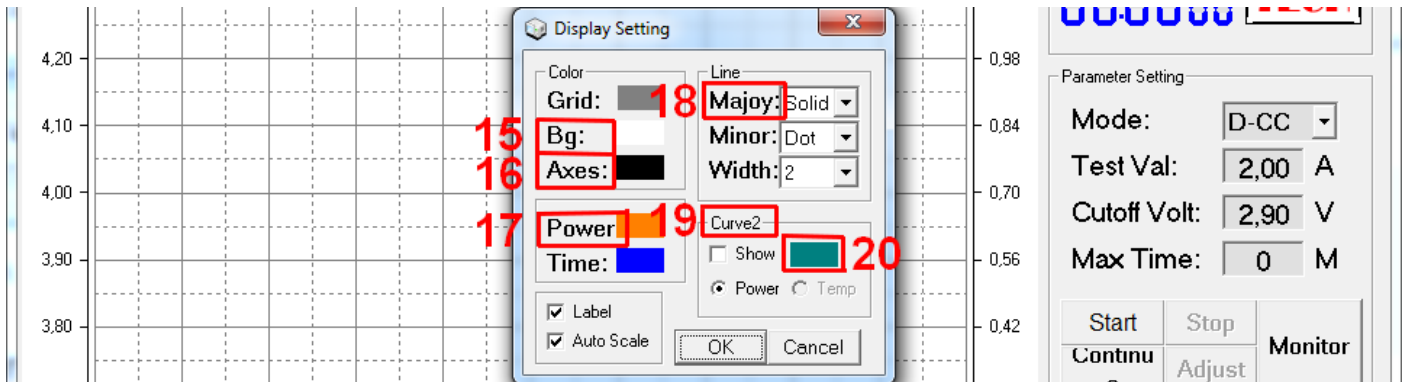
18. The "Majoy" text is misspelled. Correctly written, "Major", please replace.

19. The text "Curve2" is misleading.

A more precise term such as "Power curve" or "Third Curve".

20. If you change the "Power curve" color, and closes the window, the color changes.

But if I open this window again, the "Power curve" returns to its default color green. If you enable the "Power curve" display of the curve displayed in the graph. If the program is closed and restarted, the "Power curve" does not appear. It must be enabled again. The program does not remember the settings.



(10. picture)

List of errors in the eleventh picture

21. The cells do not have the name of your values.

Suggested names instead of the use of the marking.

Instead of "Curr (A)" using "I (A)",

instead of "Voltage (V)" using "U (V)",

instead of "Pwr (W)" using "P (W)".

Or write the correct name,

and increase the cell width to fit into text.

22. The "Start Curr:" and "Stop Curr:" end of text missing.

Please change the text "Start current:" and "Stop current:"

23. After missing the name "Cutoff" text, and colon character.

Please change the text "Cutoff voltage:"

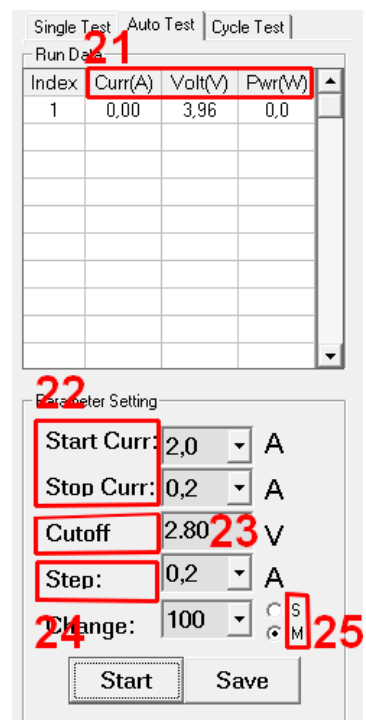
24. The "Step:" text font lower leg "p" is not visible. Please fix it.

25. The unit of time is marked correctly lowercase.

Please "S" and "M" to exchange letters "s" and "m" letter.

*The above picture shows the values of the test starts,

but stops and can not run.



(11. picture)

Missing of extra features:

When the unit completed a feature, not beeps. I wish you every charging, discharging, measurement is complete, it would give a warning signal via the built-in PC speakers.

Some are very warm during battery charging or discharging. The device can not be connected to the external temperature sensors. It would need an external temperature sensor accession. The program is through an external thermometer sensor to measure the temperature of the cell, draw the graph if you please. And to set a maximum temperature, which you can reach the cell to stop running services. Then, when it reaches a set temperature, go to the service. The two can be manually adjusted temperature value.

Supplement (2017.09.22)

In the new version of the program V1.8.5 (Build 2017-06-05), the above listed errors still exist.