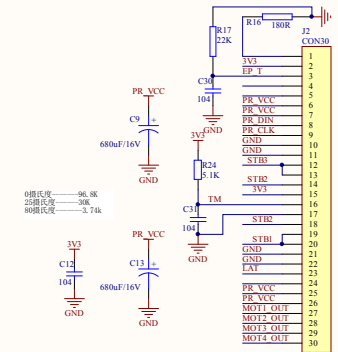
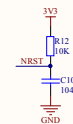


**DC/DC**

**ISP**

**JTAG**

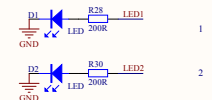
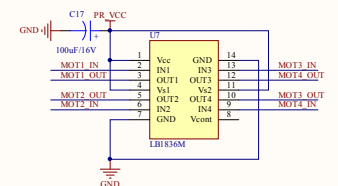
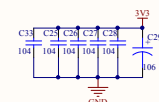


3V3

## UART

**FLASH**

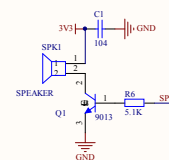
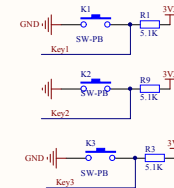
STM32F103RCT6



USB UART(TTL)

LCD12864

STM32 USB



Title			
Size A2	Number		Revision
Date: 2014/6/17	Sheet of		
File: FA	UDFV Print Sch	Drawn By	

Comment	Description	Designator	Footprint	LibRef	Quantity
104	Capacitor	C1, C5, C6, C8, C10, C11, C12, C14, C18, C22, C24, C25, C26, C27, C28, C30, C31, C32, C33	RC0603	CAP	19
106	Capacitor	C2, C29	RC0805	CAP, CAPACITOR POL	2
103	Capacitor	C3	RC0603	CAP	1
680uF/ 16V		C4	SMT-680uF	CC	1
220uF/ 35V		C7	SMT-680uF	CC	1
680uF/ 16V	Capacitor	C9, C13	PR_SMD100	CAPACITOR POL	2
15P		C15, C16	RC0603	CAP	2
100uF/ 16V	Capacitor	C17	PR_SMD100	CAPACITOR POL	1
22P	Capacitor	C19, C20	RC0603	CAP	2
10uF/ 6.3V	Capacitor	C21, C23	RC0805	CAP	2
LED		D1, D2, D3, D6, D7	LED0805	LED	5
MBRS340T3		D4	MBRS340T	MBRS340T3	1
12V/ 3A		J1	PowerJ	POWER_IN	1
CON30	Connector	J2	PR_FM205	CON30	1
Header 10X2	Header, 10-Pin, Dual row	J3	IDE20	Header 10X2	1
ISP状态	Header, 3-Pin	J4	SIP3	Header 3	1
micro-USB	Header, 5-Pin	J5, J6	Micro_USB	Header 5	2
Header 3X2	Header, 3-Pin, Dual row	J7, J9	IDE6	Header 3X2	2
LCD12864	Header, 8-Pin	J8	SIP8	Header 8	1
SW-PB		K1, K2, K3	SMT-KEY	SW-PB	3
15uH/ 3A		L2	SMTLL	L	1
9013	NPN General Purpose Amplifier	Q1	SMT-NPN	2N3904	1
10K	Resistor	R1, R3, R9, R10, R11, R12, R13, R15, R18, R24, R36	RC0603	Res2	11
57.6K/ 1%		R2	RC0603	R	1
200R	Resistor	R4, R7, R28, R30	RC0603	Res2	4
2K/ 1%		R5	RC0603	R	1
5.1K	Resistor	R6, R25, R26	RC0603	Res2	3
10K/ 1%		R8	RC0603	R	1
1M	Resistor	R14	RC0603	Res2	1
180R		R16	RC0603	RES2	1
22K		R17	RC0603	RES2	1
22R	Resistor	R19, R20, R48, R49	RC0603	Res2	4
SW SPDT		S1	PowerKEY	SW SPDT	1
SPEAKER		SPK1	PR_SPK	SPEAKER	1
TPS5430		U1	SOP8-RP	TPS5450	1
STM32F103RCT6		U2	LQFP64	STM32F103R8T6	1
ASM1117-3.3		U3	PR_ASM1117	REG1117	1
CP2102		U5	QFN28	CP2102	1
LB1836M		U7	PR_LB1836M	LB1836M	1
W25X32V		U8	PR_45DB321	W25X32V	1
32.768K	晶振	Y1	JZ32K	CRYSTAL	1
8M	Crystal	Y2	JZ49S	CRYSTAL	1