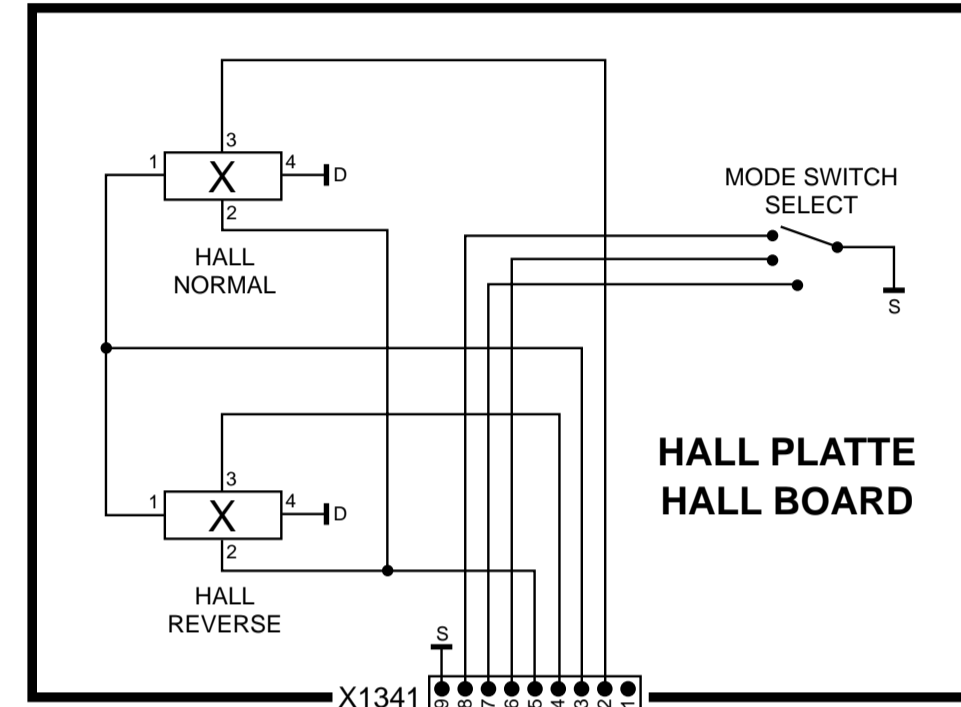


ADC 1400
 BOSTON RCR 128 (E)
 DRESDEN RCR 128 (D)
 FREIBURG RCM 148 (D)

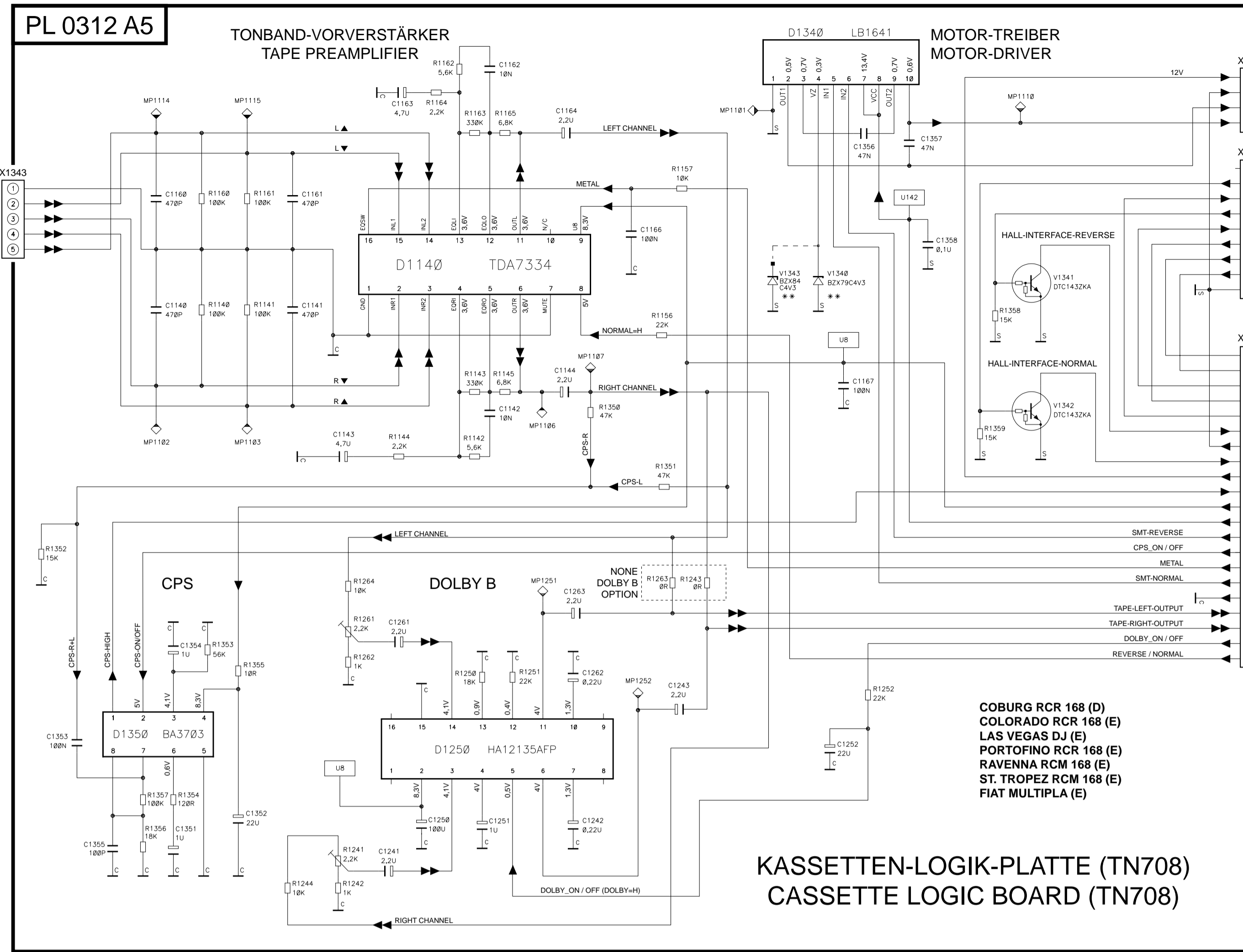
TN 705
 KINGSTON DJ (D)
 LOUISIANA RCM 148 (E)
 SIENA RCM 148 (E)
 ST. LOUIS DJ (E)



COBURG RCR 168 (D)
COLORADO RCR 168 (E)
LAS VEGAS DJ (E)
PORTOFINO RCR 168 (E)
RAVENNA RCM 168 (E)
ST. TROPEZ RCM 168 (E)
FIAT MULTIPLA (E)

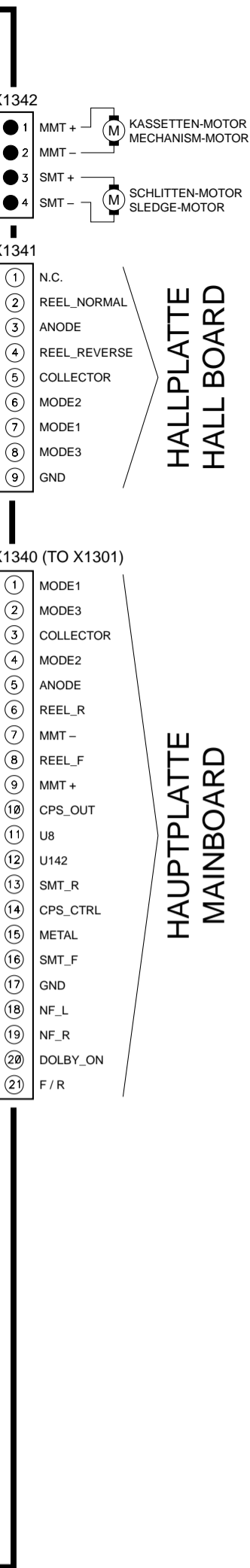
HALL SENSOR

KASSETTEN-LOGIK-PLATTE
CASSETTE LOGIC BOARD



COBURG RCR 168 (D)
COLORADO RCR 168 (E)
LAS VEGAS DJ (E)
PORTOFINO RCR 168 (E)
RAVENNA RCM 168 (E)
ST. TROPEZ RCM 168 (E)
FIAT MULTIPLA (E)

KASSETTEN-LOGIK-PLATTE (TN708)
CASSETTE LOGIC BOARD (TN708)



Logik-Platte
Logic board
PL 0312 A05
Chip

Logik-Platte
Logic board
PL 0312 A05

X1343
(TAPE HEAD)

X1340 (TO X1301)

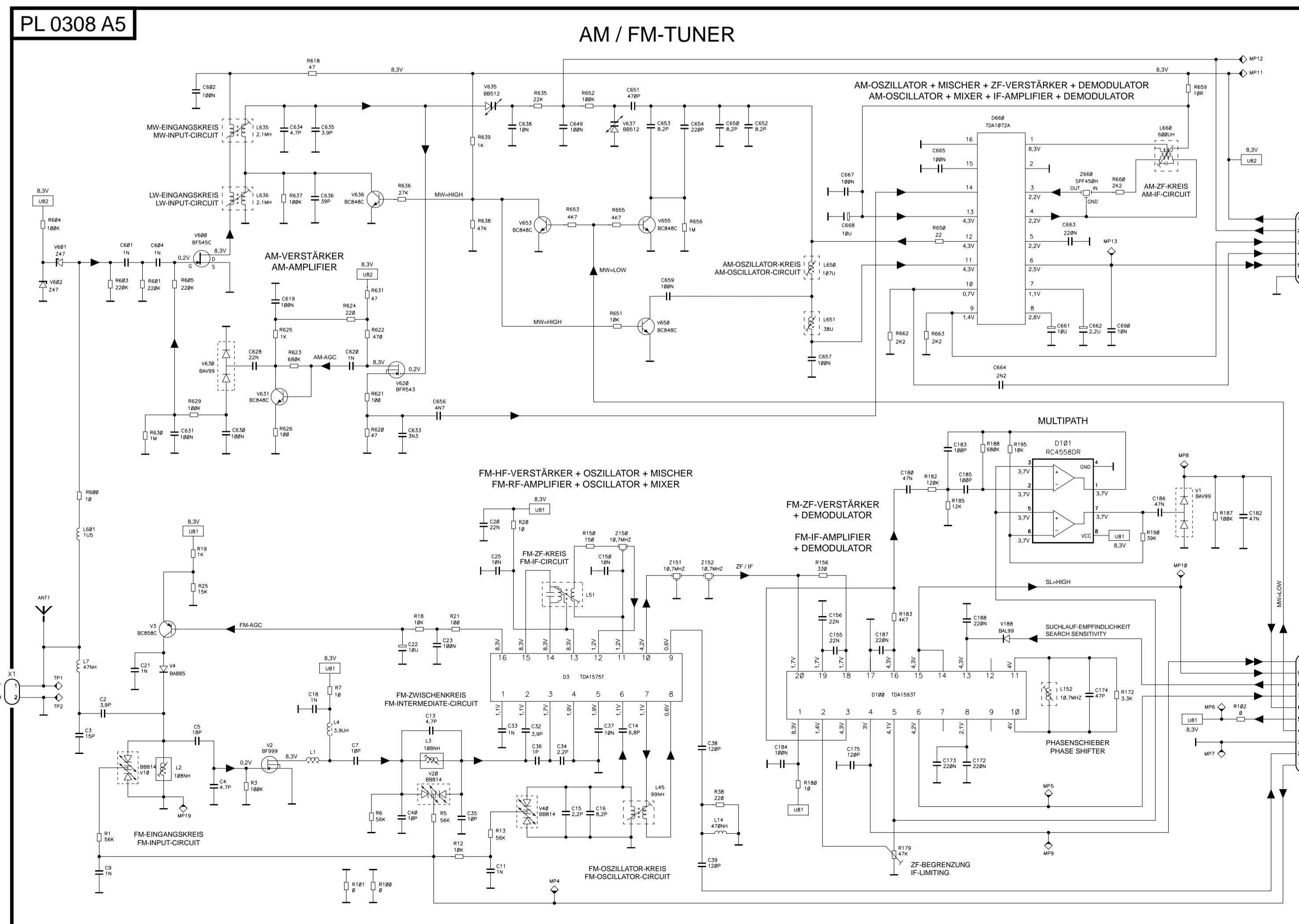
| | |
|---------------|---------------|
| 1 = GND | 12 = U142 |
| 2 = MODE3 | 13 = SMT_R |
| 3 = COLLECTOR | 14 = CPS_CTRL |
| 4 = MODE2 | 15 = METAL |
| 5 = ANODE | 16 = SMT_F |
| 6 = REEL_R | 17 = GND |
| 7 = MMT- | 18 = NF_L |
| 8 = REEL_F | 19 = NF_R |
| 9 = MMT+ | 20 = DOLBY_ON |
| 10 = CPS_OUT | 21 = F/R |
| 11 = U8 | |

X1341
(HALL BOARD)

| | |
|---------------|---------------|
| 1 = N.C. | 6 = MODE2 |
| 2 = REEL_NORM | 7 = REEL_REV |
| 3 = ANODE | 8 = COLLECTOR |
| 4 = REEL_NORM | |
| 5 = REEL_REV | |
| 6 = MODE2 | |
| 7 = MODE1 | |
| 8 = MODE3 | |
| 9 = GND | |

X1342
(MOTOR)

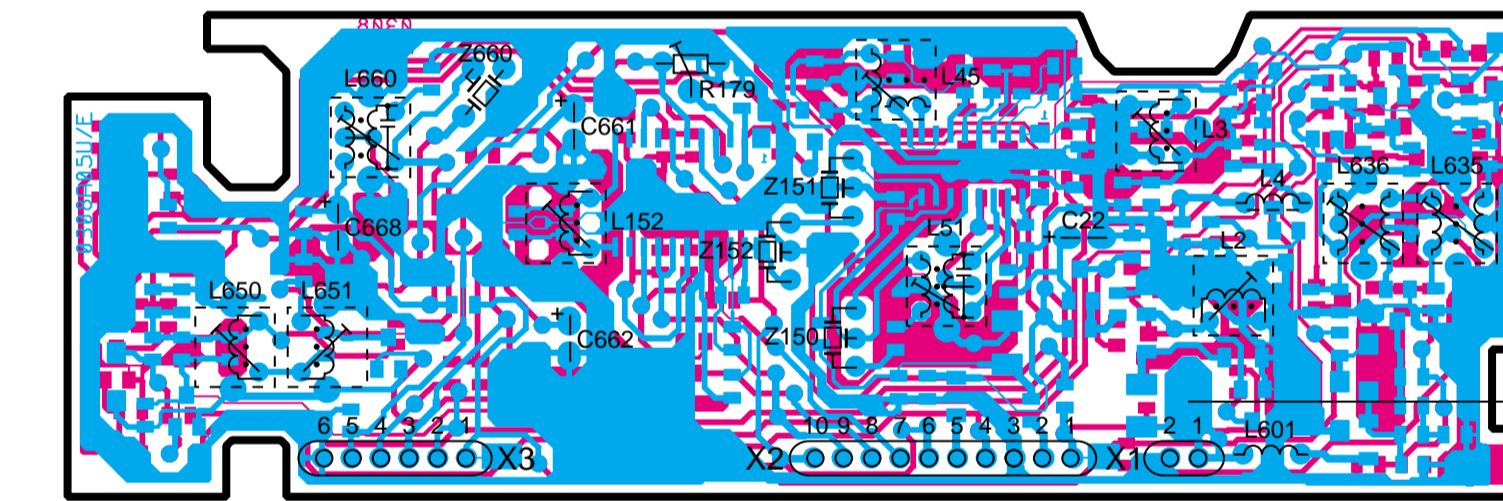
| |
|----------|
| 1 = MMT- |
| 2 = MMT+ |
| 3 = SMT- |
| 4 = SMT+ |



AM / FM Tuner
PL 0308 A05
Chip

AM / FM Tuner
PL 0308 A05
Chip

AM / FM Tuner
PL 0308 A05
Chip



X3

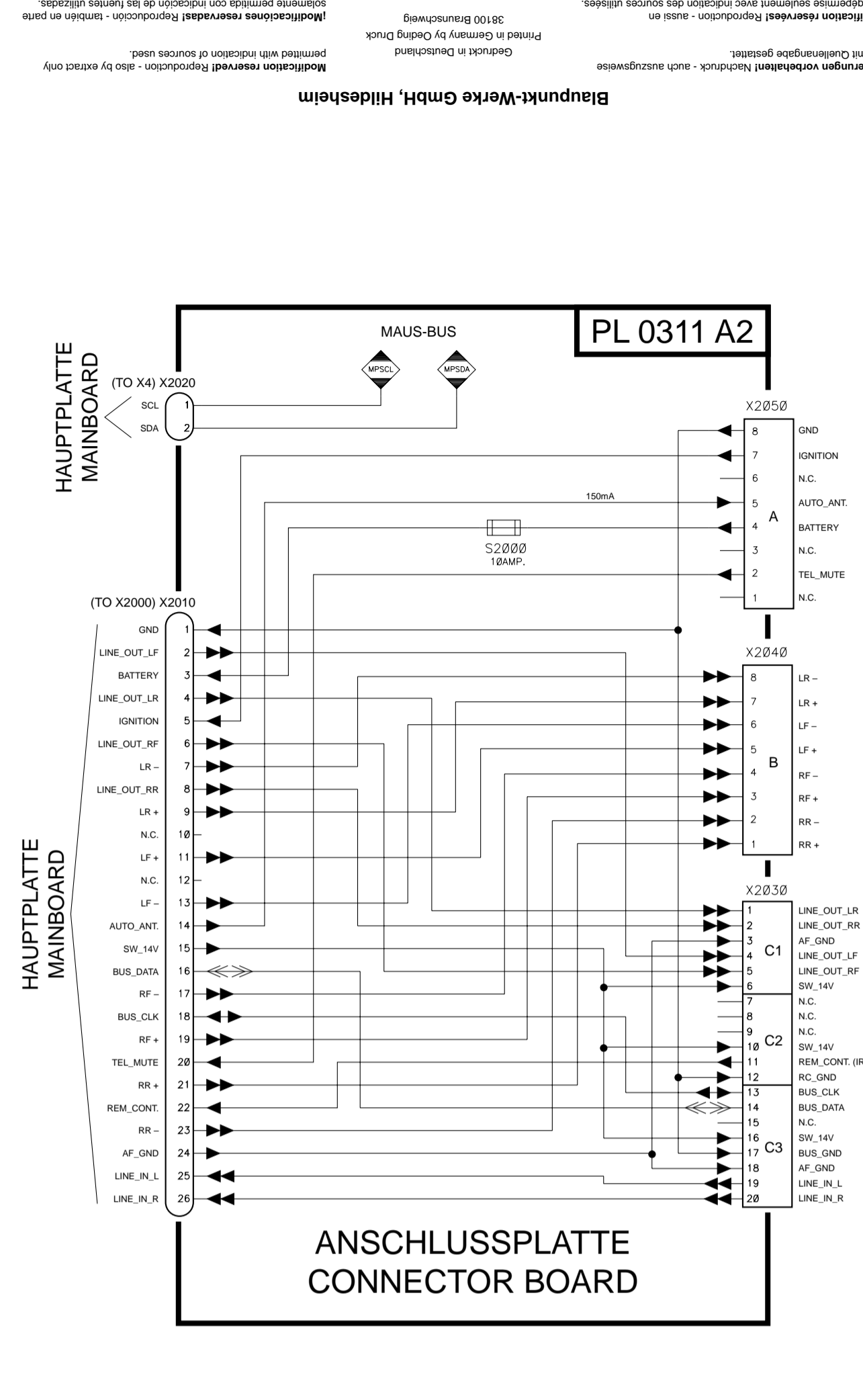
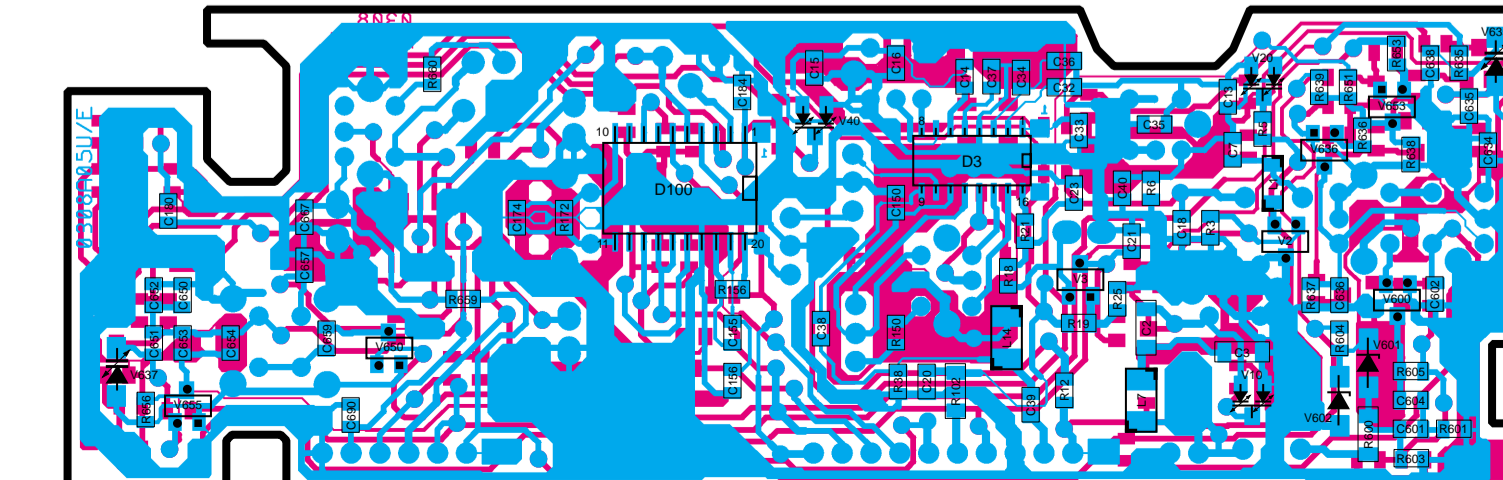
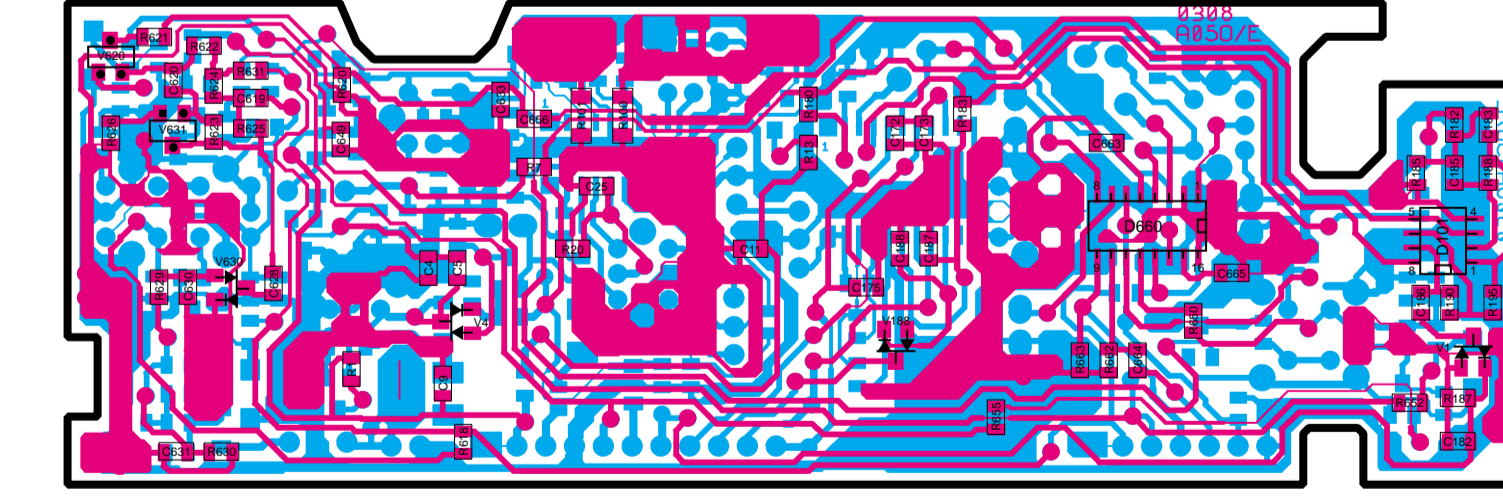
| | |
|------------|---------|
| 1 = UB2 | 6 = GND |
| 2 = AU_AM | |
| 3 = FS_AM | |
| 4 = AM_OSC | |
| 5 = AM_NF | |
| 6 = GND | |

X2

| | |
|------------|---------------|
| 1 = AU_FM | 6 = MULTIPATH |
| 2 = AU_OSC | 7 = FS_FM |
| 3 = GND | 8 = SLF |
| 4 = AM_OSC | 9 = SL_STOP |
| 5 = UB1 | 10 = MPX |

X1

| |
|---------|
| 1 = ANT |
| 2 = GND |



BLAUPUNKT **AUTORADIO**

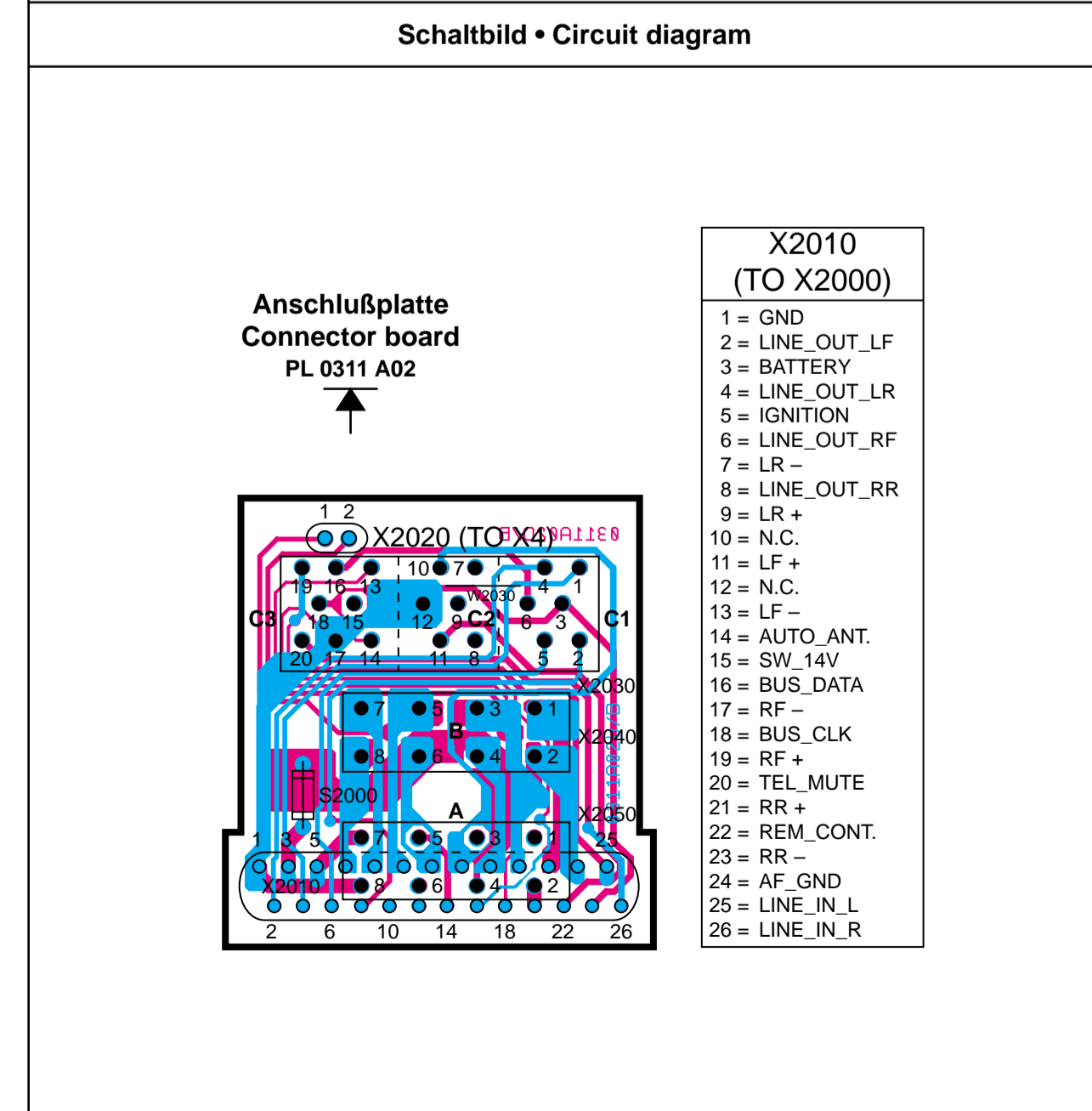
| | | |
|--|--|---|
| Boston RCR 128 7 648 505 310 | Coburg RCR 168 7 648 517 310 | Colorado RCR 168 7 648 522 310 |
| Dresden RCR 128 7 648 501 310 | Freiburg RCM 148 7 648 509 310 | Louisiana RCM 148 7 648 515 510 |
| Portofino RCR 168 7 648 521 310 | Ravenna RCM 168 7 648 533 510 | Siena RCM 148 7 648 513 310 |
| St. Tropez RCM 168 7 648 529 510 | Fiat Multipla 7 648 371 510 | |

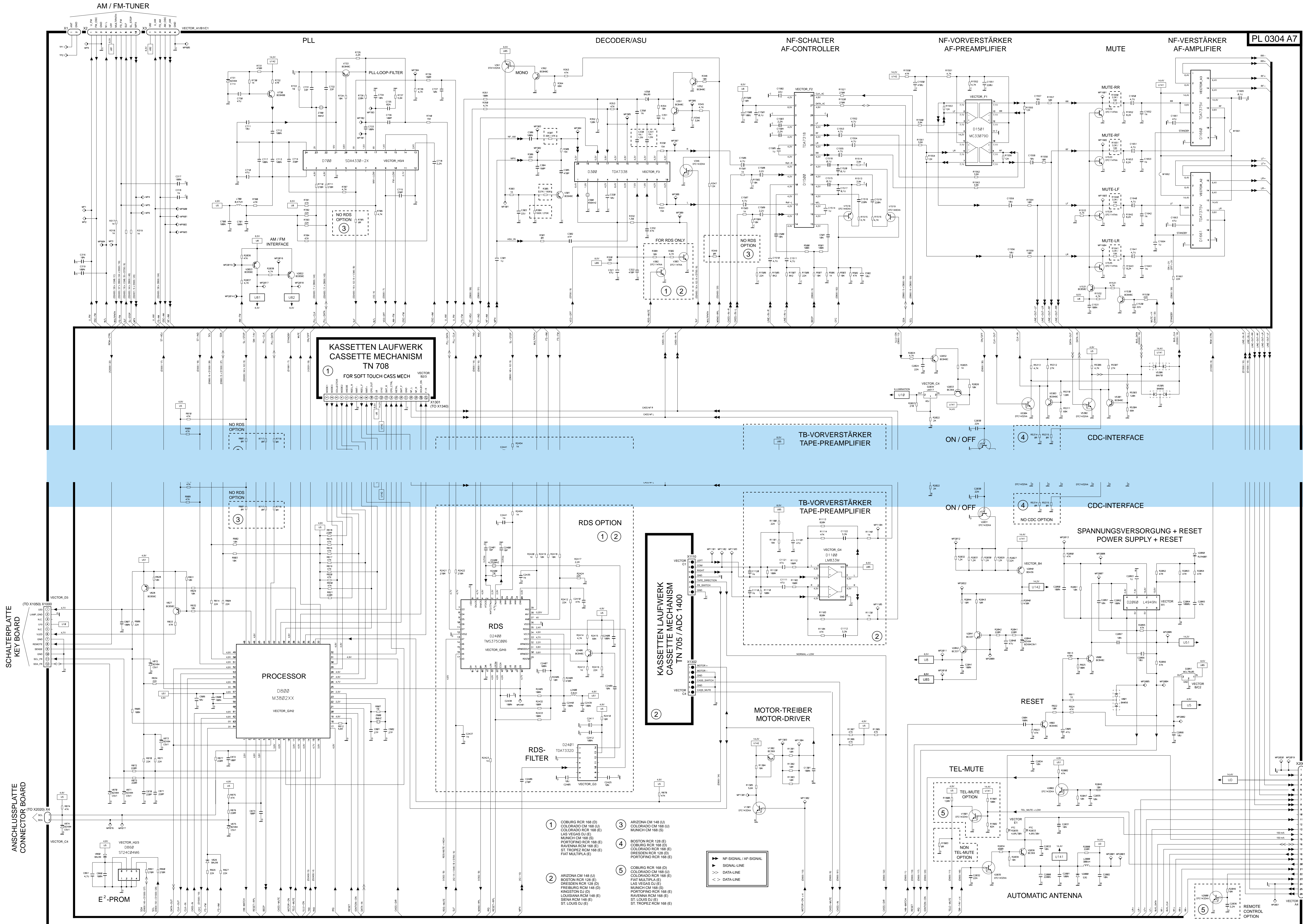
Kingston DJ
7 648 510 510
7 648 909 319

St. Louis DJ
7 648 514 510
7 648 912 319

Las Vegas DJ
7 648 530 510
7 648 929 319

8 622 402 714 BN-ST 11/00 SB





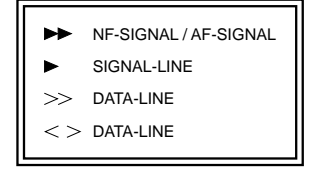
SCHALTERPLATTE
KEY BOARD

ANSCHLUSSPLATTE
CONNECTOR BOARD

PL 0304 A7

Hauptplatte / Main board A07

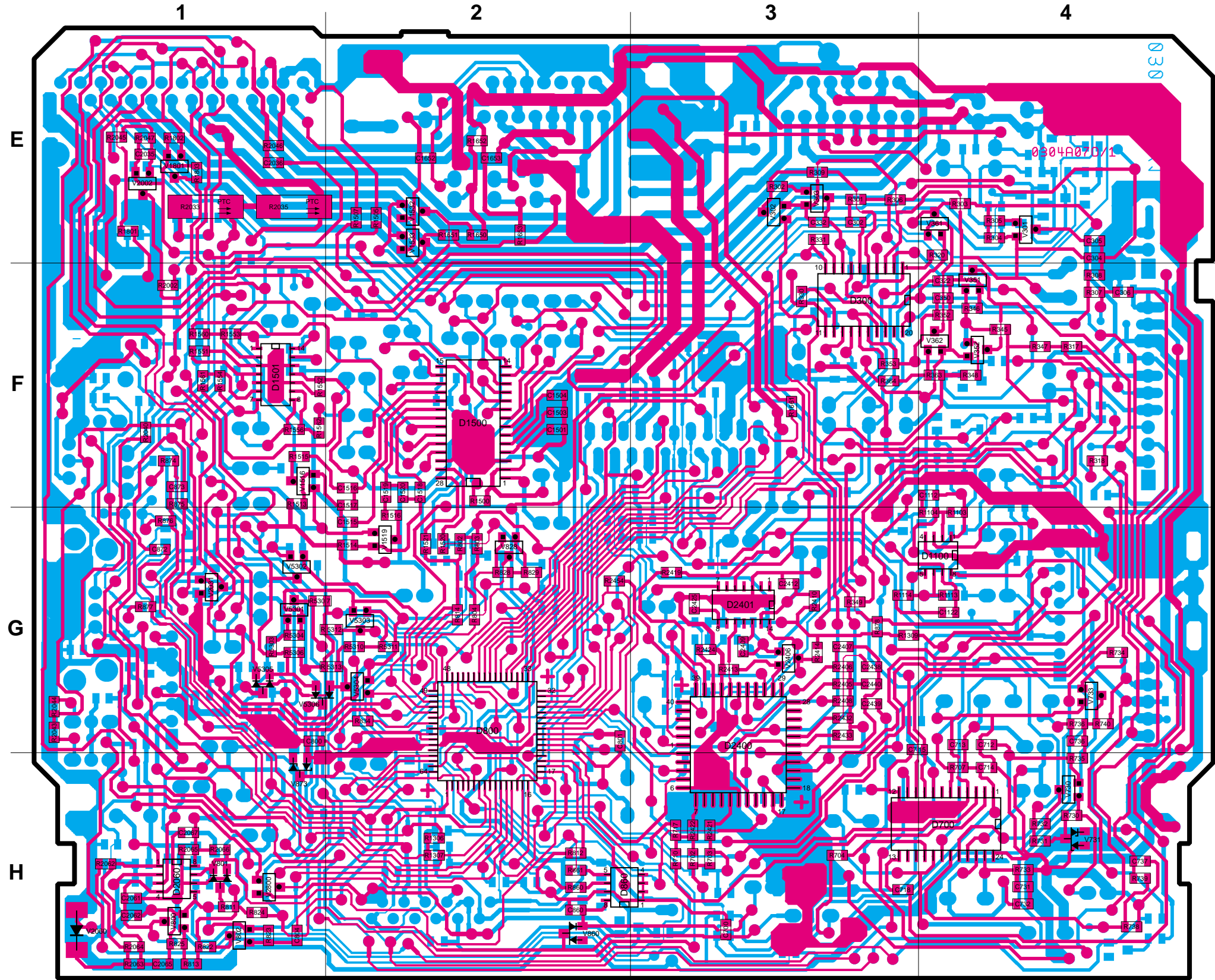
- ① COBURG RCR 168 (D)
COLORADO CM 168 (U)
COLORADO RCR 168 (E)
LAS VEGAS DU (E)
MÜNCHEN CM 168 (E)
PORTOFINO RCR 168 (E)
RAVENNA RCR 168 (E)
ST. TROPEZ RCR 168 (E)
FAT MULTIPLEX (E)
- ② ARIZONA CM 148 (U)
BOSTON RCR 128 (E)
DRESDEN RCR 128 (E)
FREIBURG RCR 148 (E)
KINGSTON DU (E)
LOUISIANA RCR 168 (E)
SARAJEVO RCR 168 (E)
ST. LOUIS DU (E)
- ③ ARIZONA CM 148 (U)
COLORADO CM 168 (U)
MÜNCHEN CM 168 (E)
- ④ BOSTON RCR 128 (E)
COLORADO RCR 168 (U)
COLORADO RCR 168 (E)
DRESDEN RCR 128 (E)
LAS VEGAS DU (E)
MÜNCHEN CM 168 (E)
PORTOFINO RCR 168 (E)
RAVENNA RCR 168 (E)
ST. TROPEZ RCR 168 (E)
- ⑤ COBURG RCR 168 (D)
COLORADO CM 168 (U)
BOSTON RCR 128 (E)
COLORADO RCR 168 (E)
DRESDEN RCR 128 (E)
LAS VEGAS DU (E)
MÜNCHEN CM 168 (E)
PORTOFINO RCR 168 (E)
RAVENNA RCR 168 (E)
ST. LOUIS DU (E)



ANSCHLUSSPLATTE
CONNECTOR BOARD

Hauptplatte
Main board
PL 0304 A07
Chip
↓

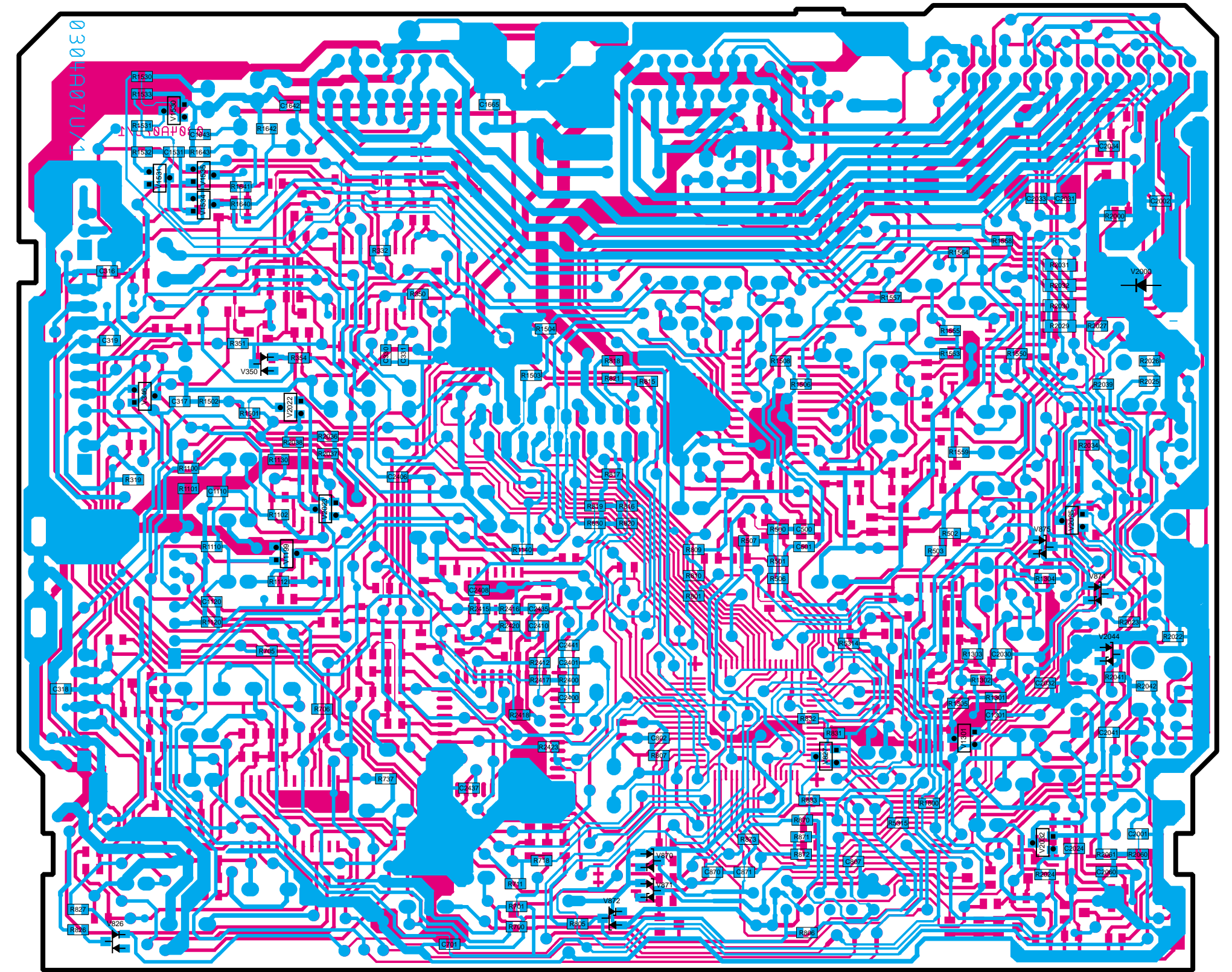
| | | | |
|-------|-------|-------------|-------------|
| BC848 | BC848 | DTC143ZKA | DTC144EKA |
| V301 | V802 | V301 | V1516 |
| V351 | V2406 | V1801 | V1519 |
| V352 | V5301 | V2002 | |
| V362 | V5303 | V2031 | DTC114TKA |
| V790 | V2900 | V302 / V303 | V302 / V303 |
| V733 | BC858 | V5302 | V1532 |
| V800 | V828 | V5304 | V1533 |



A07

Hauptplatte
Main board
PL 0304 A07
Chip
↑

| | | | |
|-------|-------|---------------|-----------|
| BC848 | BC858 | DTC114TKA | DTC143ZKA |
| V1530 | V827 | V1534 / V1535 | V146 |
| V2032 | V1531 | V2022 | V1301 |
| | V2023 | DTC144EK | V2035 |
| | | V1199 | |



A07

Hauptplatte
Main board
PL 0304 A07

| X1000 (TO X1050) | | | |
|------------------|----------|------------|-------------|
| 1 = U53 | 4 = U10 | 7 = GND | 10 = GND |
| 2 = LAMP_GND | 5 = N.C. | 8 = REMOTE | 11 = SCL_FR |
| 3 = N.C. | 6 = VLED | 9 = SENSE | 12 = SDA_FR |

| X1 |
|---------|
| 1 = ANT |
| 2 = GND |

| X2 |
|---------------|
| 1 = ΔU_FM |
| 2 = FM_OSC |
| 3 = GND |
| 4 = M / L |
| 5 = U81 |
| 6 = MULTIPATH |
| 7 = FS_FM |
| 8 = SLF |
| 9 = SL_STOP |
| 10 = MPX |

| X3 |
|------------|
| 1 = U82 |
| 2 = ΔU_AM |
| 3 = FS_AM |
| 4 = AM_OSC |
| 5 = AM_NF |
| 6 = GND |

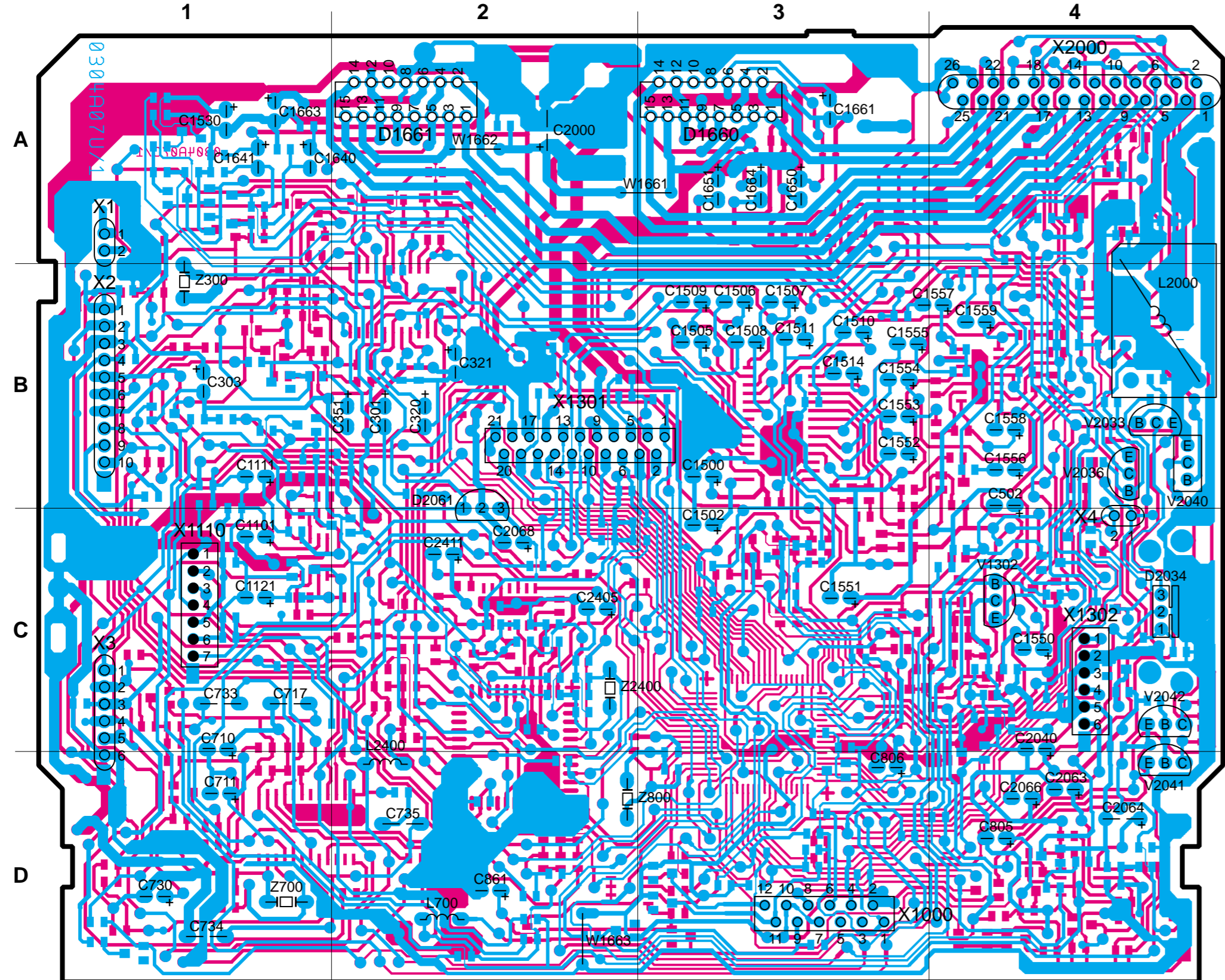
| X1301 (TO X1340) |
|------------------|
| 1 = MODE1 |
| 2 = MODE3 |
| 3 = COLLECTOR |
| 4 = MODE2 |
| 5 = ANODE |
| 6 = REEL_R |
| 7 = MMT- |
| 8 = REEL_F |
| 9 = MMT+ |
| 10 = CPS_OUT |
| 11 = U8 |
| 12 = U142 |
| 13 = SMT_R |
| 14 = CPS_CTRL |
| 15 = METAL |
| 16 = SMT_F |
| 17 = GND |
| 18 = NF_L |
| 19 = NF_R |
| 20 = DOLBY_ON |
| 21 = F / R |

| X2000 (TO X2010) |
|------------------|
| 1 = GND |
| 2 = LINE_OUT_LF |
| 3 = BATTERY |
| 4 = LINE_OUT_LR |
| 5 = IGNITION |
| 6 = LINE_OUT_RF |
| 7 = LR - |
| 8 = LINE_OUT_RR |
| 9 = LR + |
| 10 = N.C. |
| 11 = LF + |
| 12 = N.C. |
| 13 = LF - |
| 14 = AUTO_ANT. |
| 15 = SW_14V |
| 16 = BUS_DATA |
| 17 = RF - |
| 18 = BUS_CLK |
| 19 = RF + |
| 20 = TEL_MUTE |
| 21 = RR + |
| 22 = REM_CONT. |
| 23 = RR - |
| 24 = AF_GND |
| 25 = LINE_IN_L |
| 26 = LINE_IN_R |

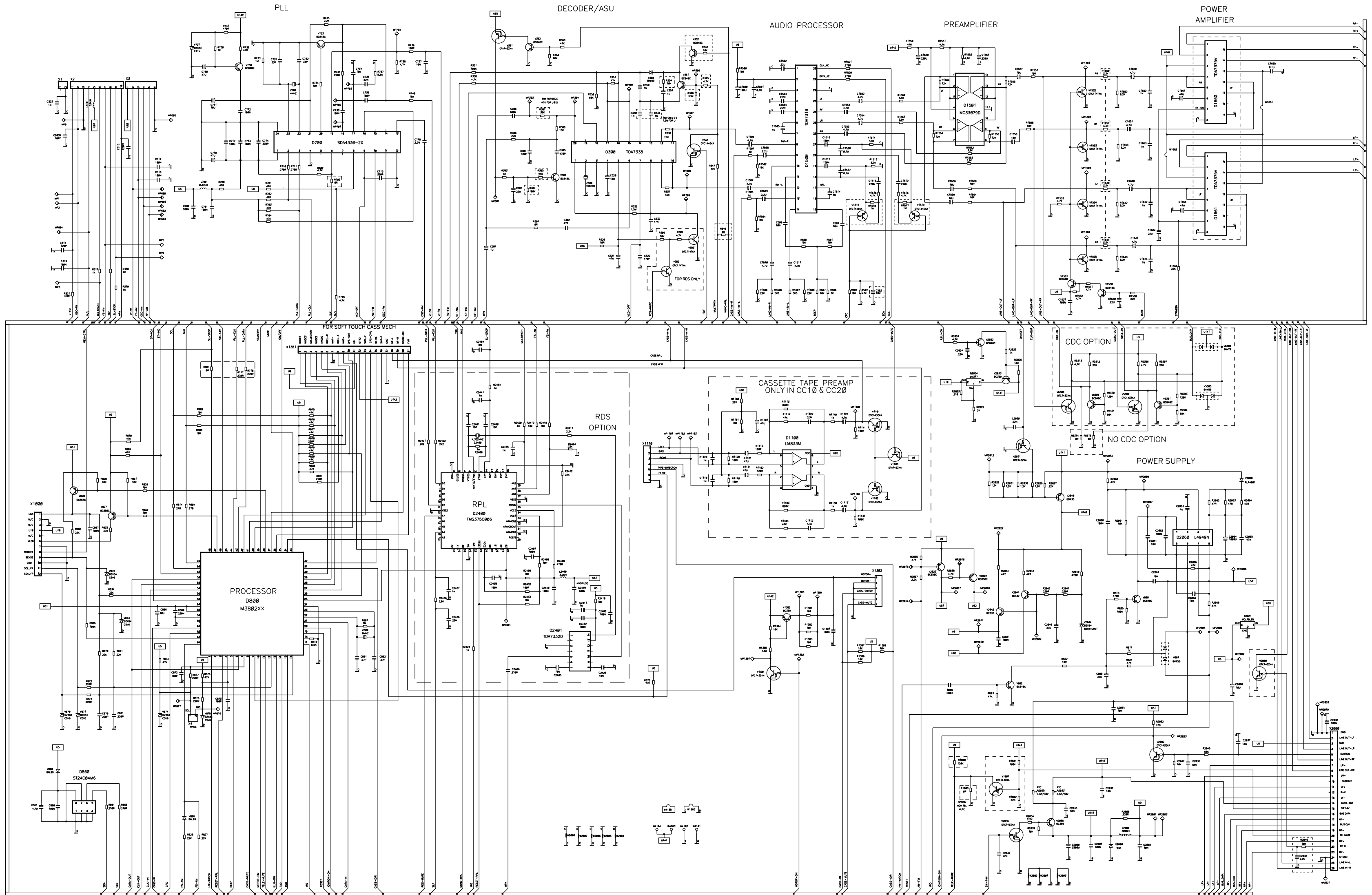
| X4 (TO X2020) |
|---------------|
| 1 = SCL |
| 2 = SDA |

| X1302 |
|-----------------|
| 1 = MOTOR + |
| 2 = MOTOR - |
| 3 = GND |
| 4 = CASS_SWITCH |
| 5 = GND |
| 6 = CASS_MUTE |

| X1110 |
|---------------|
| 1 = GND |
| 2 = FR_SWITCH |
| 3 = TAPE_DIR |
| 4 = GND |
| 5 = RIGHT |
| 6 = COM |
| 7 = LEFT |

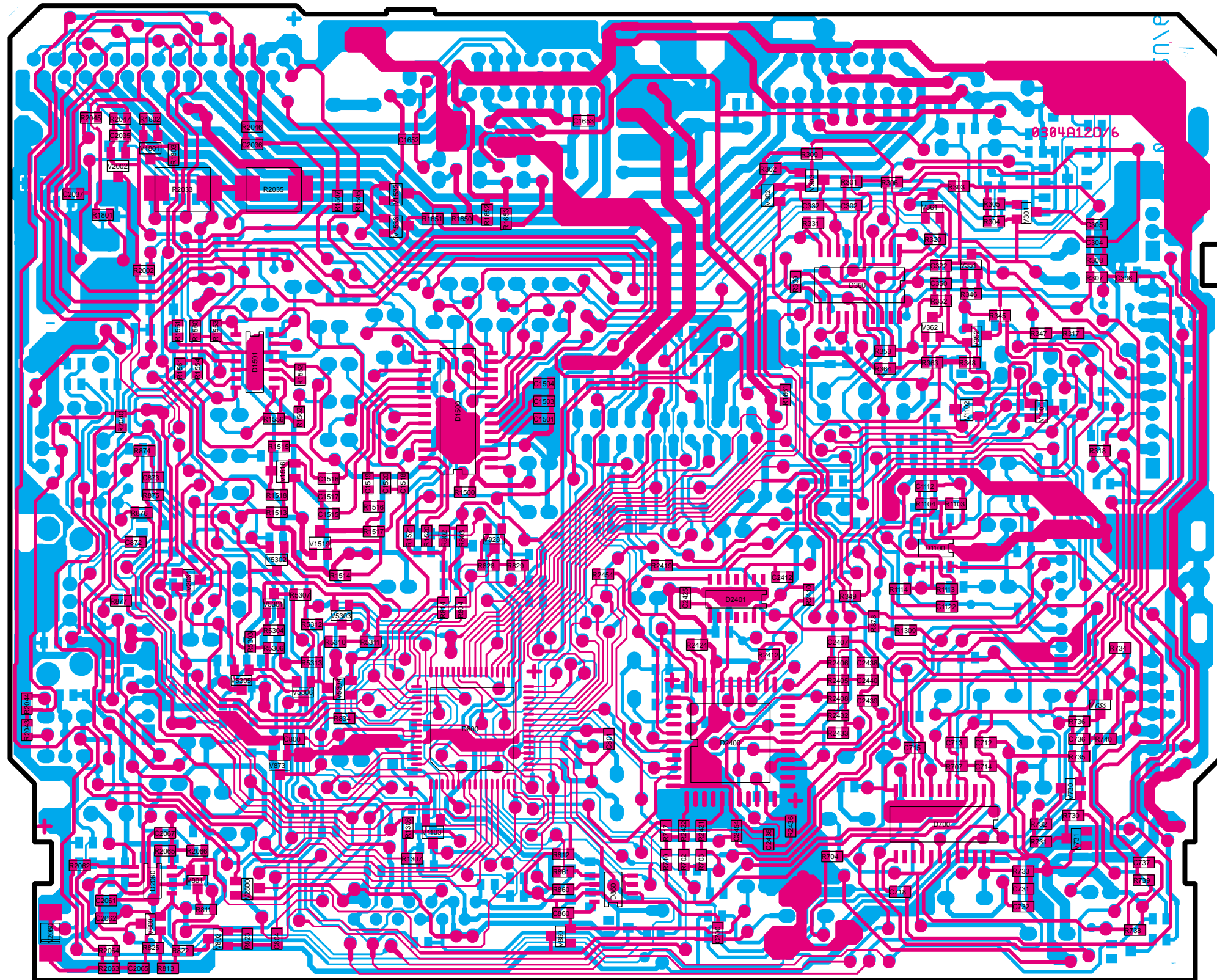


| PL 0304 A7 | R304 | R305 | R307 | R5314 / OR R5315 / OR | R349 / OR R705 / OR R717 / OR R718 / OR R801 / OR | R1640 R1641 R1650 R1651 | C330 C331 | R2046 / 10K C2036 / 2,2N V2800 / DTC143ZKA | R1800 / 120K R1801 / 100K R1802 / 82K V1801 / DTC143ZKA | R1803 / OR | D1660 D1661 |
|--|------|------|------|--------------------------|---|----------------------------------|--------------|---|---|--------------------------|----------------|
| | | | | NO CDC OPTION | NO RDS OPTION | | | REMOTE CONTROL OPTION | TEL MUTE OPTION | NO TEL MUTE OPTION | |
| BOSTON RCR 128 (E) DRESDEN RCR 128 (D) | 180K | 27K | 39K | * | | 3,3K | 1NF | | | 1NF | TDA7375A |
| FREIBURG RCM 148 (D) KINGSTON DJ (D) LOUISIANA RCM 148 (E) SIENA RCM 148 (E) | 180K | 27K | 39K | | | 3,3K | 1NF | | | 1NF | TDA7375A |
| ARIZONA CM 148 (U) | 270K | 180K | 47K | | * | 10K | 1,5NF | | | 1,5NF | TDA7375A |
| COBURG RCR 168 (D) COLORADO RCR 168 (E) PORTOFINO RCR 168 (E) | 180K | 27K | 39K | * | | 3,3K | 1NF | * | * | | TDA7375A |
| LAS VEGAS DJ (E) FIAT MULTIPLA (E) RAVENNA RCM 168 (E) ST. LOUIS DJ (E) ST. TROPEZ RCM 168 (E) | 180K | 27K | 39K | | | 3,3K | 1NF | * | * | | TDA7375A |
| COLORADO CM 168 (U) | 270K | 180K | 47K | | * | 10K | 1,5NF | * | * | | TDA7375A |
| MUNICH CM 168 (S) | 270K | 180K | 47K | | * | 10K | 1NF | * | * | | TDA7375A |



Hauptplatte
Main board
PL 0304 A12
Chip
↓

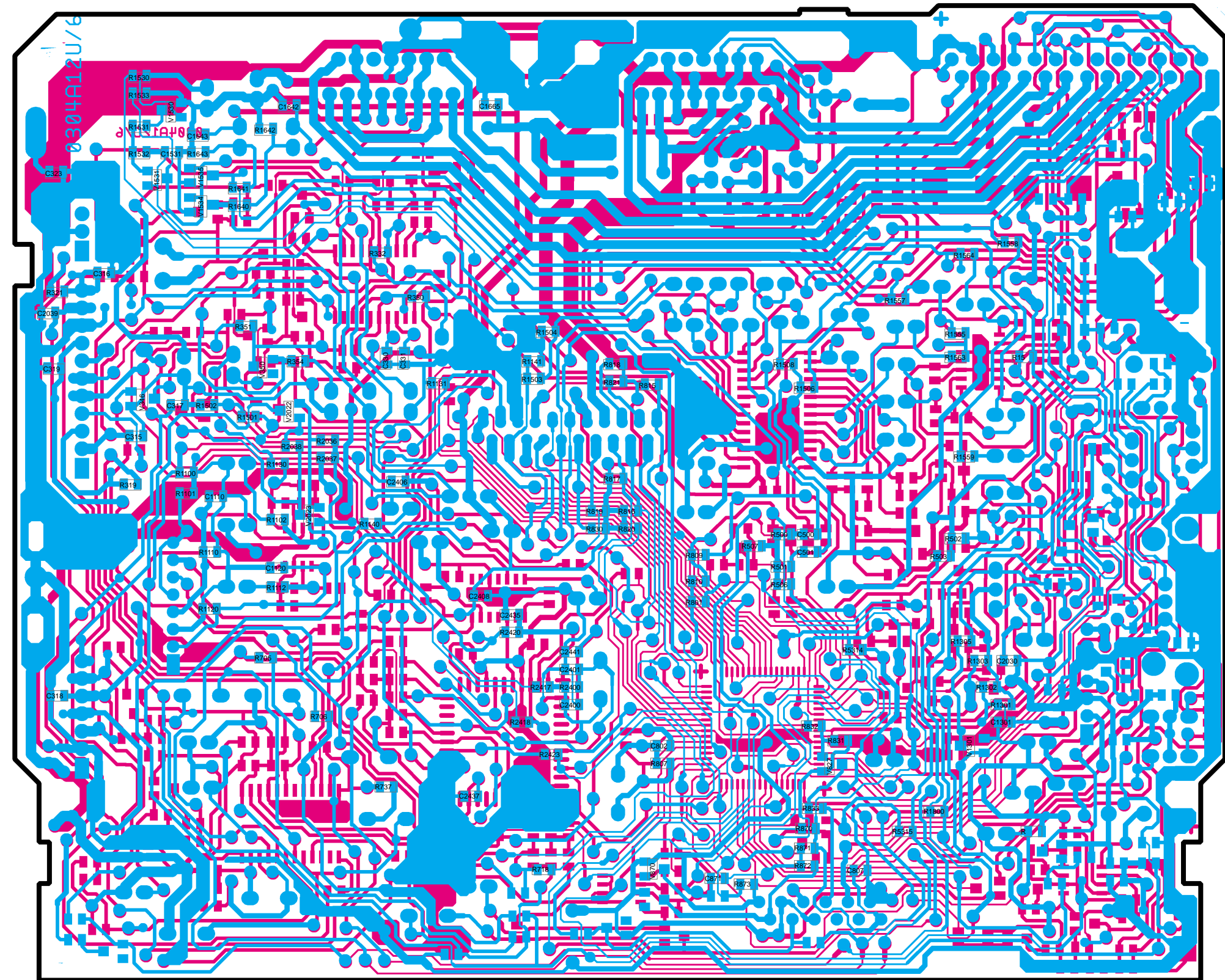
| | | | |
|-------|-------|-------------|-----------|
| BC848 | BC848 | DTC1432KA | DTC144EKA |
| V301 | V802 | V361 | V1516 |
| V351 | V2406 | V1801 | V1519 |
| V352 | V3301 | V2002 | |
| V362 | V5303 | V2031 | DTC114TKA |
| V730 | V2800 | V302 / V303 | |
| V733 | V5302 | V1532 | |
| V800 | V829 | V5304 | V1533 |



A12

Hauptplatte
Main board
PL 0304 A12
Chip
↑

| | | | |
|-------|----------|---------------|-----------|
| BC848 | BC858 | DTC114TKA | DTC1432KA |
| V1530 | V827 | V1534 / V1535 | V146 |
| V2032 | V1531 | V2022 | V1301 |
| | DTC144EK | V2023 | V2035 |
| | | V1199 | |



A12

Hauptplatte
Main board
PL 0304 A12



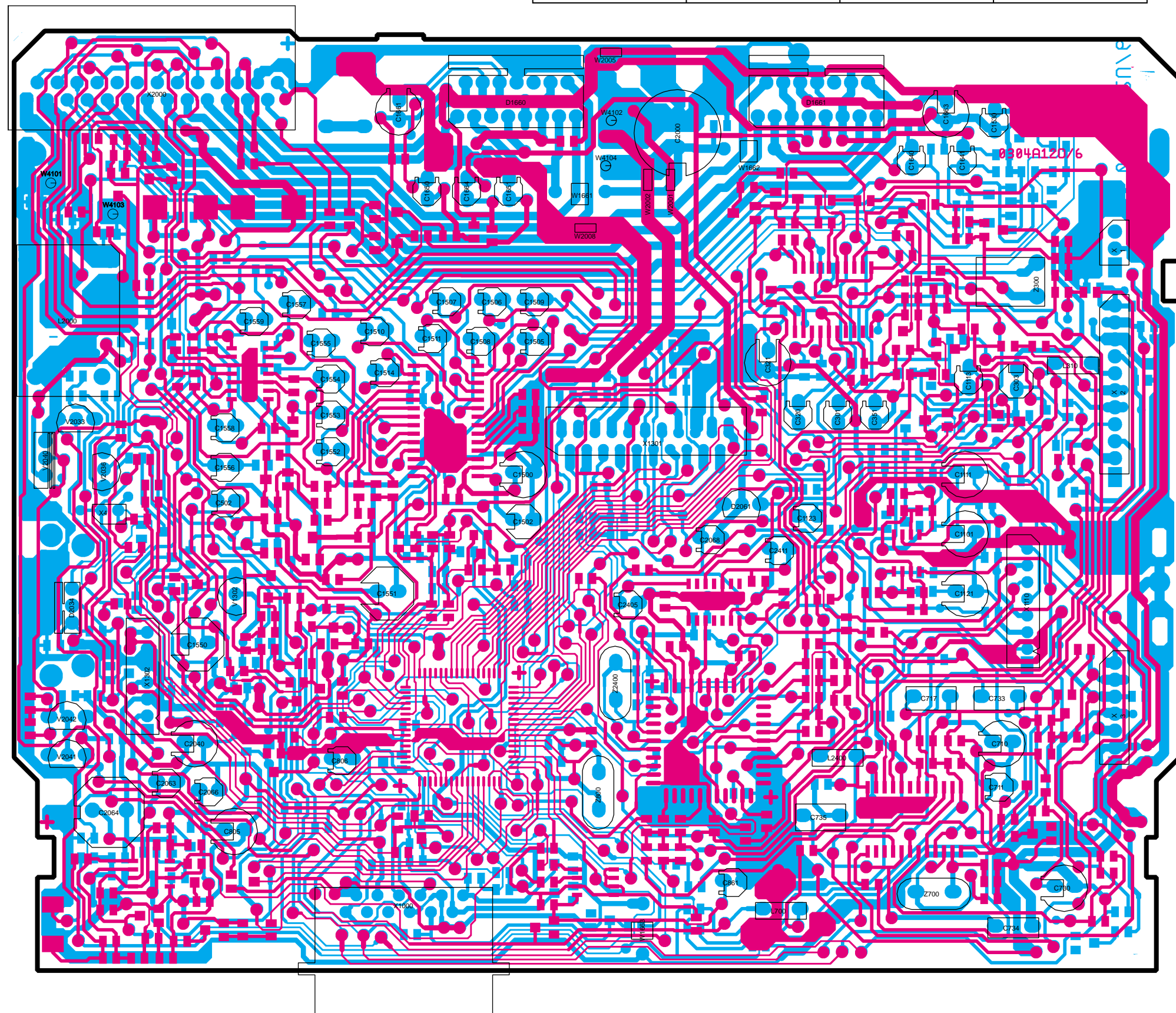
| X1000 (TO X1050) | | | |
|------------------|----------|------------|-------------|
| 1 = U53 | 4 = U10 | 7 = GND | 10 = GND |
| 2 = LAMP_GND | 5 = N.C. | 8 = REMOTE | 11 = SCL_FR |
| 3 = N.C. | 6 = VLED | 9 = SENSE | 12 = SDA_FR |

| X1 |
|---------|
| 1 = ANT |
| 2 = GND |

| X2 |
|---------------|
| 1 = ΔU_FM |
| 2 = FM_OSC |
| 3 = GND |
| 4 = M / L |
| 5 = U81 |
| 6 = MULTIPATH |
| 7 = FS_FM |
| 8 = SLF |
| 9 = SL_STOP |
| 10 = MPX |

| X3 |
|------------|
| 1 = U82 |
| 2 = ΔU_AM |
| 3 = FS_AM |
| 4 = AM_OSC |
| 5 = AM_NF |
| 6 = GND |

| X1301 (TO X1340) |
|------------------|
| 1 = MODE1 |
| 2 = MODE3 |
| 3 = COLLECTOR |
| 4 = MODE2 |
| 5 = ANODE |
| 6 = REEL_R |
| 7 = MMT- |
| 8 = REEL_F |
| 9 = MMT+ |
| 10 = CPS_OUT |
| 11 = U8 |
| 12 = U142 |
| 13 = SMT_R |
| 14 = CPS_CTRL |
| 15 = METAL |
| 16 = SMT_F |
| 17 = GND |
| 18 = NF_L |
| 19 = NF_R |
| 20 = DOLBY_ON |
| 21 = F / R |



A12

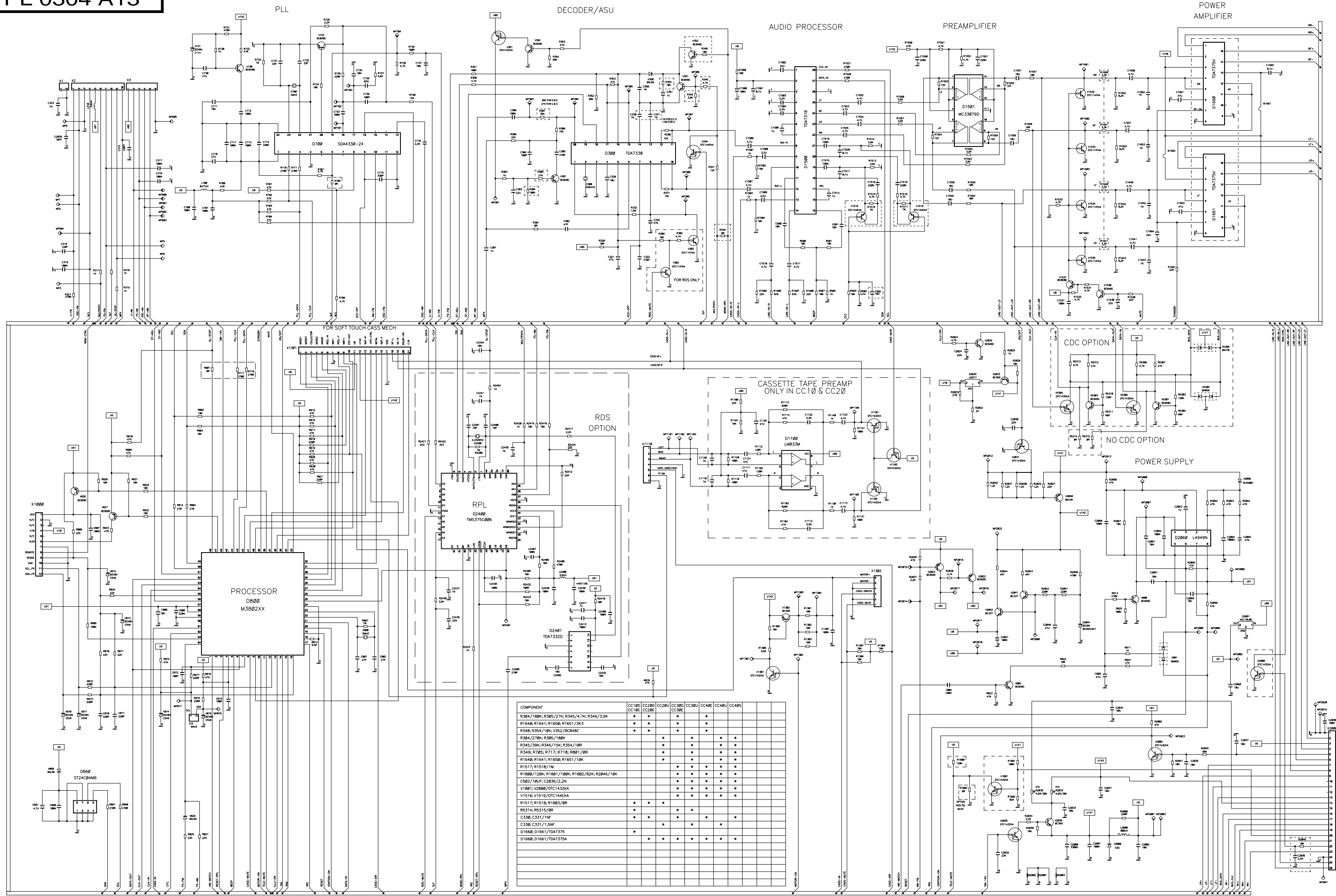
| X2000 (TO X2010) |
|------------------|
| 1 = GND |
| 2 = LINE_OUT_LF |
| 3 = BATTERY |
| 4 = LINE_OUT_LR |
| 5 = IGNITION |
| 6 = LINE_OUT_RF |
| 7 = LR - |
| 8 = LINE_OUT_RR |
| 9 = LR + |
| 10 = N.C. |
| 11 = LF + |
| 12 = N.C. |
| 13 = LF - |
| 14 = AUTO_ANT. |
| 15 = SW_14V |
| 16 = BUS_DATA |
| 17 = RF - |
| 18 = BUS_CLK |
| 19 = RF + |
| 20 = TEL_MUTE |
| 21 = RR + |
| 22 = REM_CONT. |
| 23 = RR - |
| 24 = AF_GND |
| 25 = LINE_IN_L |
| 26 = LINE_IN_R |

| X4 (TO X2020) |
|---------------|
| 1 = SCL |
| 2 = SDA |

| X1302 |
|-----------------|
| 1 = MOTOR + |
| 2 = MOTOR - |
| 3 = GND |
| 4 = CASS_SWITCH |
| 5 = GND |
| 6 = CASS_MUTE |

| X1110 |
|---------------|
| 1 = GND |
| 2 = FR_SWITCH |
| 3 = TAPE_DIR |
| 4 = GND |
| 5 = RIGHT |
| 6 = COM |
| 7 = LEFT |

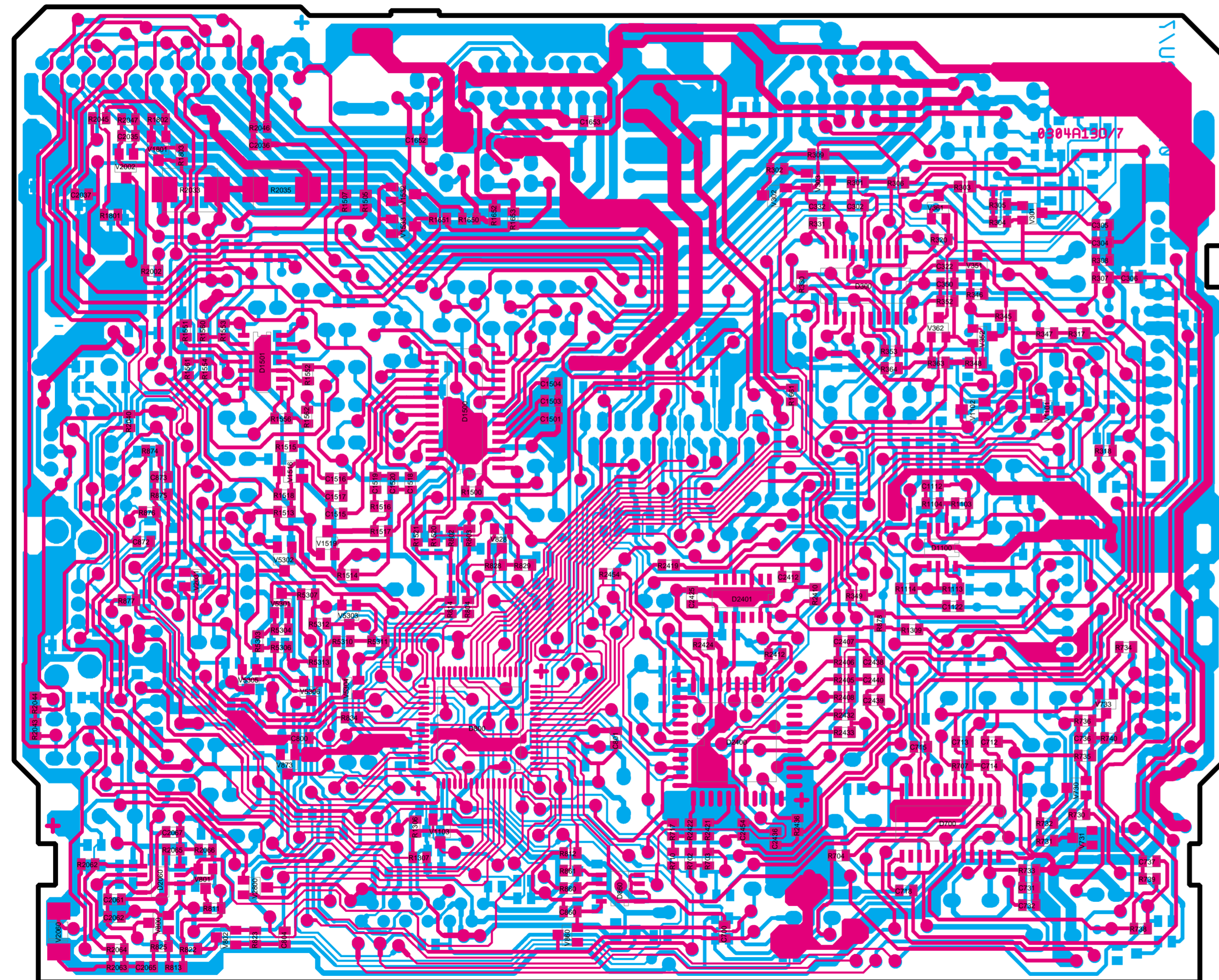
| PL 0304 A12 | R304 | R305 | R345 | R346 | R348/10k R354/10k V352 BC848C | R354 10R | C502 10μ | V1516 V1519 DTC144EKA | R5314 / 0R R5315 / 0R | R349 / 0R R705 / 0R R717 / 0R R718 / 0R R801 / 0R | R1640 R1641 R1650 R1651 | C330 | R2046 / 10K C2036 / 2.2N V2800 / DTC143ZKA | R1800 / 120K R1801 / 100K R1802 / 82K V1801 DTC143ZKA | R1517/1M R1518/1M R1803/0R | R1517 R1518 R1803 | D1660 D1661 | |
|--|------|------|------|------|--|-------------|-------------|-----------------------------|--------------------------|---|----------------------------------|-------|---|---|----------------------------------|-------------------------|----------------|----------|
| BOSTON RCR 128 (E) DRESDEN RCR 128 (D) | 180K | 27K | 4,7K | 3,9K | * | | | | NO CDC OPTION | NO RDS OPTION | 3,3K | 1NF | REMOTE CONTROL OPTION | TEL MUTE OPTION | | | 0R | TDA7375 |
| FREIBURG RCM 148 (D) KINGSTON DJ (D) LOUISIANA RCM 148 (E) SIENA RCM 148 (E) | 180K | 27K | 4,7K | 3,9K | * | | | | | | 3,3K | 1NF | | | | | 0R | TDA7375A |
| ARIZONA CM 148 (U) | 270K | 180K | 39K | 15K | | * | | | | * | 10K | 1,5NF | | | | | 0R | TDA7375A |
| COBURG RCR 168 (D) COLORADO RCR 168 (E) PORTOFINO RCR 168 (E) | 180K | 27K | 4,7K | 3,9K | * | | * | * | * | | 3,3K | 1NF | * | * | * | | | TDA7375A |
| LAS VEGAS DJ (E) FIAT MULTIPLA (E) RAVENNA RCM 168 (E) ST. LOUIS DJ (E) ST. TROPEZ RCM 168 (E) | 180K | 27K | 4,7K | 3,9K | * | | * | * | | | 3,3K | 1NF | * | * | * | | | TDA7375A |
| COLORADO CM 168 (U) MUNICH CM 168 (S) | 270K | 180K | 39K | 15K | | | * | * | | * | 10K | 1,5NF | * | * | | 1M | | TDA7375A |
| | 270K | 180K | 39K | 15K | | | * | * | | * | 10K | 1NF | * | * | | 1M | | TDA7375A |



Hauptplatte / Main board A13

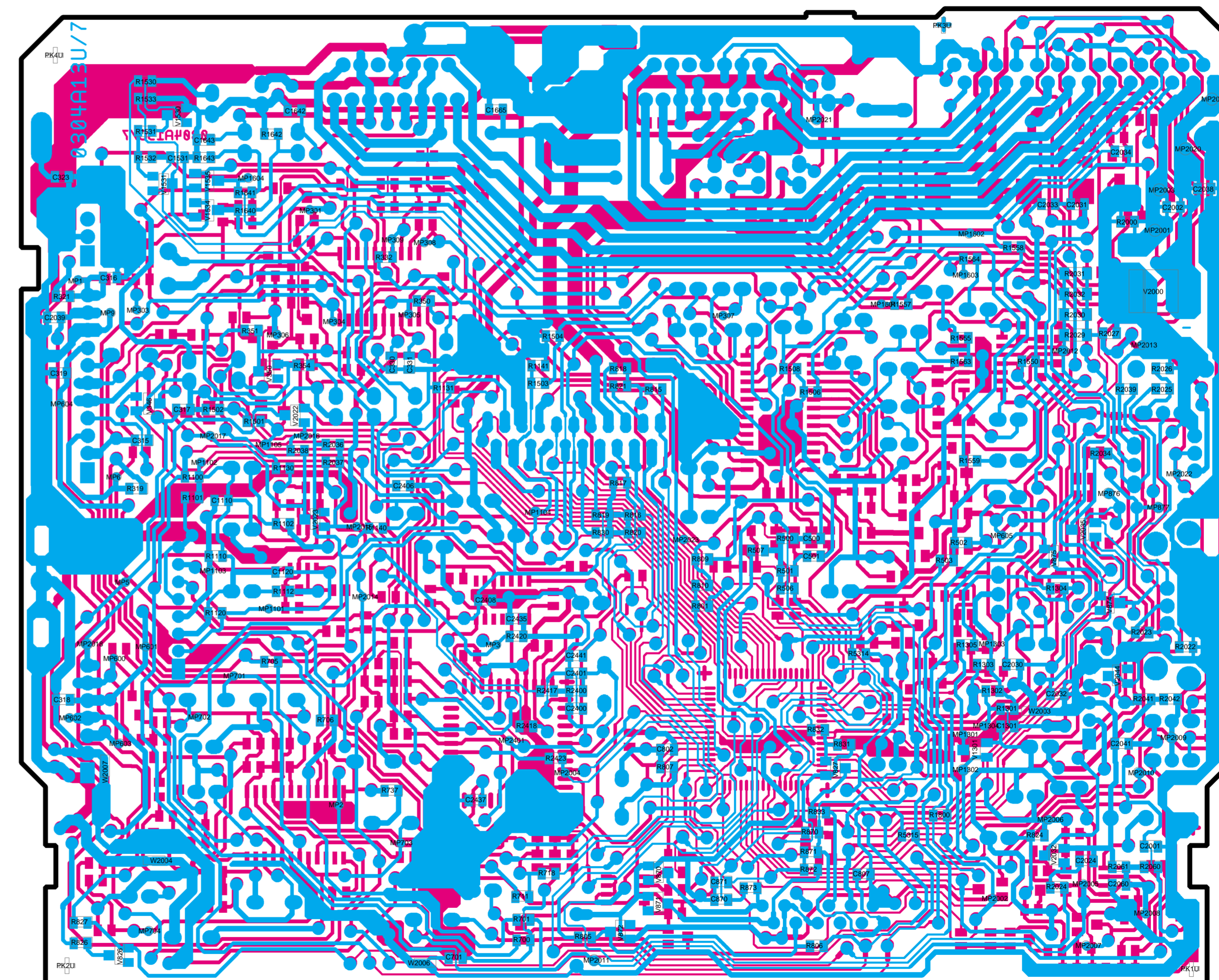
A13

Hauptplatte
Main board
PL 0304 A13
Chip



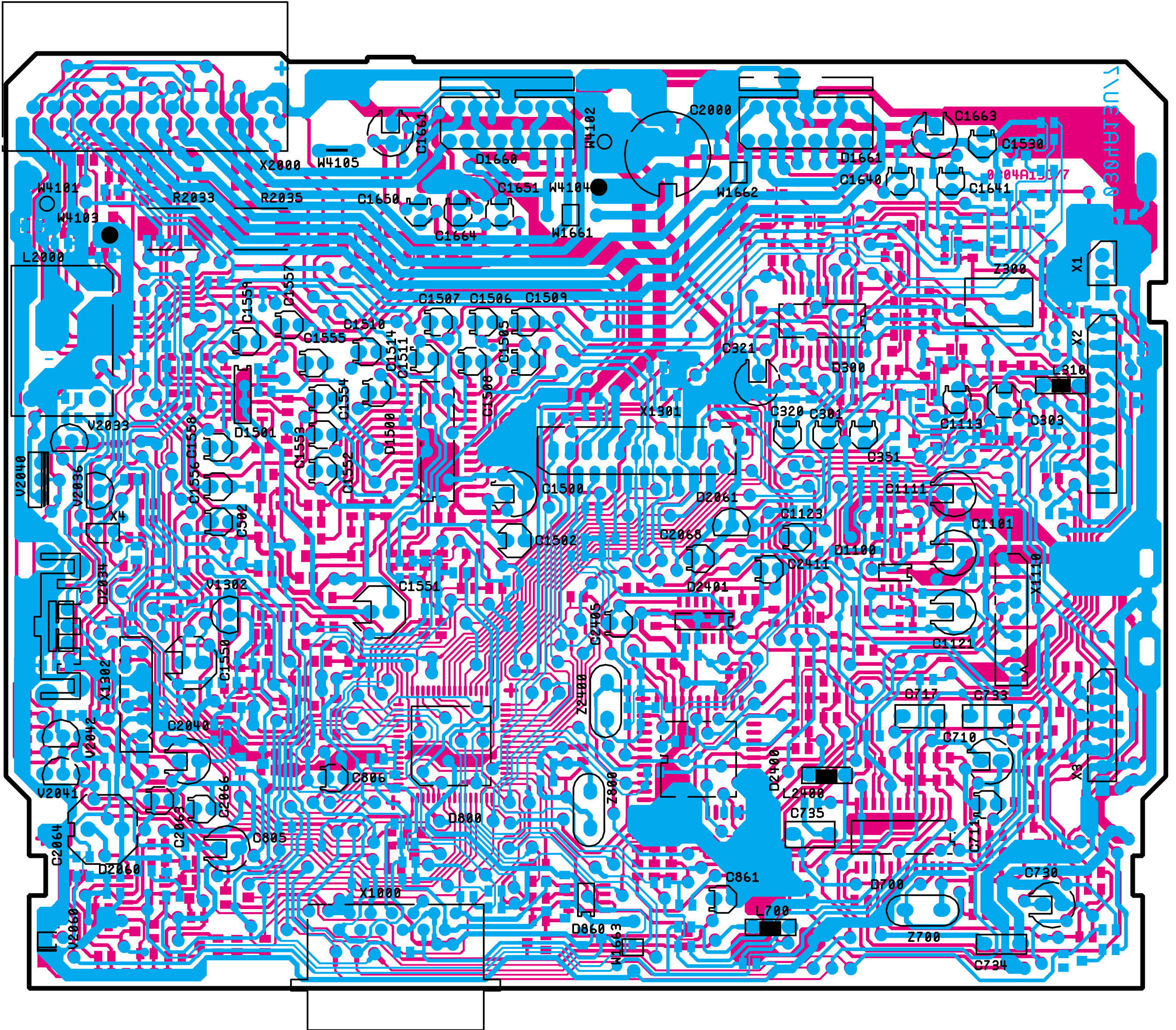
A13

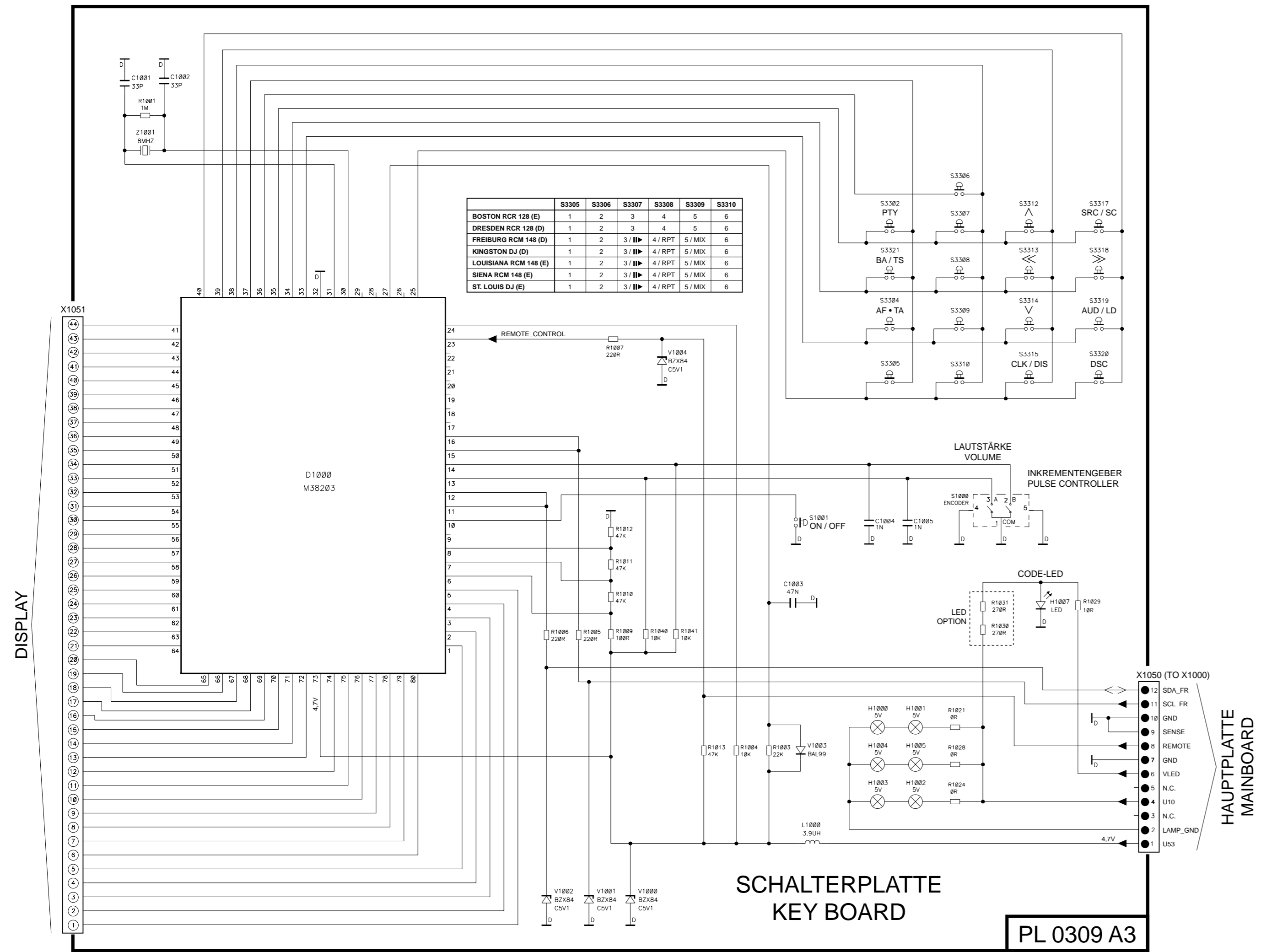
Hauptplatte
Main board
PL 0304 A13
Chip



Hauptplatte
Main board
PL 0304 A13

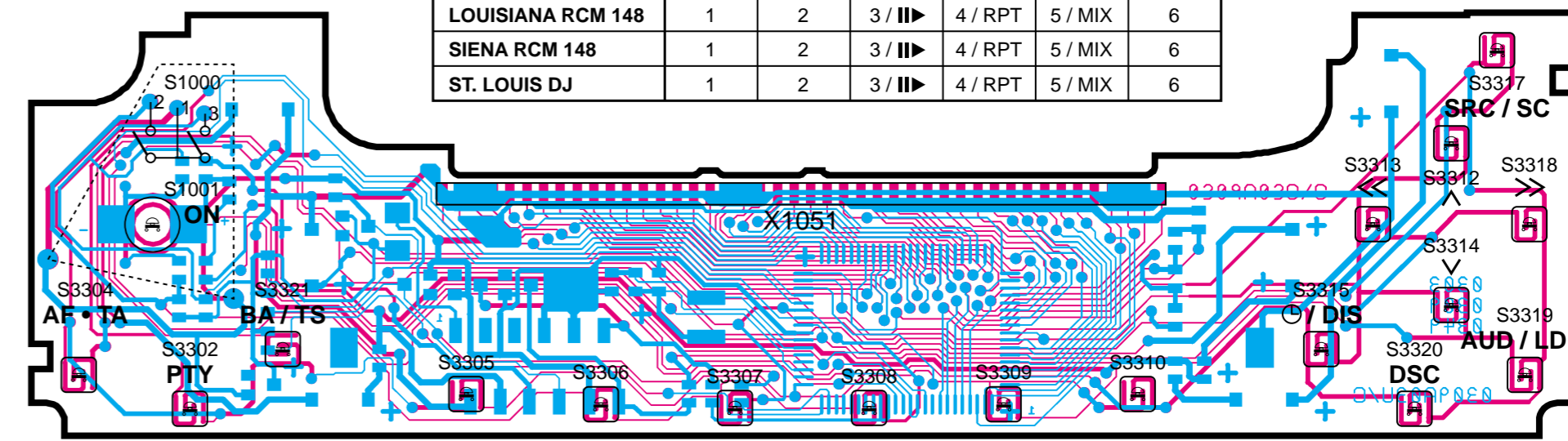
A13





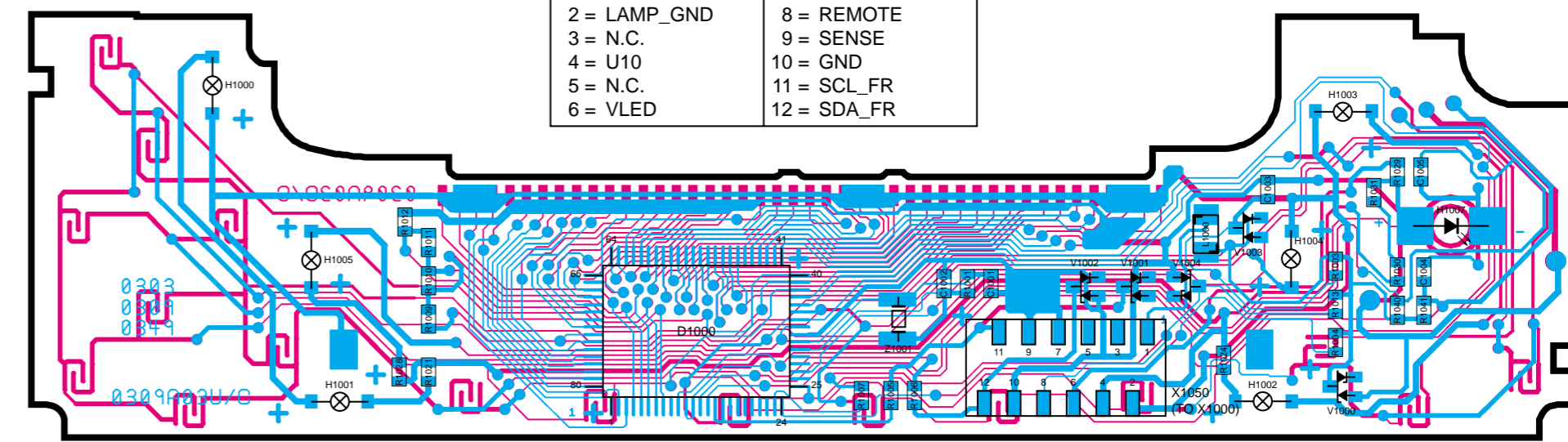
Schalterplatte
Key board
PL 0309 A03

| | S3305 | S3306 | S3307 | S3308 | S3309 | S3310 |
|-------------------|-------|-------|---------|---------|---------|-------|
| BOSTON RCR 128 | 1 | 2 | 3 | 4 | 5 | 6 |
| DRESDEN RCR 128 | 1 | 2 | 3 | 4 | 5 | 6 |
| FREIBURG RCM 148 | 1 | 2 | 3 / III | 4 / RPT | 5 / MIX | 6 |
| KINGSTON DJ | 1 | 2 | 3 / III | 4 / RPT | 5 / MIX | 6 |
| LOUISIANA RCM 148 | 1 | 2 | 3 / III | 4 / RPT | 5 / MIX | 6 |
| SIENA RCM 148 | 1 | 2 | 3 / III | 4 / RPT | 5 / MIX | 6 |
| ST. LOUIS DJ | 1 | 2 | 3 / III | 4 / RPT | 5 / MIX | 6 |



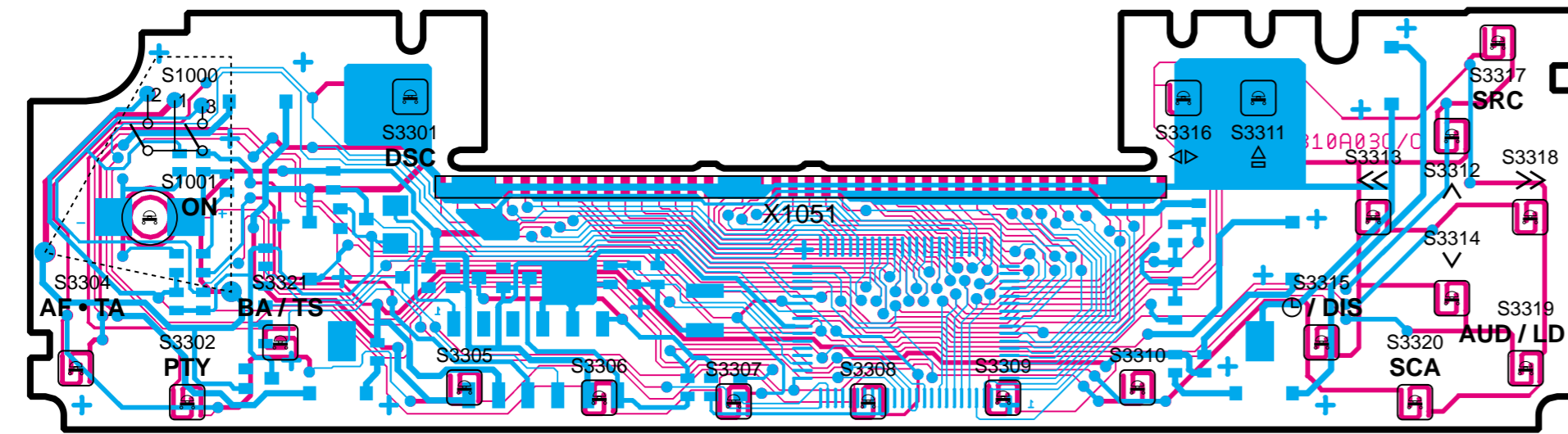
Schalterplatte
Key board
PL 0309 A03
Chip

| X1050 (TO X1000) | |
|------------------|-------------|
| 1 = U53 | 7 = GND |
| 2 = LAMP_GND | 8 = REMOTE |
| 3 = N.C. | 9 = SENSE |
| 4 = U10 | 10 = GND |
| 5 = N.C. | 11 = SCL_FR |
| 6 = VLED | 12 = SDA_FR |



Schalterplatte
Key board
PL 0310 A03

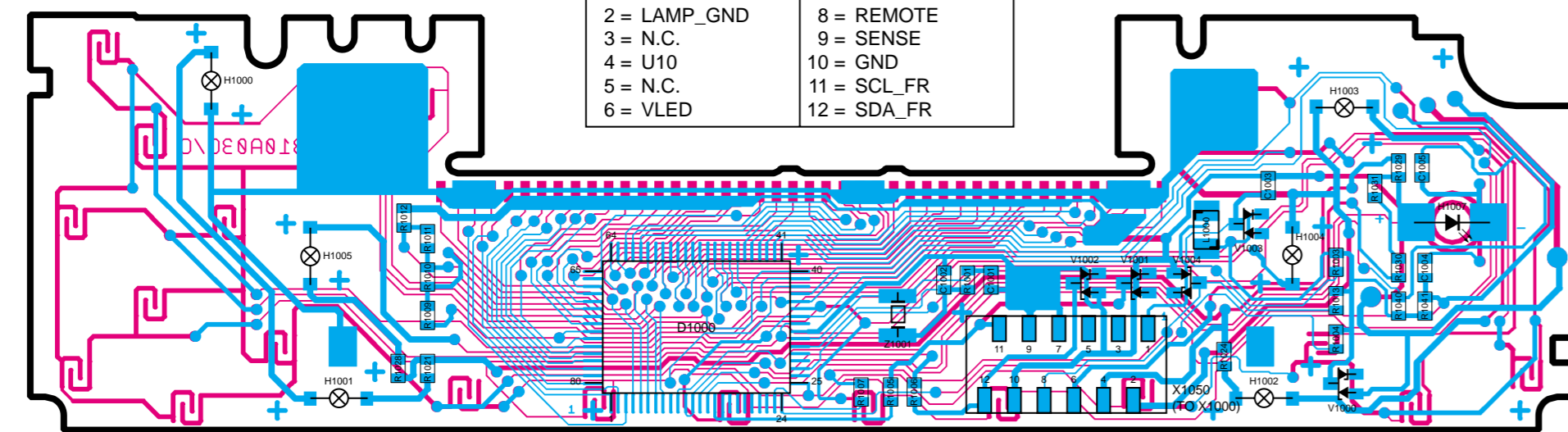
| | S3305 | S3306 | S3307 | S3308 | S3309 | S3310 |
|--------------------|---------|--------|---------|---------|---------|----------|
| COBURG RCR 168 | 1 / MTL | 2 | 3 / II▶ | 4 | 5 | 6 |
| COLORADO RCR 168 | 1 / MTL | 2 | 3 / II▶ | 4 | 5 | 6 |
| LAS VEGAS DJ | 1 / MTL | 2 / D□ | 3 / II▶ | 4 / RPT | 5 / MIX | 6 / LIST |
| PORTOFINO RCR 168 | 1 / MTL | 2 | 3 / II▶ | 4 | 5 | 6 |
| RAVENNA RCM 168 | 1 / MTL | 2 / D□ | 3 / II▶ | 4 / RPT | 5 / MIX | 6 / LIST |
| ST. TROPEZ RCM 168 | 1 / MTL | 2 / D□ | 3 / II▶ | 4 / RPT | 5 / MIX | 6 / LIST |
| FIAT MULTIPLA | 1 / MTL | 2 / D□ | 3 / II▶ | 4 / RPT | 5 / MIX | 6 / LIST |



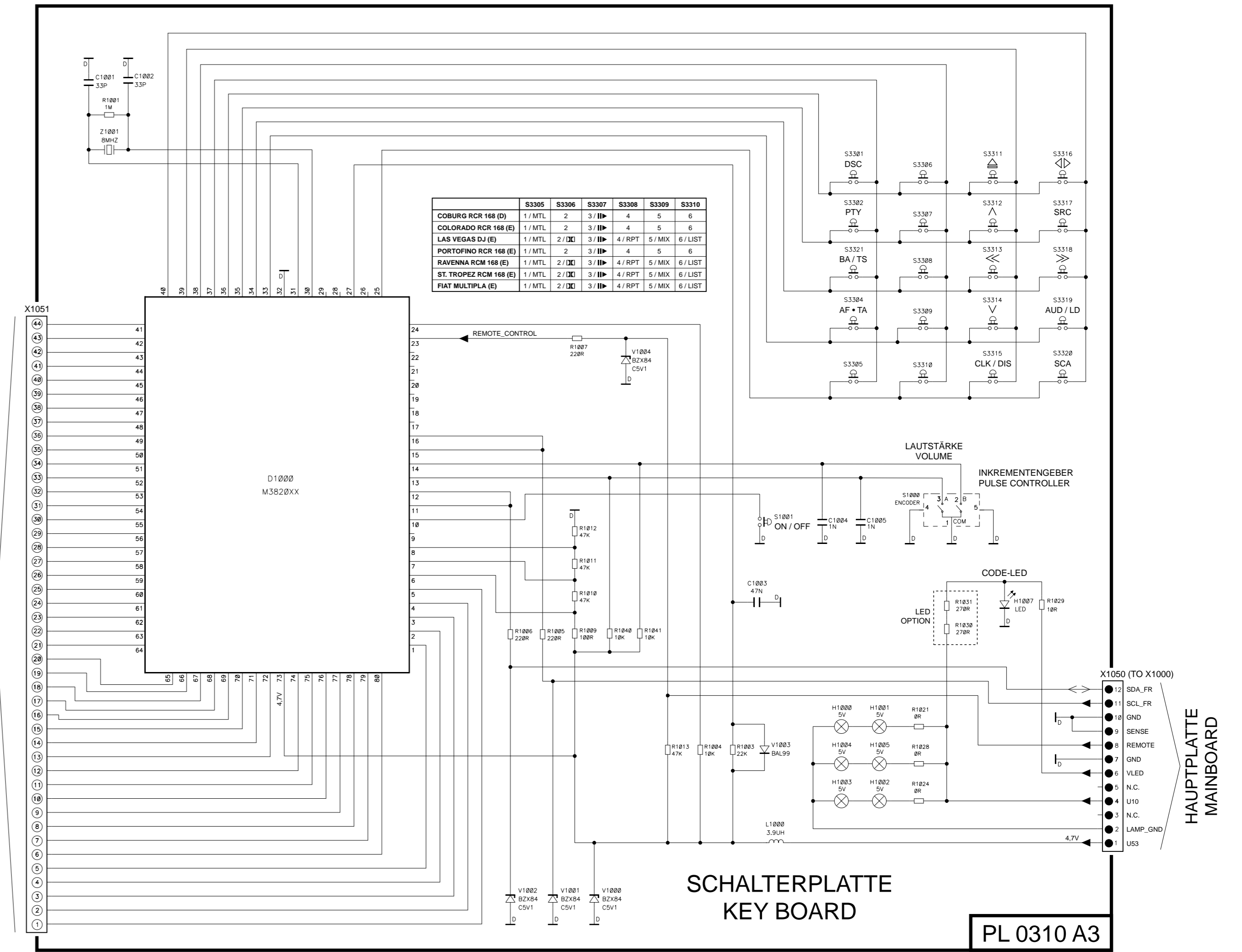
Schalterplatte
Key board
PL 0310 A03
Chip

X1050 (TO X1000)

| | |
|--------------|-------------|
| 1 = U53 | 7 = GND |
| 2 = LAMP_GND | 8 = REMOTE |
| 3 = N.C. | 9 = SENSE |
| 4 = U10 | 10 = GND |
| 5 = N.C. | 11 = SCL_FR |
| 6 = VLED | 12 = SDA_FR |



DISPLAY



HAUPTPLATTE
MAINBOARD

PL 0310 A3