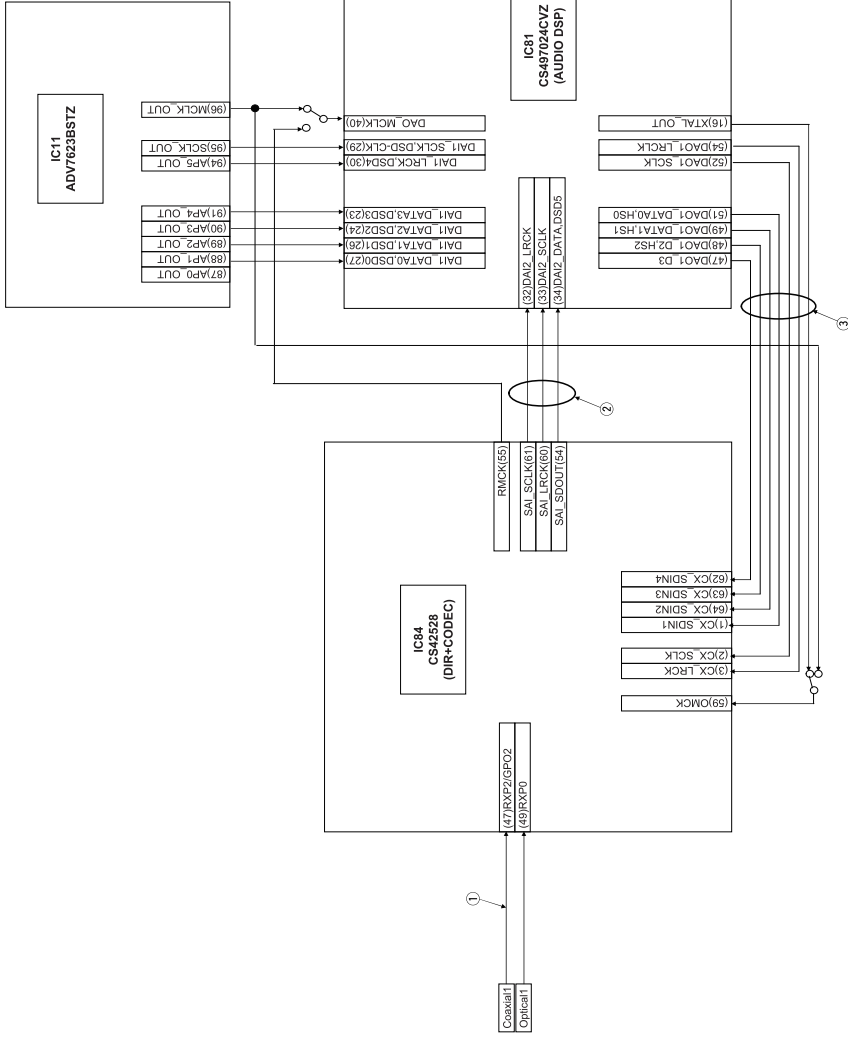
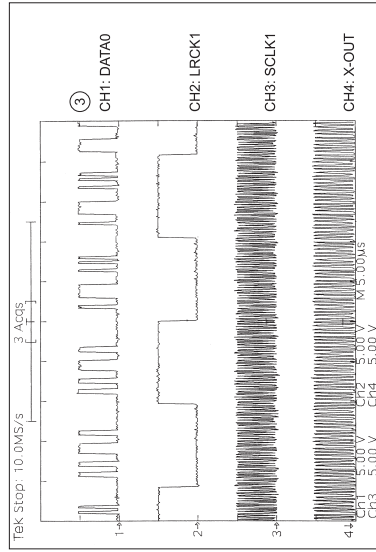
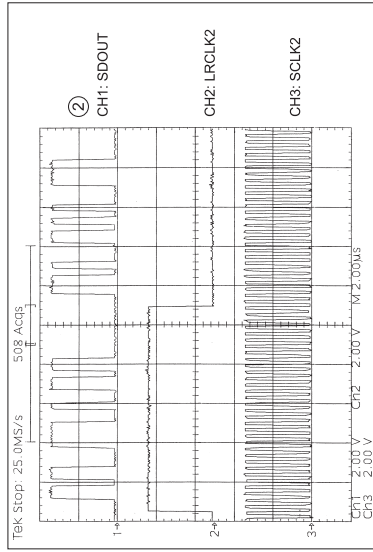
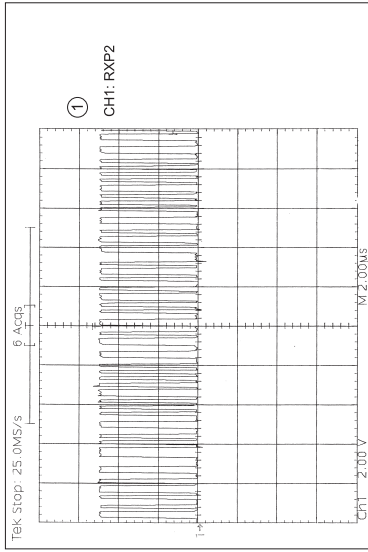
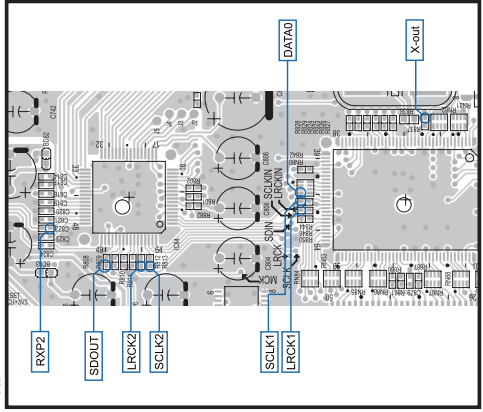


CLOCK FLOW & WAVE FORM IN DIGITAL BLOCK

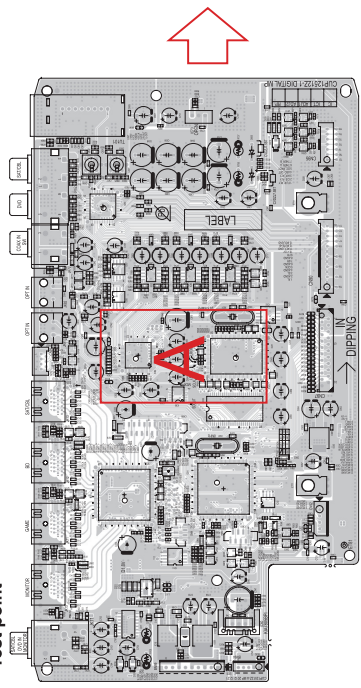
Wave form



Detail A

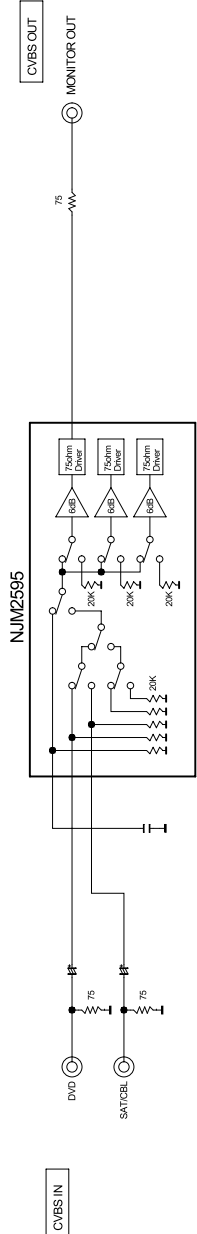
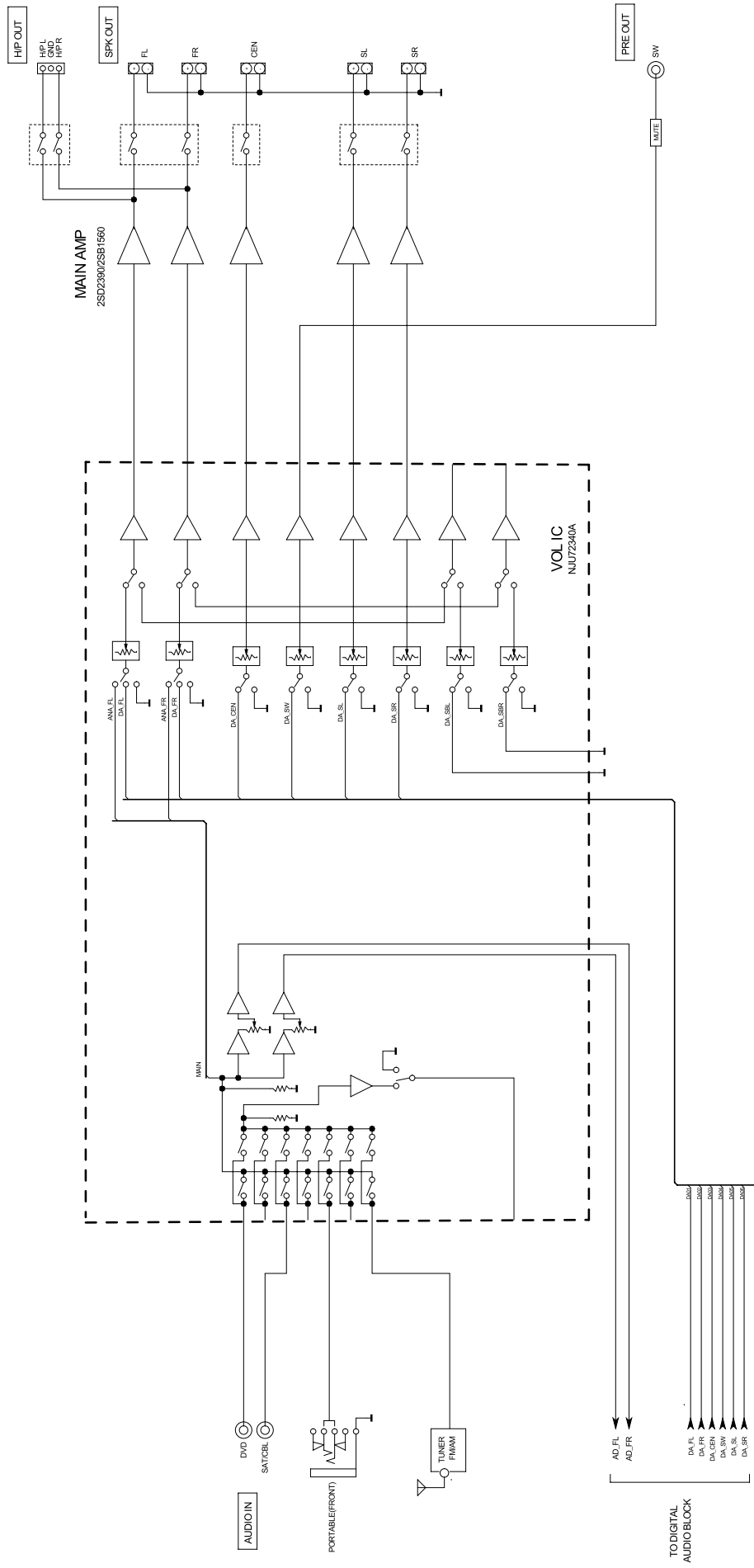


Test point



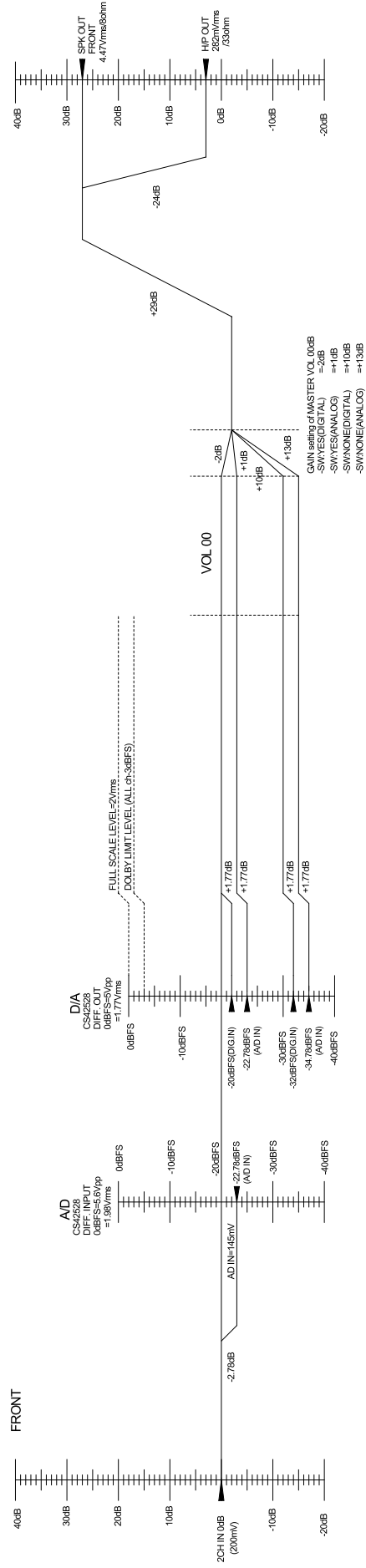
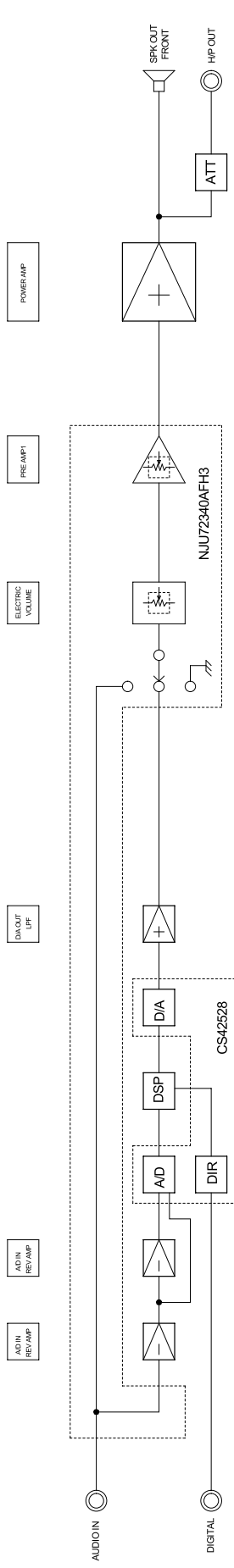
ANALOG AUDIO/VIDEO BLOCK DIAGRAM

AVRE200/X500 ANALOG AUDIO/VIDEO BLOCK

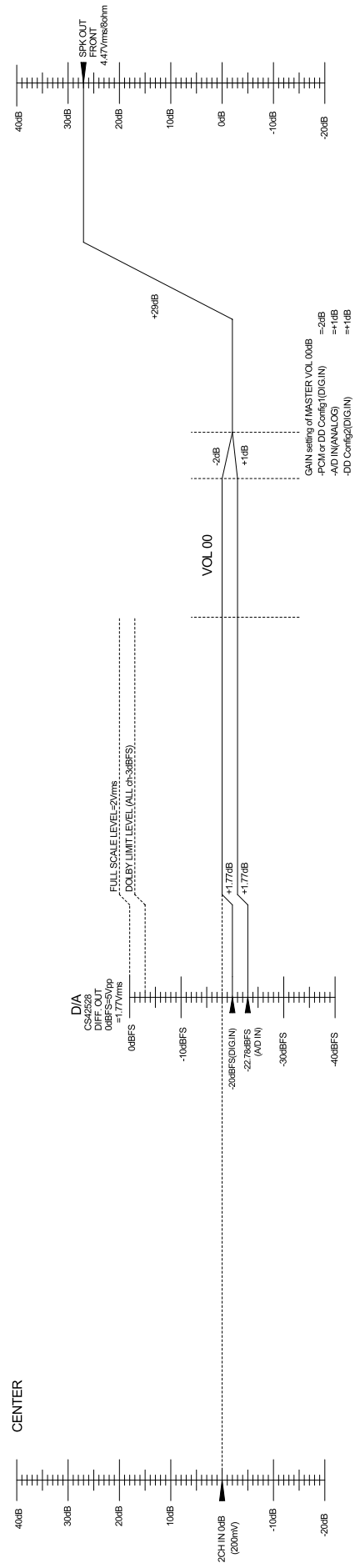
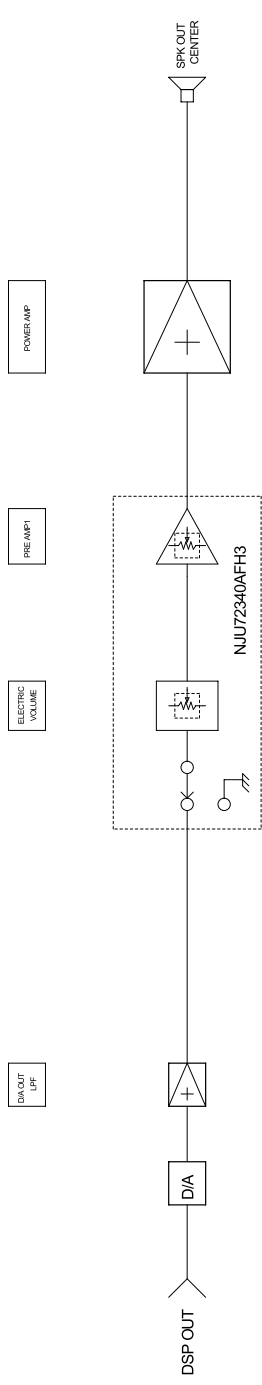


LEVEL DIAGRAM

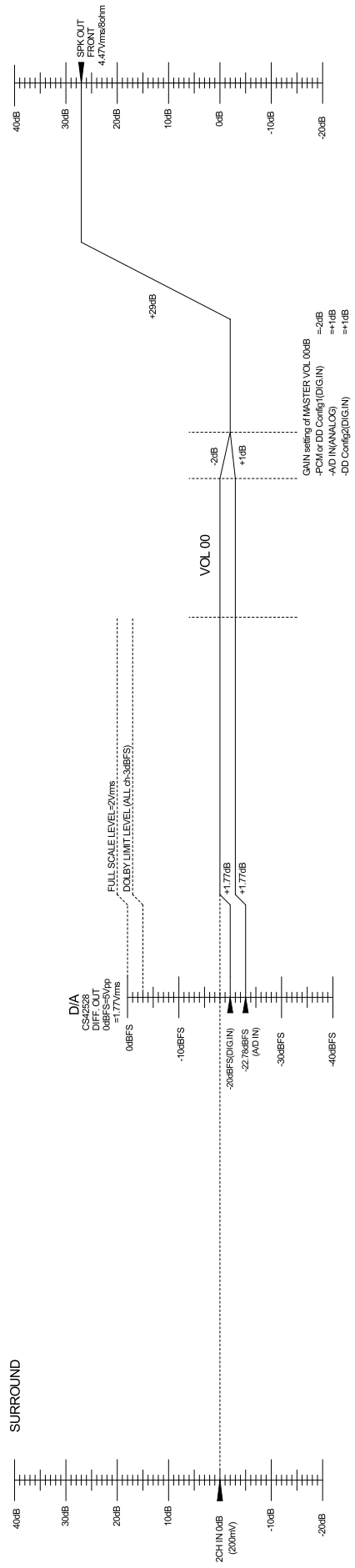
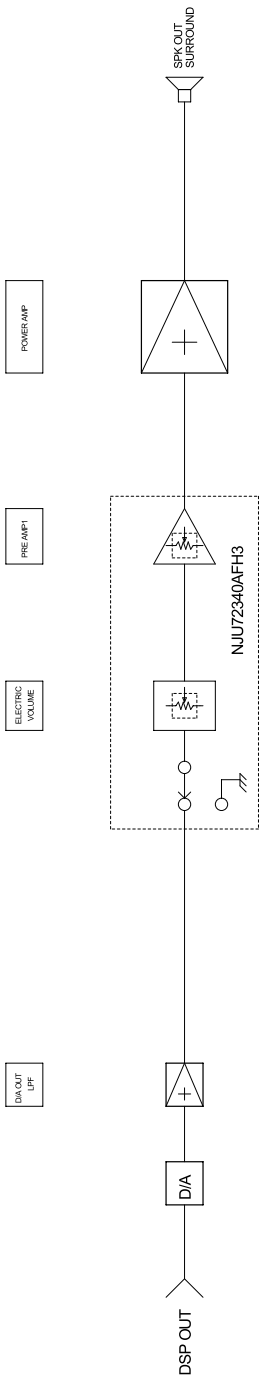
FRONT ch



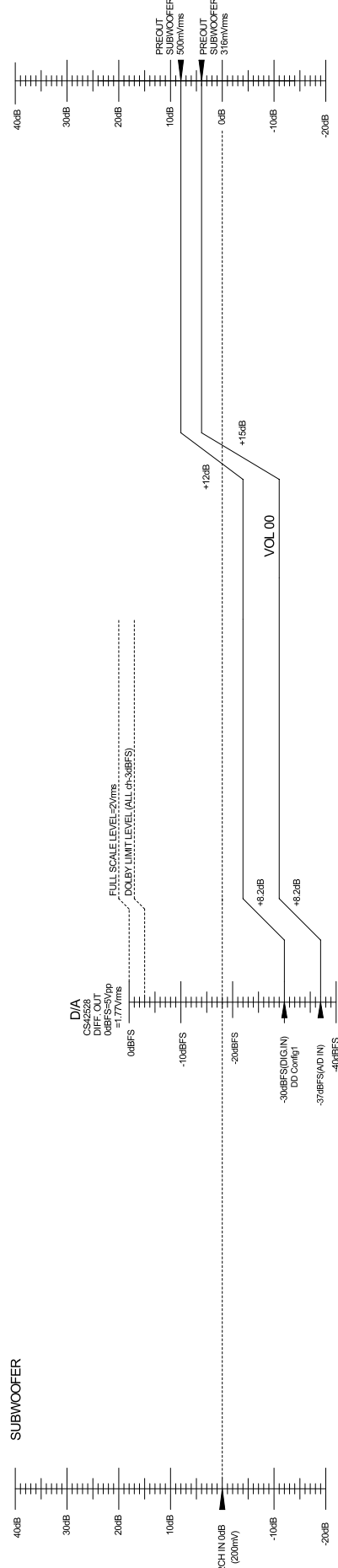
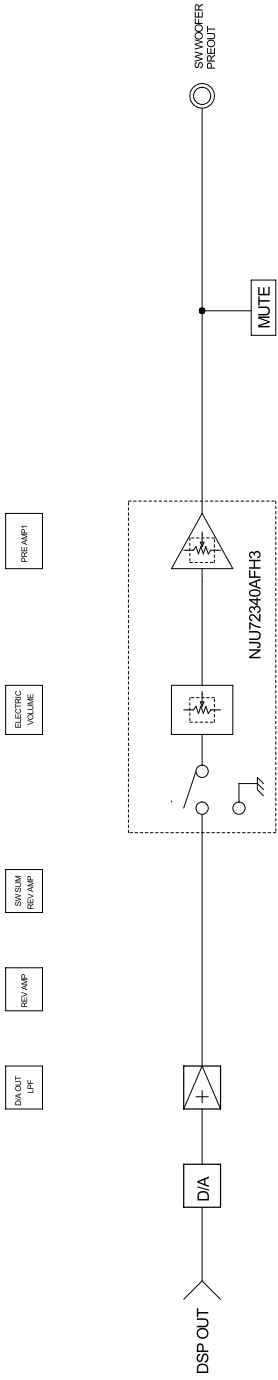
CENTER ch



SURROUND ch

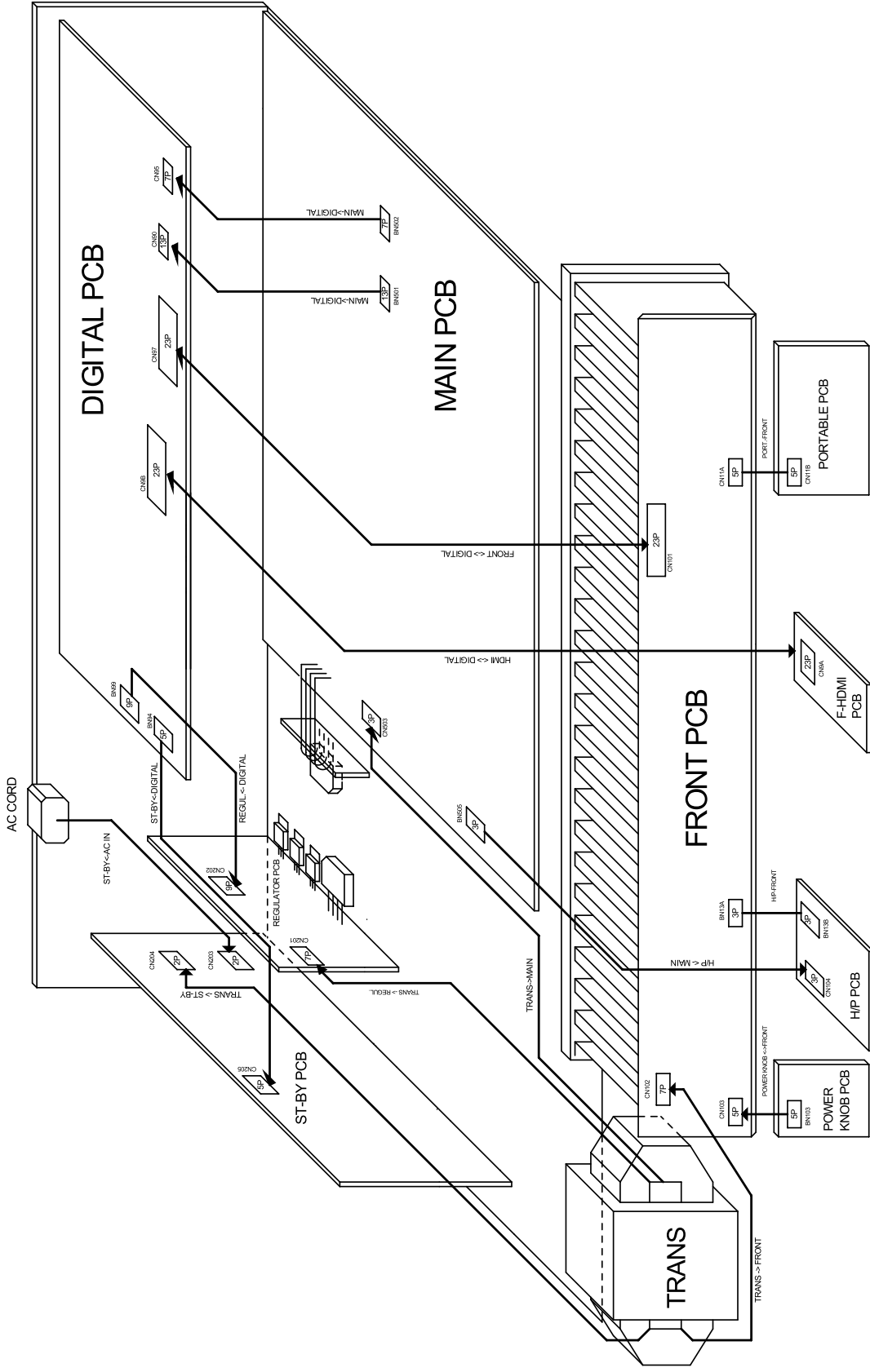


SUBWOOFER ch



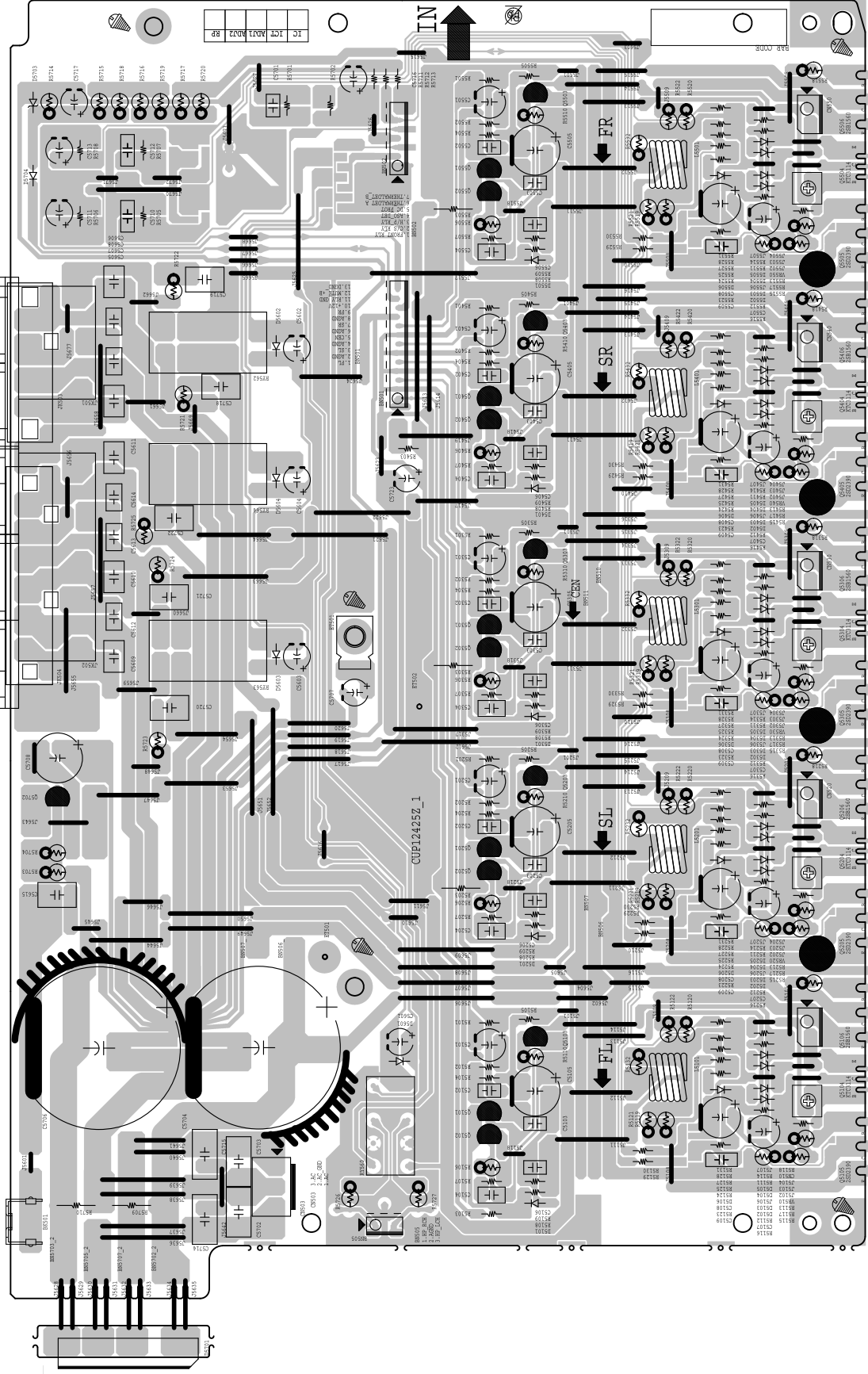
WIRING DIAGRAM

AVRE200/X500 WIRING DIAGRAM

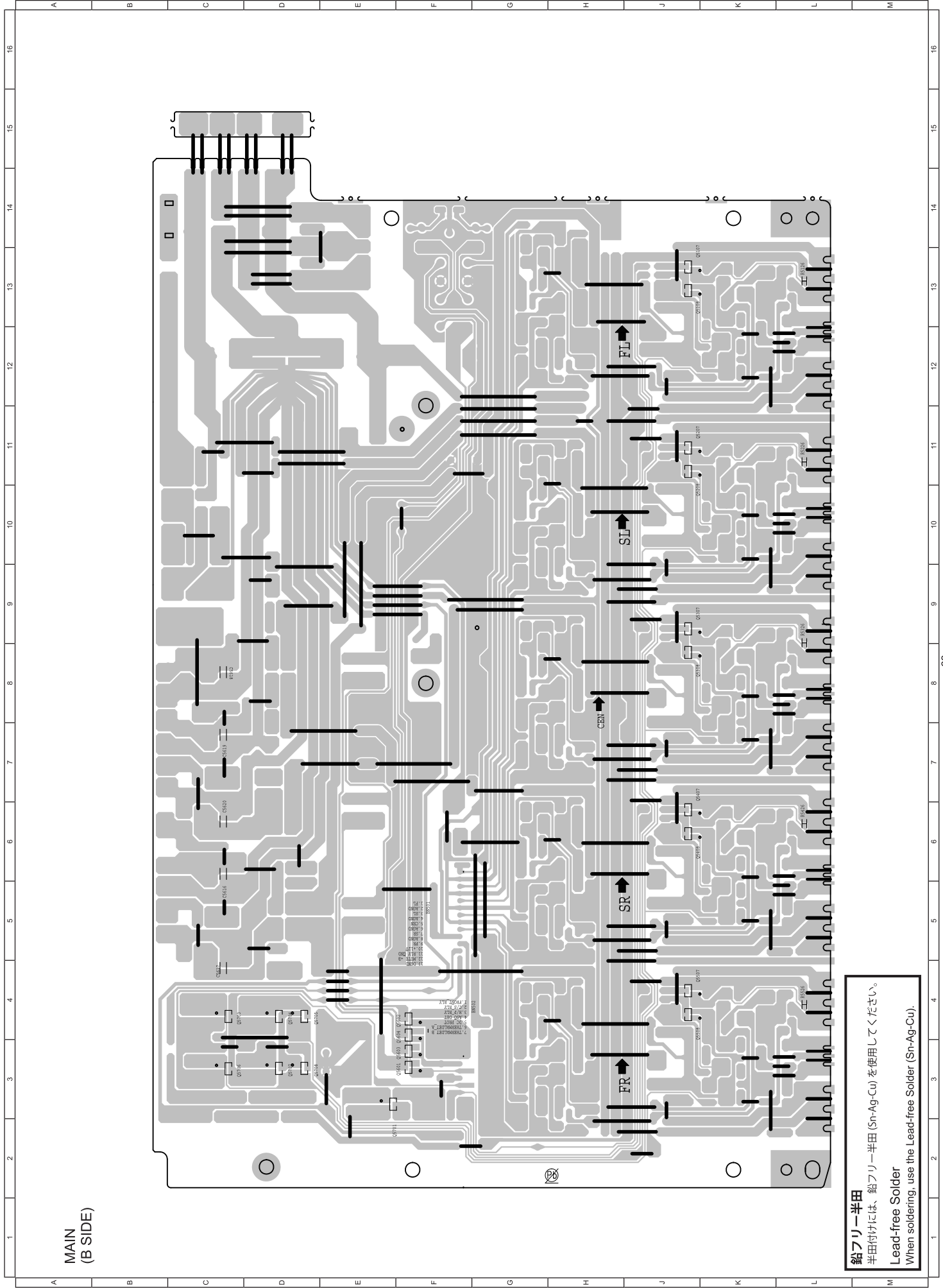


PRINTED WIRING BOARDS

MAIN
(A SIDE)

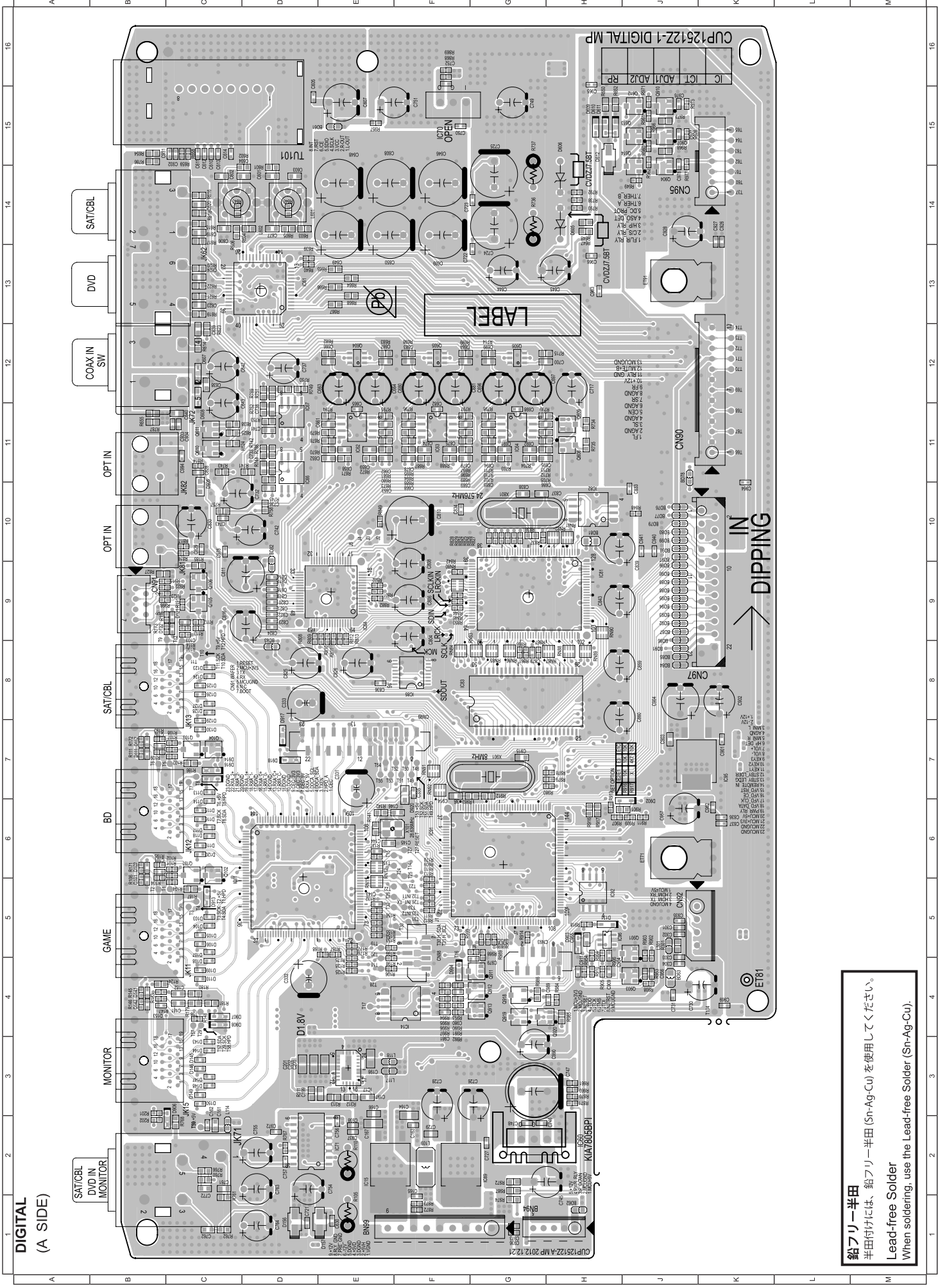


鉛フリー半田
半田付けには、鉛フリー半田 (Sn-Ag-Cu) を使用してください。
Lead-free Solder
When soldering, use the Lead-free Solder (Sn-Ag-Cu).

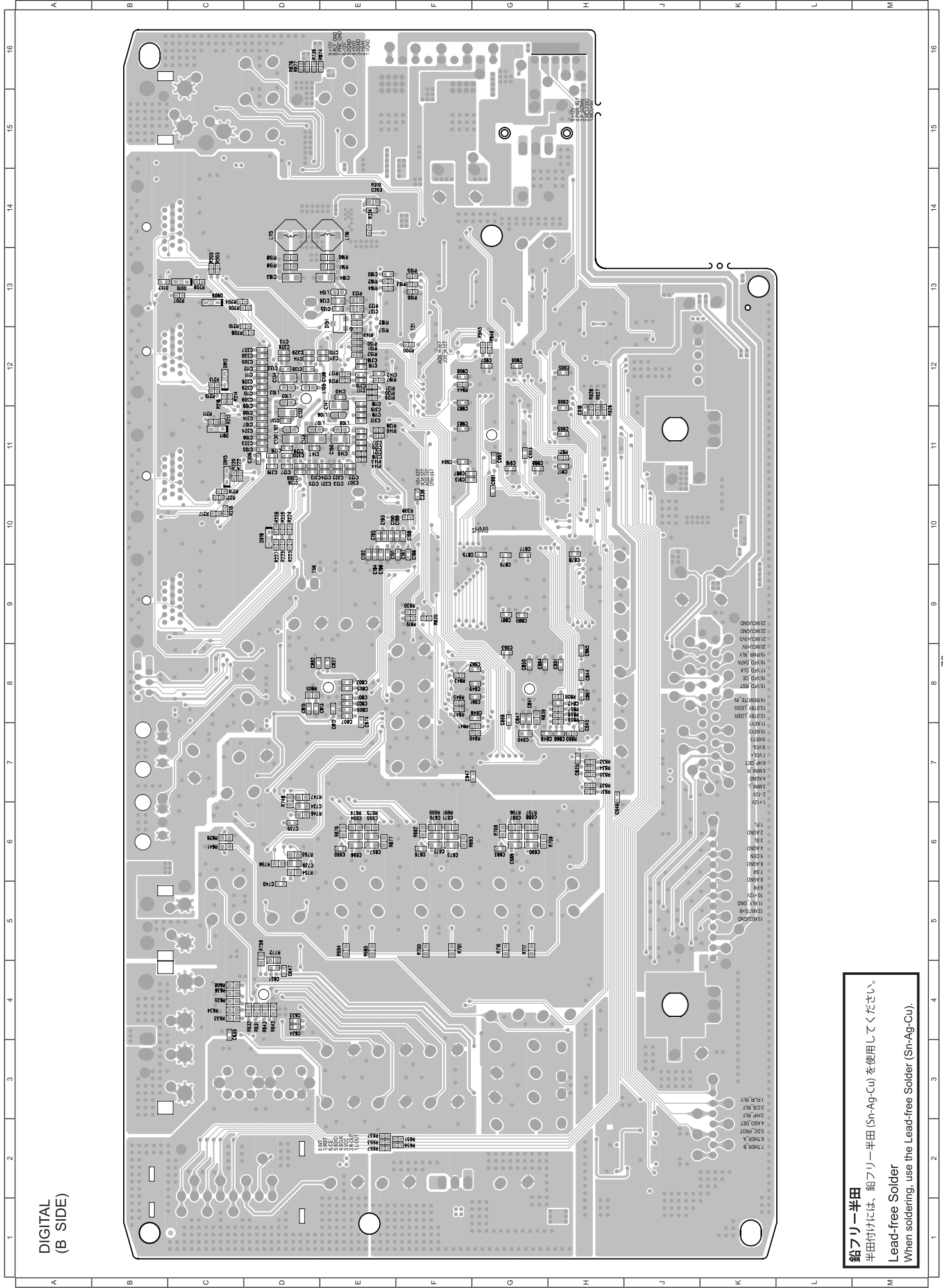


MAIN
(B SIDE)

鉛フリー半田
半田付けには、鉛フリー半田 (Sn-Ag-Cu) を使用してください。
Lead-free Solder
When soldering, use the Lead-free Solder (Sn-Ag-Cu).

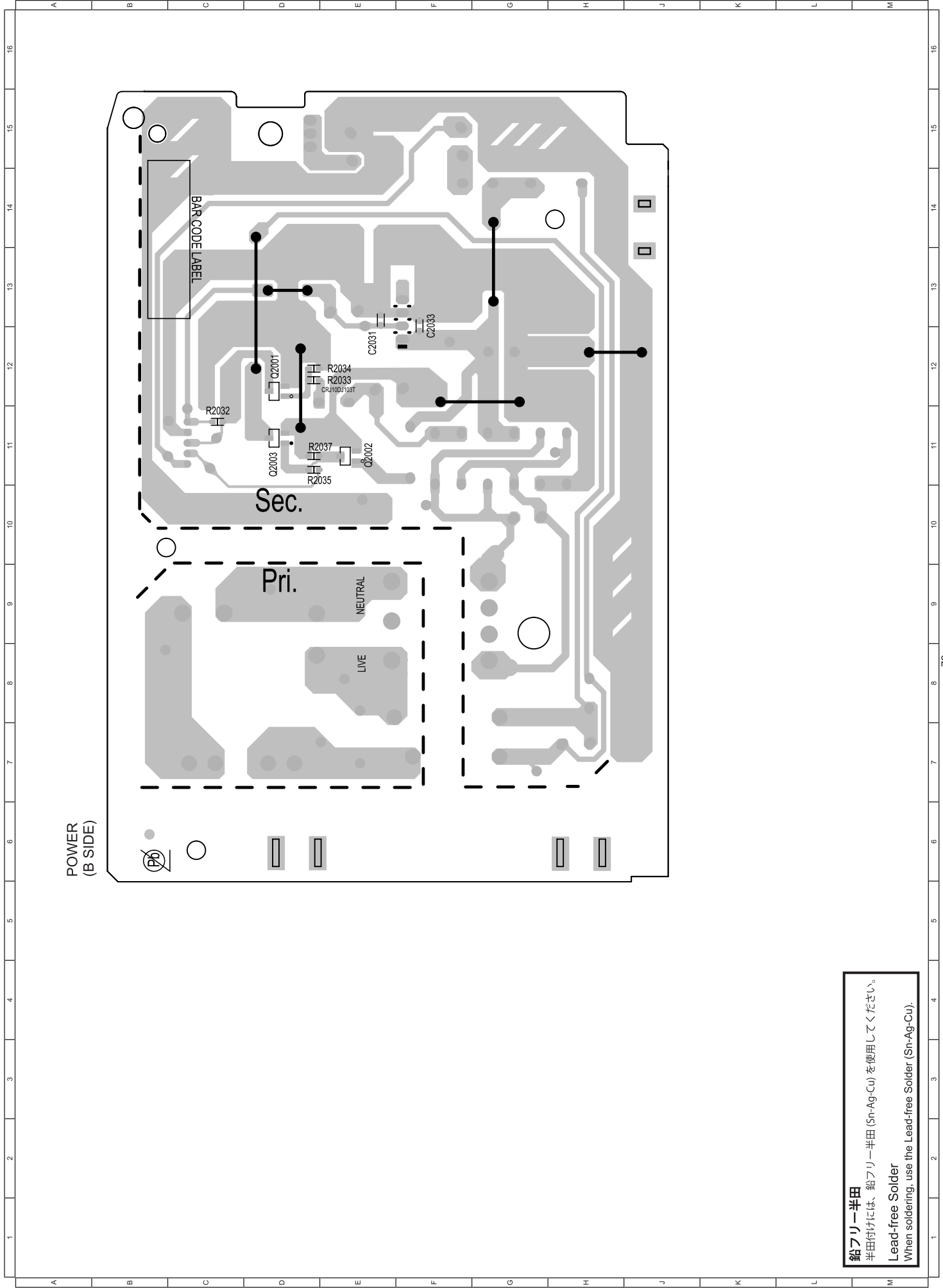


鉛フリー半田
 半田付けには、鉛フリー半田 (Sn-Ag-Cu) を使用してください。
Lead-free Solder
 When soldering, use the Lead-free Solder (Sn-Ag-Cu).



DIGITAL
(B SIDE)

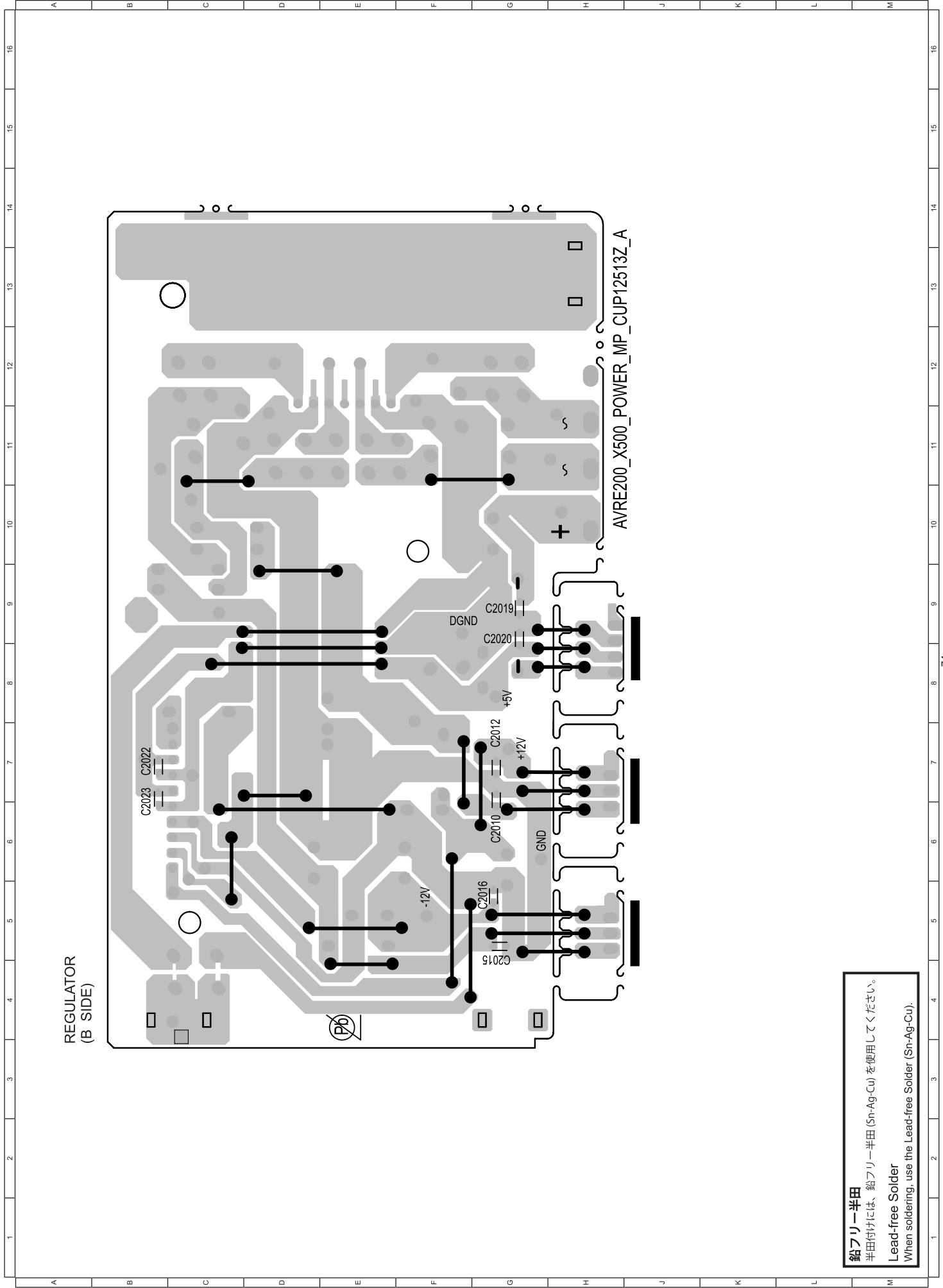
鉛フリー半田
半田付けには、鉛フリー半田 (Sn-Ag-Cu) を使用してください。
Lead-free Solder
When soldering, use the Lead-free Solder (Sn-Ag-Cu).



POWER
(B SIDE)



鉛フリー半田
半田付けには、鉛フリー半田 (Sn-Ag-Cu) を使用してください。
Lead-free Solder
When soldering, use the Lead-free Solder (Sn-Ag-Cu).

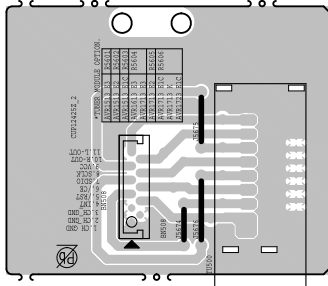


REGULATOR
(B SIDE)

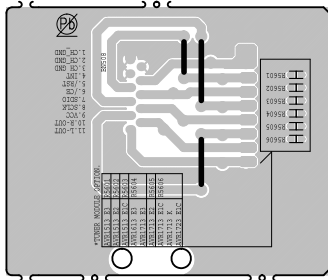
AVRE200_X500_POWER_MP_CUP12513Z_A

鉛フリー半田
半田付けには、鉛フリー半田 (Sn-Ag-Cu) を使用してください。
Lead-free Solder
When soldering, use the Lead-free Solder (Sn-Ag-Cu).

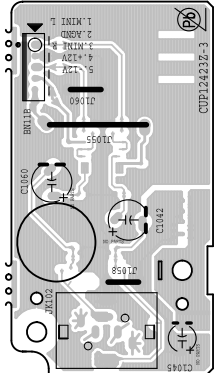
**TUNER
(A SIDE)**



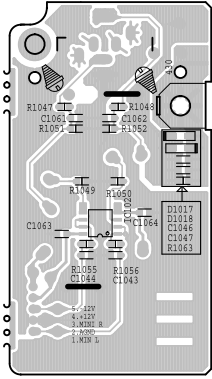
**TUNER
(B SIDE)**



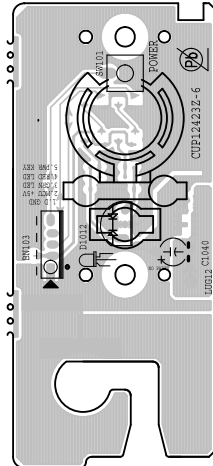
**PORTABLE
(A SIDE)**



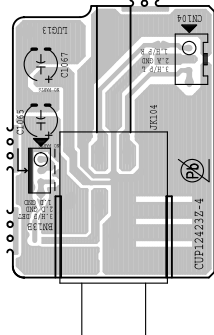
**PORTABLE
(B SIDE)**



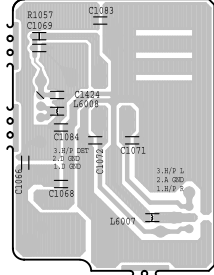
**POWER KNOB
(A SIDE)**



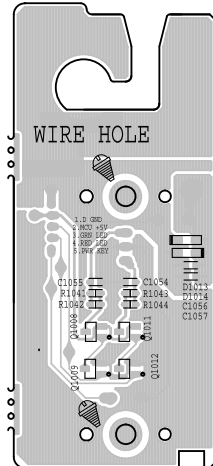
**HEADPHONE
(A SIDE)**



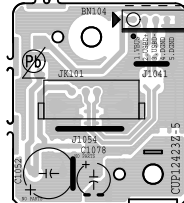
**HEADPHONE
(B SIDE)**



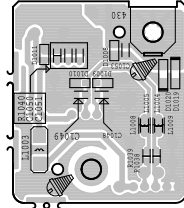
**POWER KNOB
(B SIDE)**



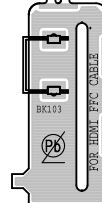
**USB
(A SIDE)**



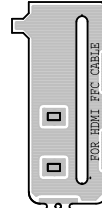
**USB
(B SIDE)**



**FOR HDMI FFC CABLE
(A SIDE)**



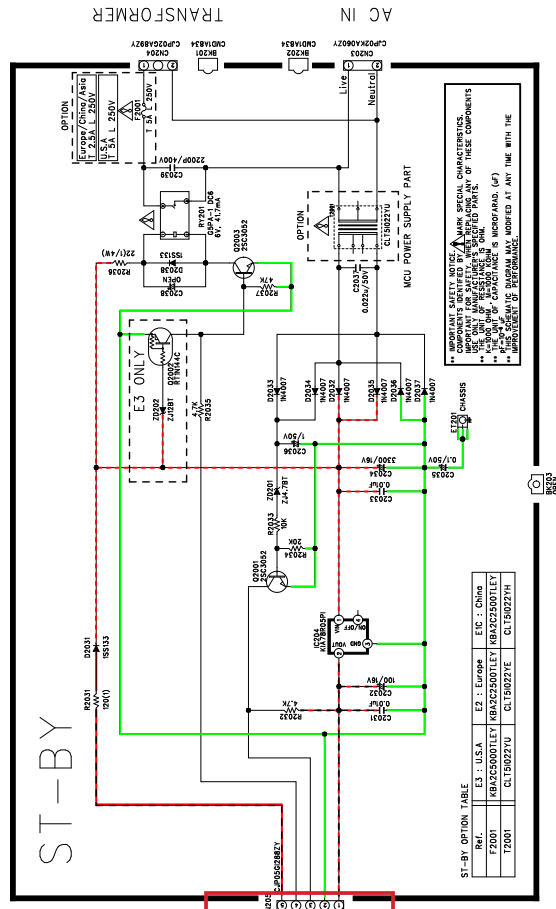
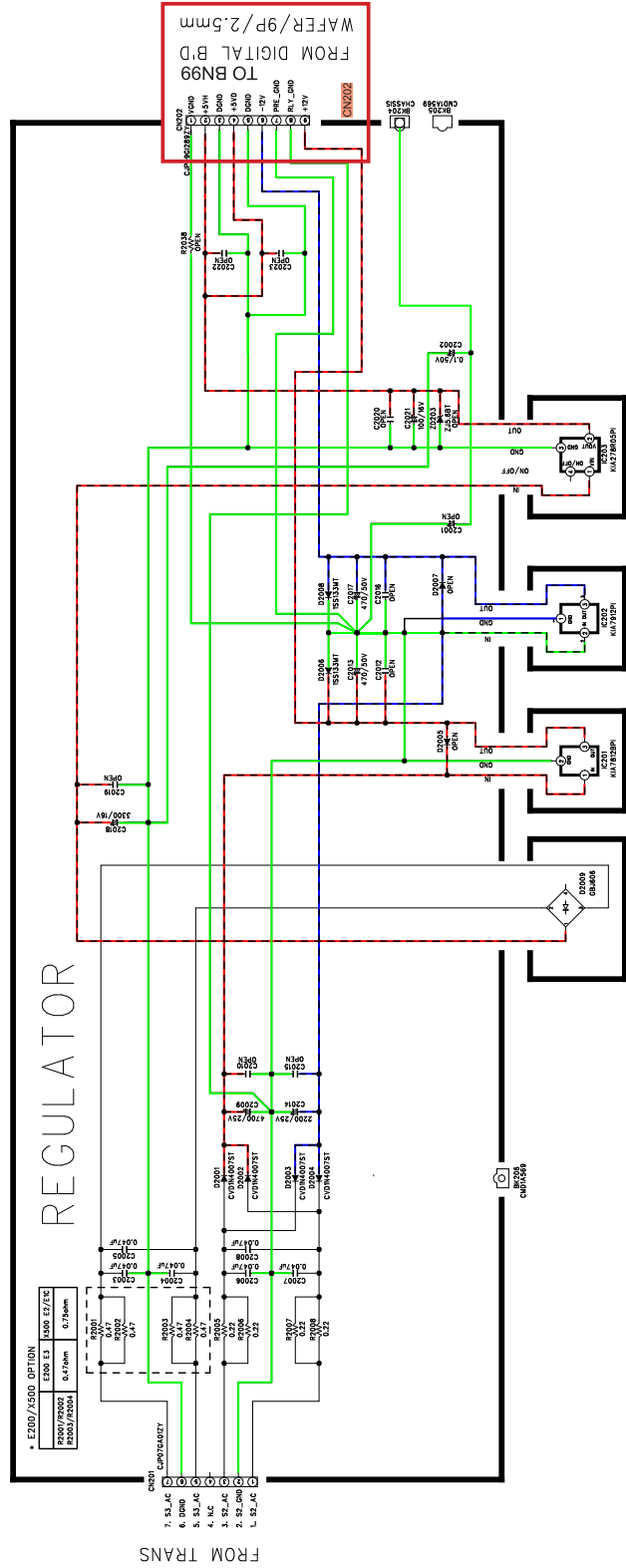
**FOR HDMI FFC CABLE
(B SIDE)**



鉛フリー半田
半田付けには、鉛フリー半田 (Sn-Ag-Cu) を使用してください。
Lead-free Solder
When soldering, use the Lead-free Solder (Sn-Ag-Cu).

POWER PART

REGULATOR



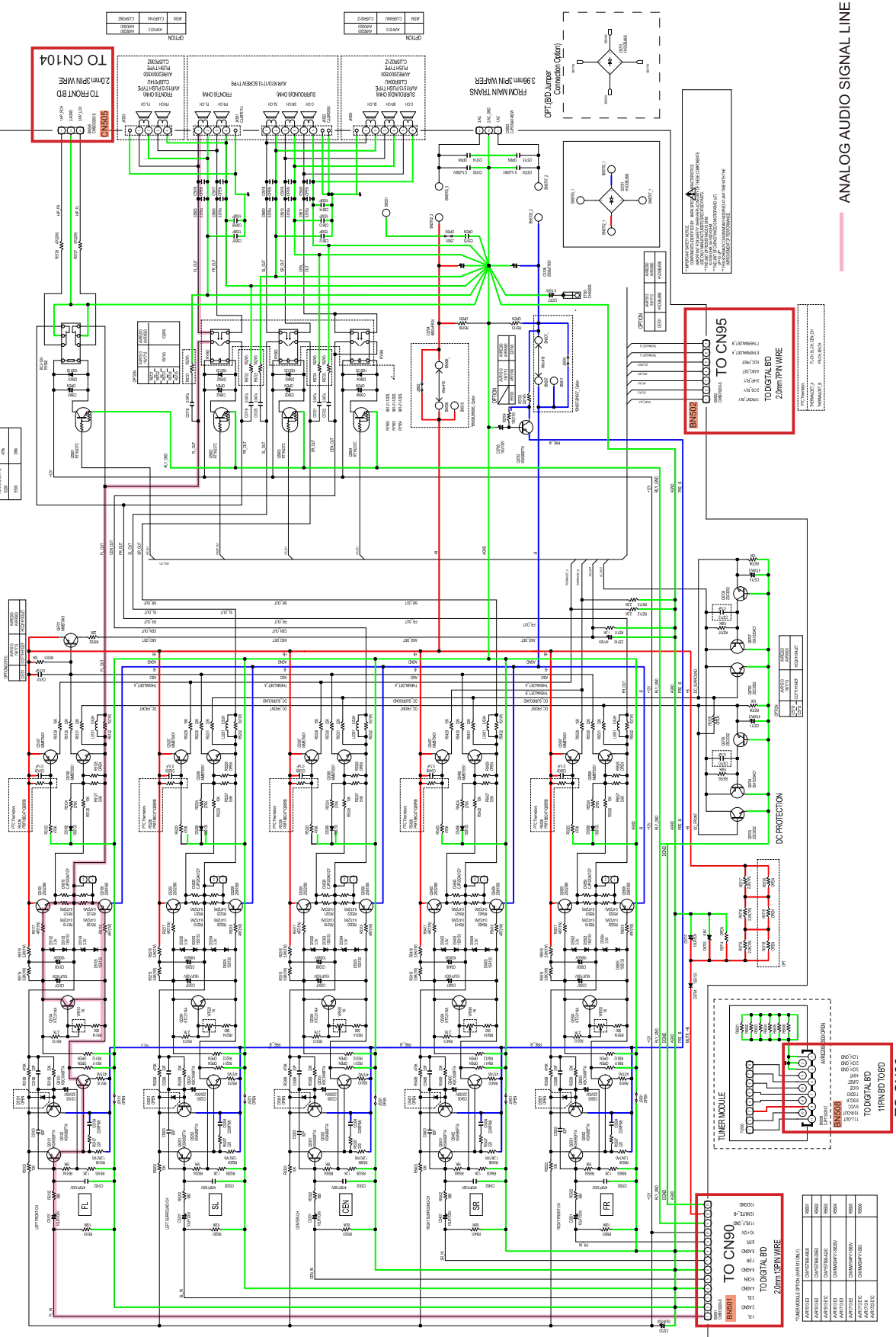
SCHEMATIC DIAGRAMS (2/9)

POWER PART

— GND — POWER + — POWER - — STBY POWER

MAIN PART

ITEM	DESCRIPTION	QTY	REVISION	DATE	BY	CHKD	APPROVED
1
2
3
4
5
6
7
8
9
10
11
12
13
14
15
16

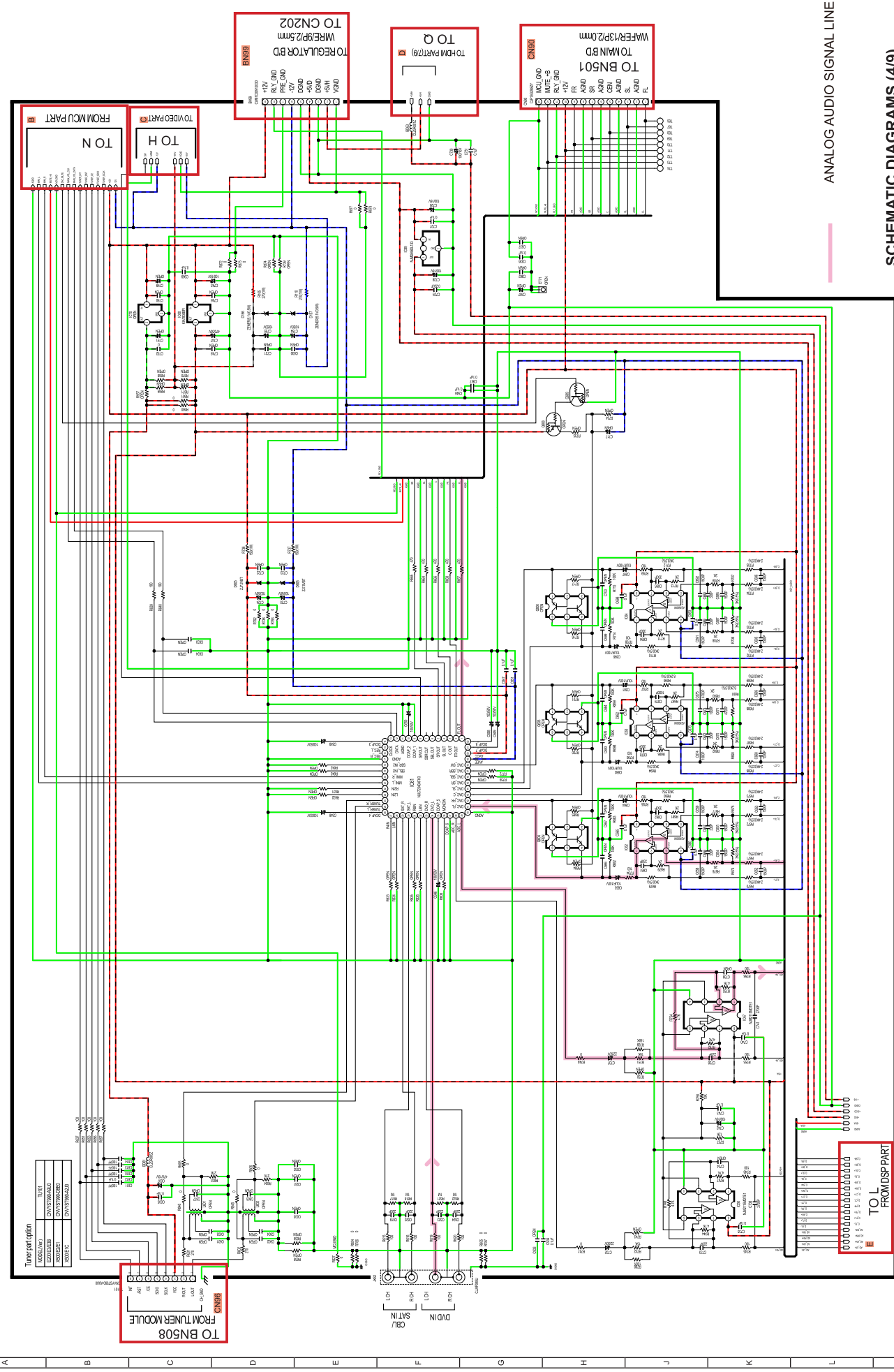


— GND — POWER + — POWER — — STBY POWER

ANALOG AUDIO SIGNAL LINE

SCHEMATIC DIAGRAMS (3/9) MAIN PART

INPUT & VOLUME PART

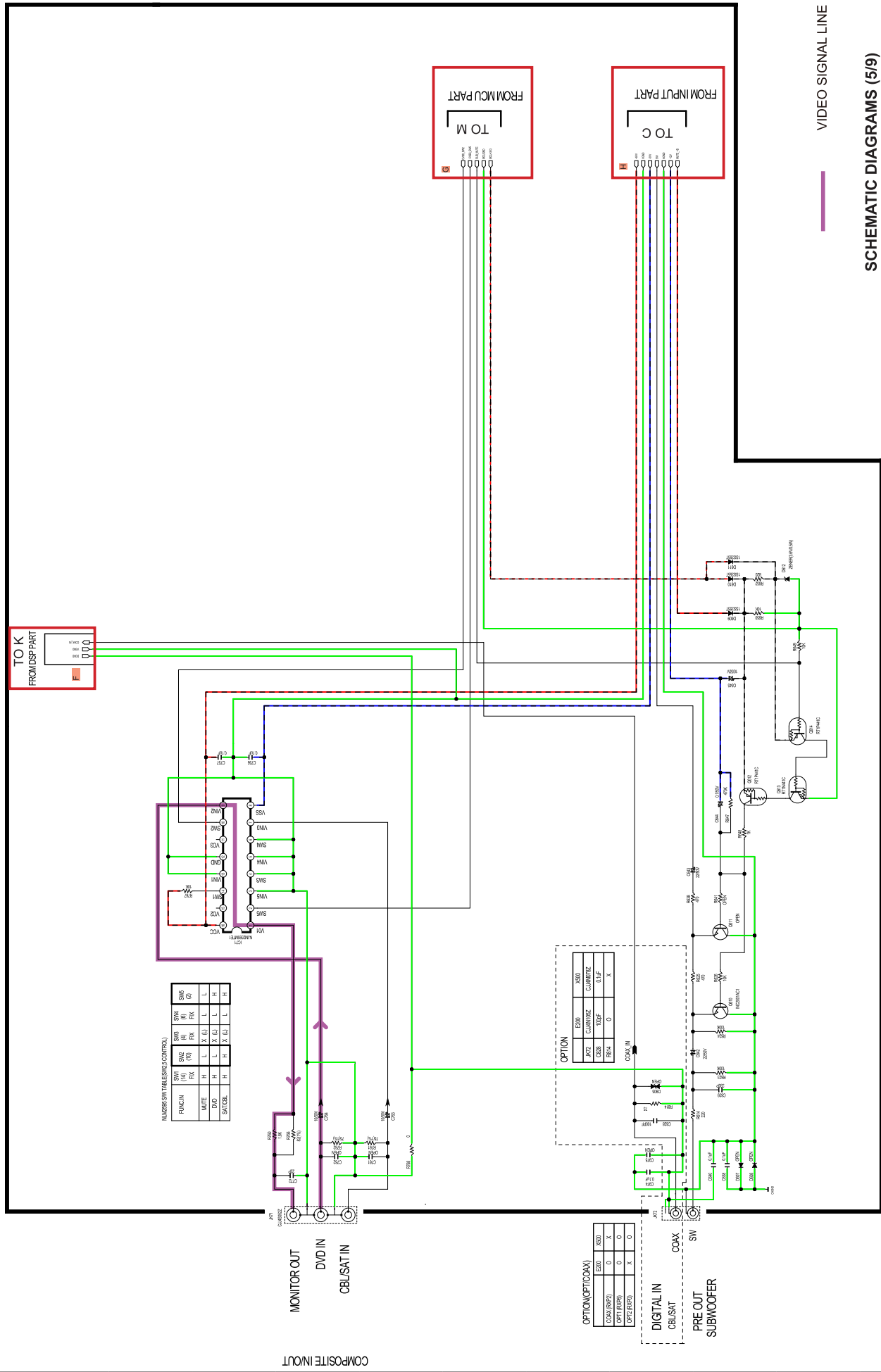


ANALOG AUDIO SIGNAL LINE

SCHEMATIC DIAGRAMS (4/9) INPUT & VOLUME PART

— GND
— POWER +
— POWER -
- - - STBY POWER

VIDEO PART (PRE OUT-SUBWOOFER)



NUMERICAL SWITCHES (CONTROLS)

FUNC IN	SWZ	SWZ	SMS
MUTE	FX	BI	(C)
MUTE	H	L	X (L)
DVD	H	L	X (L)
SAT/COIL	H	L	X (L)

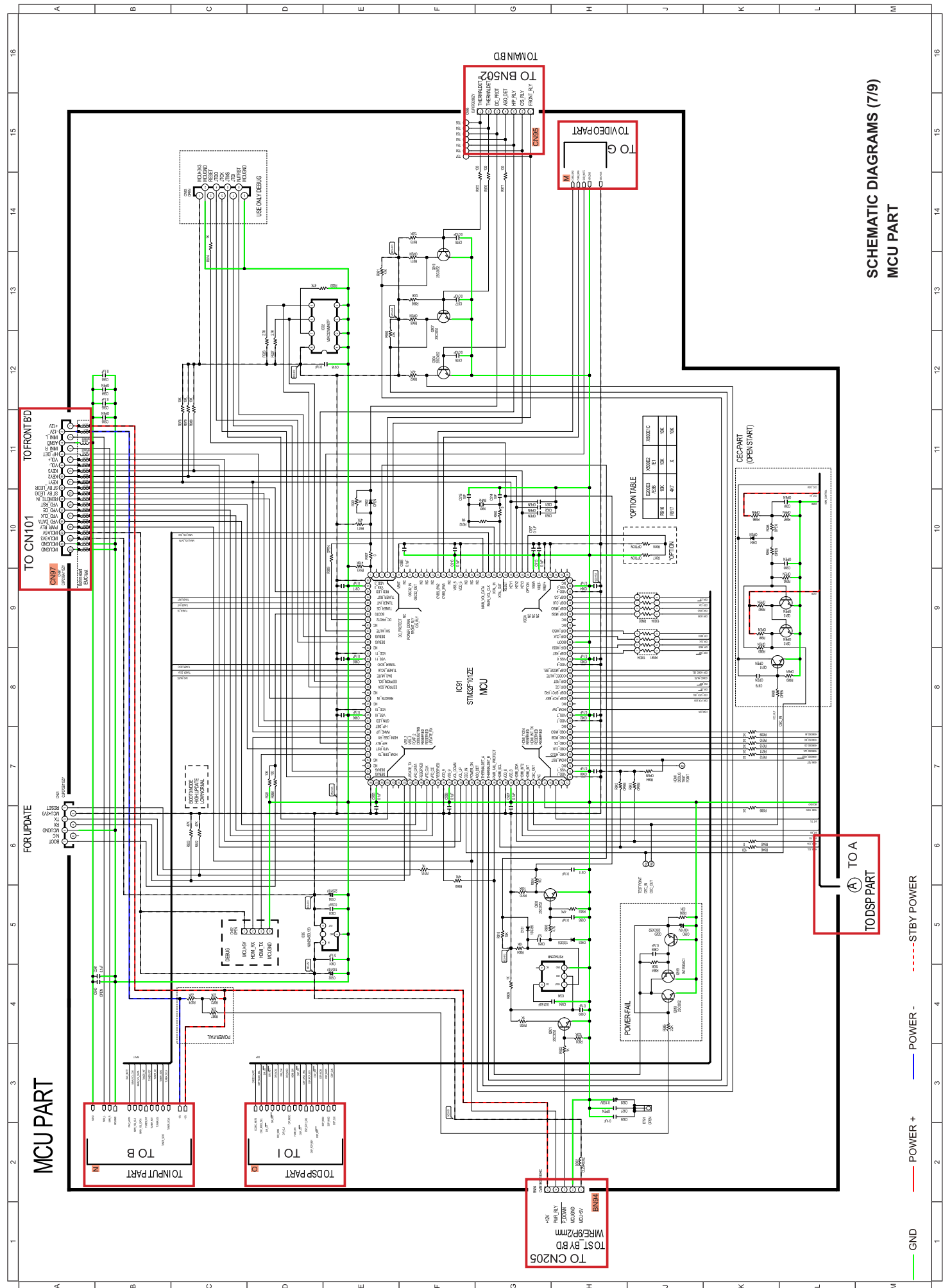
OPTION

EX00	X500
AP72	CLAMP/SHZ
CR28	100NF
RM14	O

OPTION (OPT/COAX)

EX00	X500
COAX (R42)	O
OPTI (R42)	X

SCHEMATIC DIAGRAMS (5/9)
VIDEO PART
(PRE OUT-SUBWOOFER)



MCU PART

**SCHEMATIC DIAGRAMS (7/9)
MCU PART**

TO CN205
WIRE BY BOARD
TEST BY BOARD

TO B
TO INPUT PART

TO I
TO DSP PART

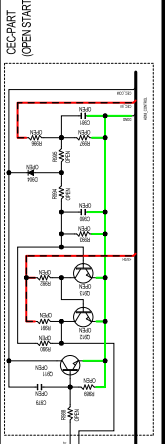
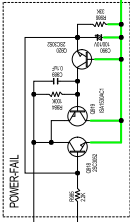
TO CN101
TO FRONT BOARD

TO VIDEO PART

TO BNS02
TO BNS02

TO A
TO DSP PART

IC91
STMP0702Z
MCU



OPTION TABLE

OPTION	RESISTOR	CAPACITOR	WIRE
OPTION 1	10K	100N	100N
OPTION 2	10K	100N	100N
OPTION 3	10K	100N	100N
OPTION 4	10K	100N	100N
OPTION 5	10K	100N	100N
OPTION 6	10K	100N	100N
OPTION 7	10K	100N	100N
OPTION 8	10K	100N	100N
OPTION 9	10K	100N	100N
OPTION 10	10K	100N	100N
OPTION 11	10K	100N	100N
OPTION 12	10K	100N	100N
OPTION 13	10K	100N	100N
OPTION 14	10K	100N	100N
OPTION 15	10K	100N	100N
OPTION 16	10K	100N	100N
OPTION 17	10K	100N	100N
OPTION 18	10K	100N	100N
OPTION 19	10K	100N	100N
OPTION 20	10K	100N	100N

— GND — POWER+ — POWER- - - - - STBY POWER

HDMI PART

0.01uF OPEN(ADI RECOMMENDATION)

TO C9A
FROM AD8195(F-HDMI IN)

IC11
AD7623BSTZ

FROM INPUT PART(3/7)

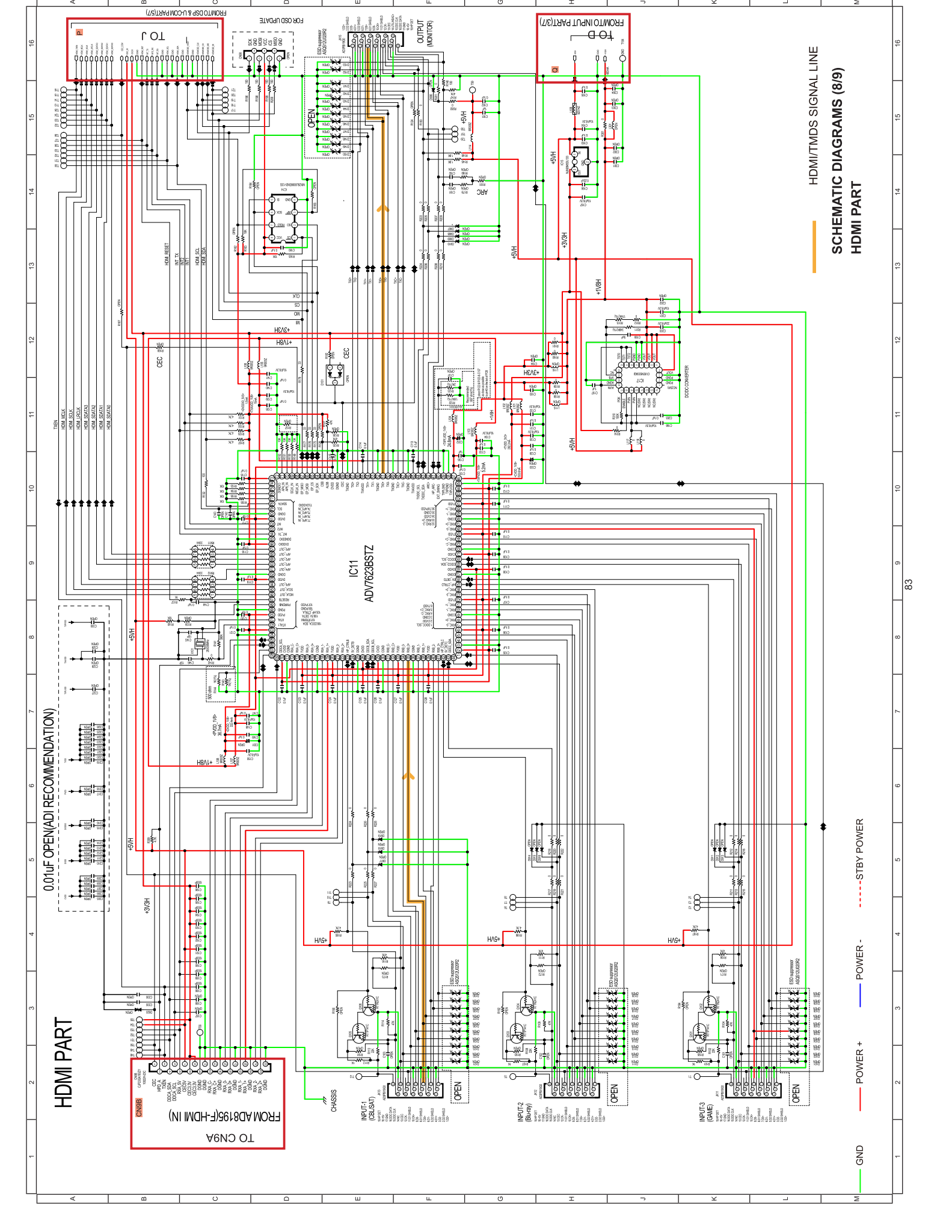
HDMI/TMDS SIGNAL LINE
SCHEMATIC DIAGRAMS (8/9)
HDMI PART

POWER +

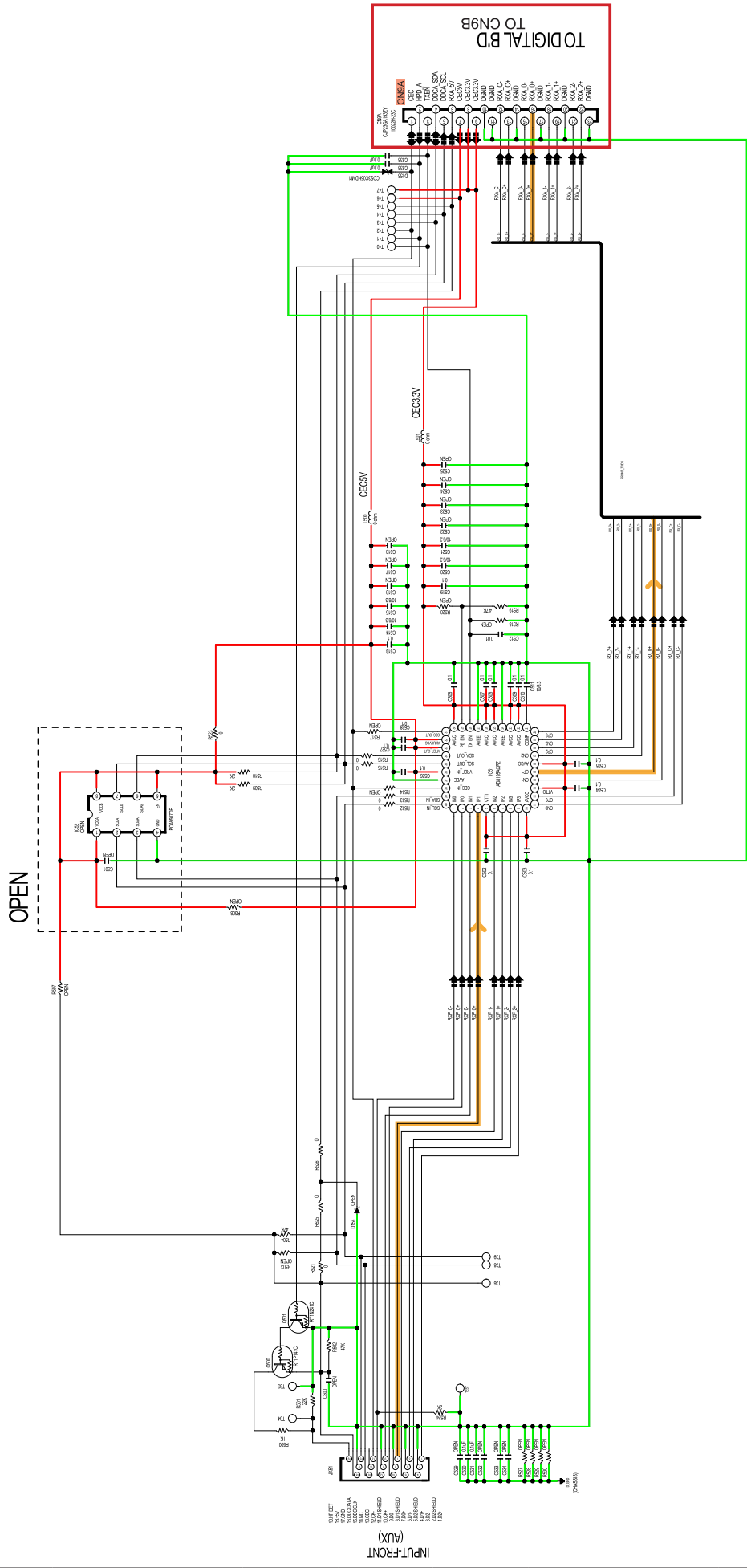
POWER -

STBY POWER

GND



FRONT-HDMI IN PART



— HDMI/TMDS SIGNAL LINE

SCHEMATIC DIAGRAMS (9/9) FRONT-HDMI IN PART

— GND — POWER + — POWER - - - - - STBY POWER