

## 7 Maintenance and care

### 7.2.2 Measurement of protective conductor resistance

Measure between safety contact of the mains plug and metal parts which can be touched, e.g. casing screws. During measuring, the entire length of the machine's connection lead, especially near the connection points, must be moved.

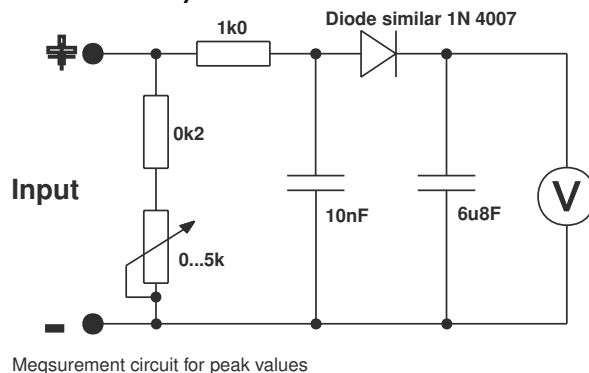
The resistance must be  $< 0.1\Omega$ . The measurement must be performed using at least 200 mA.

### 7.2.3 Measurement of insulation resistance

The machine must be disconnected from the mains. Open the welding machine and clean carefully as described in **Chap. 7.1**. Switch on mains switch.

- **Insulation resistance mains current circuit - casing:** Measure from a connection of the mains plug to the casing. The resistance must be  $> 2.5\text{ M}\Omega$ .
- **Insulation resistance welding current circuit - casing:** Measure between a welding socket and protective conductor. The resistance must be  $> 2.5\text{ M}\Omega$ .
- **Insulation resistance mains current circuit - welding current circuit:** Measure from a connection of the mains plug to a welding current socket. The resistance must be  $> 5.0\text{ M}\Omega$ .

### 7.2.4 Measurement of open circuit voltage (according to EN 60974-1 / VDE 0544 T1)



Connect the measuring circuit to the welding current sockets as shown in Fig. 1.

The voltmeter must indicate the mean value. Adjust the potentiometer from  $0\text{k}\Omega$  to  $5\text{k}\Omega$  during the measurement.

The measured voltage must not deviate from that specified on the rating plate ( $U_0$ ) by more than 10%.

### 7.2.5 Function test of the welding machine

Carry out a function test depending on the type of machine.

## 7.3 Repair work

Repair and maintenance work may only be performed by specialist staff. In all service matters, always consult your dealer. Return deliveries of defective equipment subject to warranty may only be made through your dealer.

When replacing parts, use only original spare parts.

When ordering spare parts, the machine type, serial number and item number of the machine, as well as the type description and item number of the spare part must be quoted.

If repair or maintenance work is carried out on this machine by personnel who are not trained and authorised to undertake such work, the right to claim under the warranty lapses.