

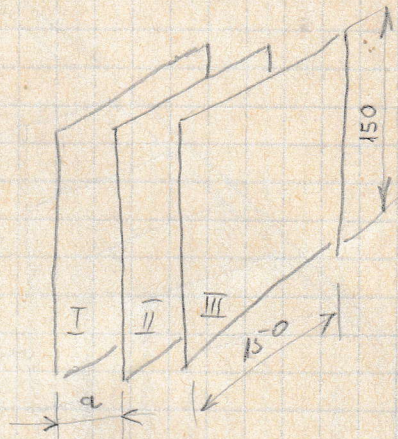
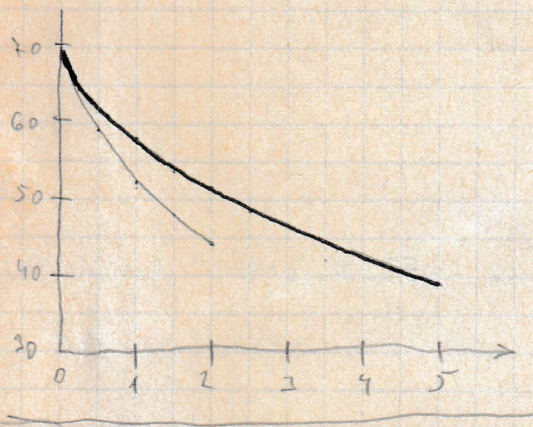
65x2 pla. d'ac.

$P_D = 13,5 \text{ W}$

$R_{th} = 3,4 \text{ } ^\circ\text{C/W}$

$P_D = 19 \text{ W} \rightarrow 9,5 \text{ W/cm}^2$

$R_{th} = 2,5 \text{ } ^\circ\text{C/W} \rightarrow 50 \text{ } ^\circ\text{C} - 11 -$



150x150x2,5

$P_D = 18 \text{ W}$

$2,66 \text{ } ^\circ\text{C/W}$

-720  
+700

I/III fetses  
II tires

