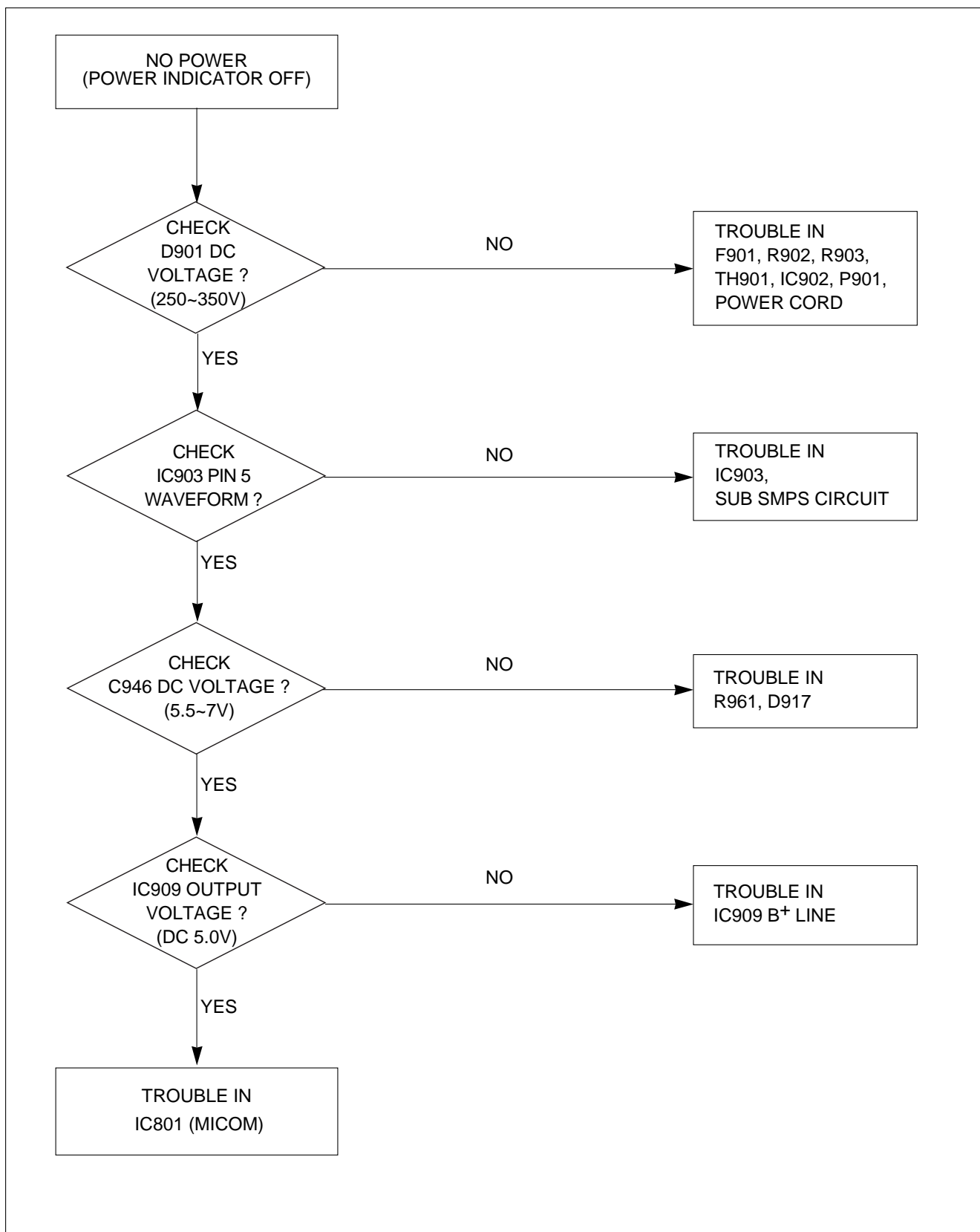
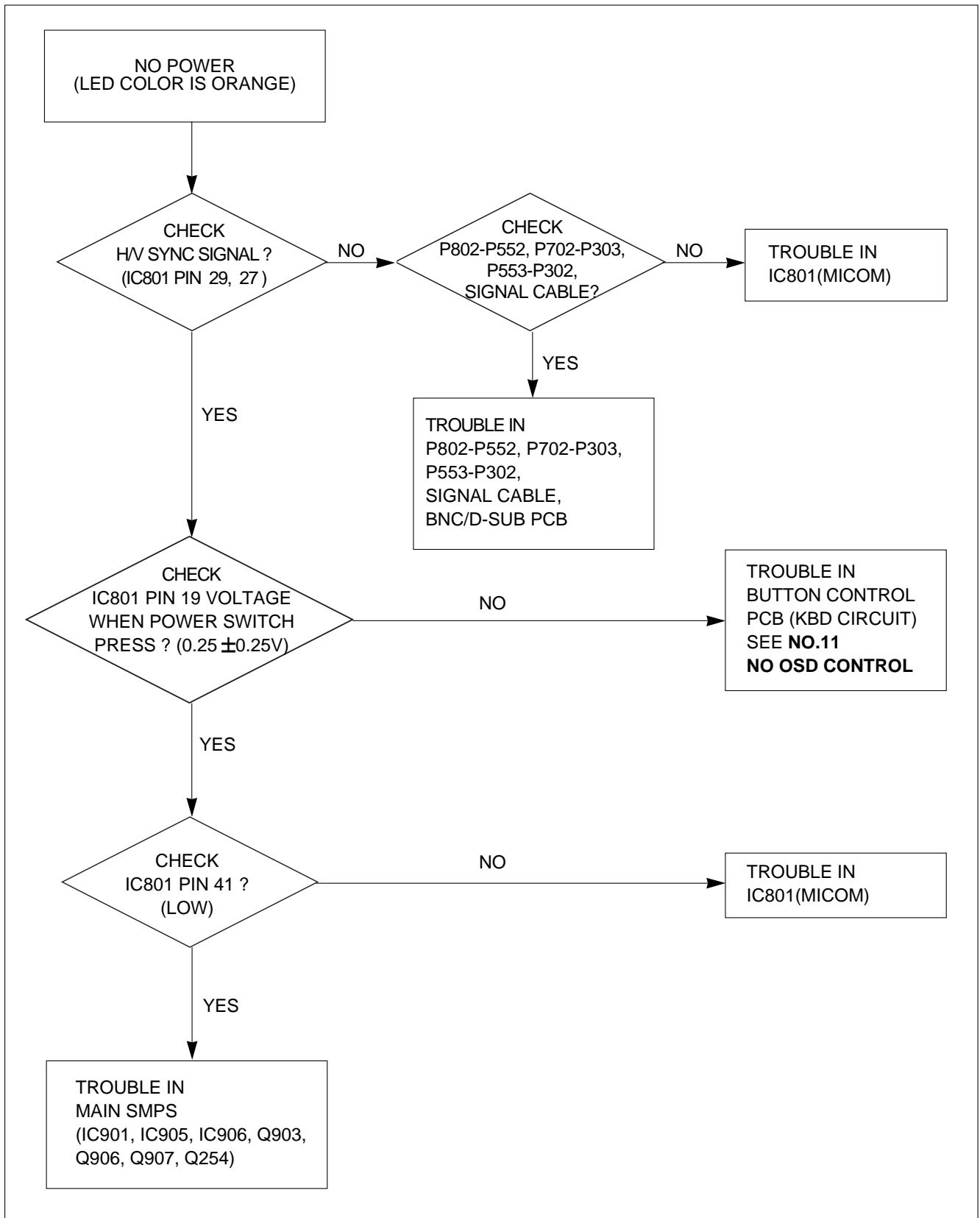


# TROUBLE-SHOOTING GUIDE

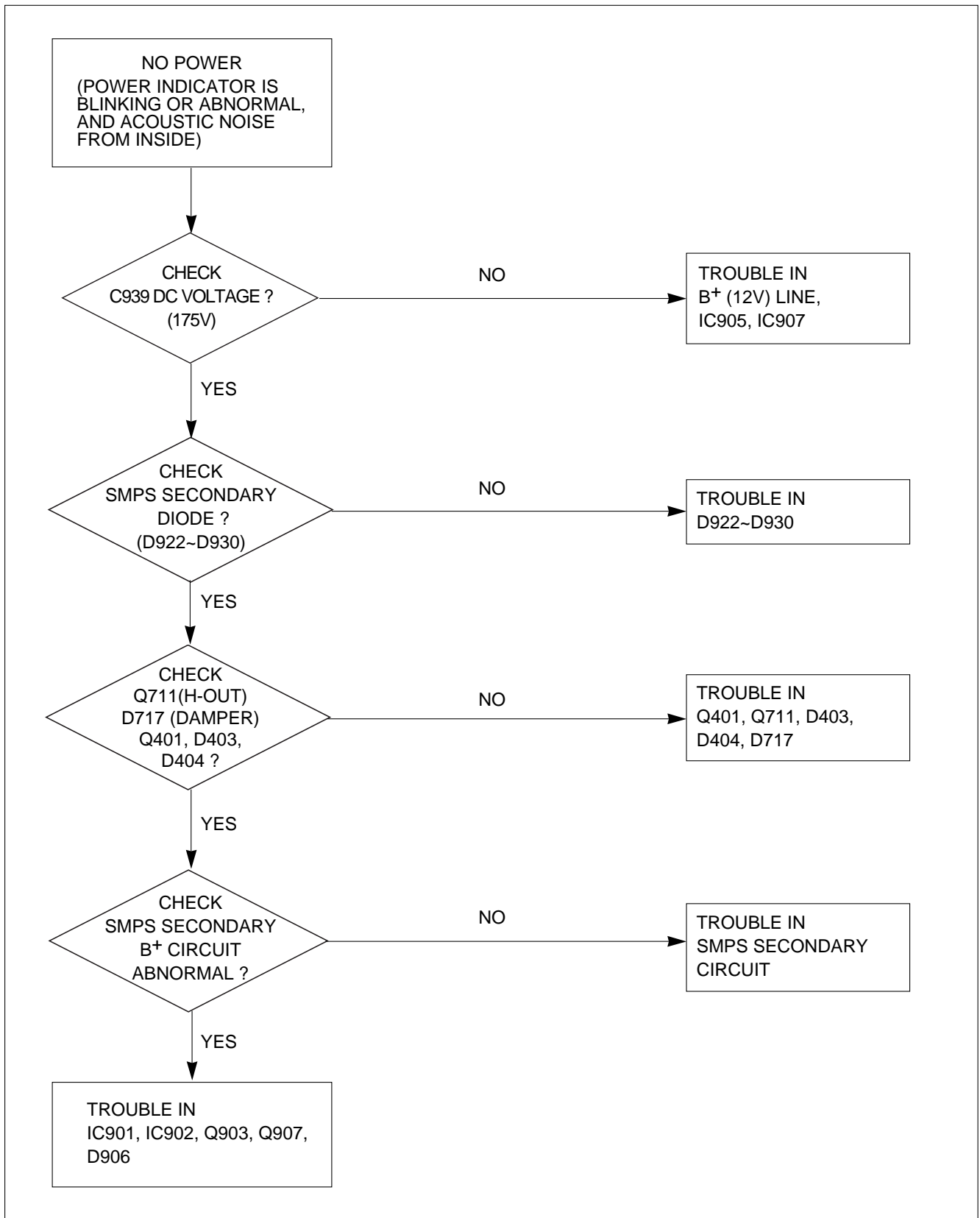
## 1. NO POWER-1



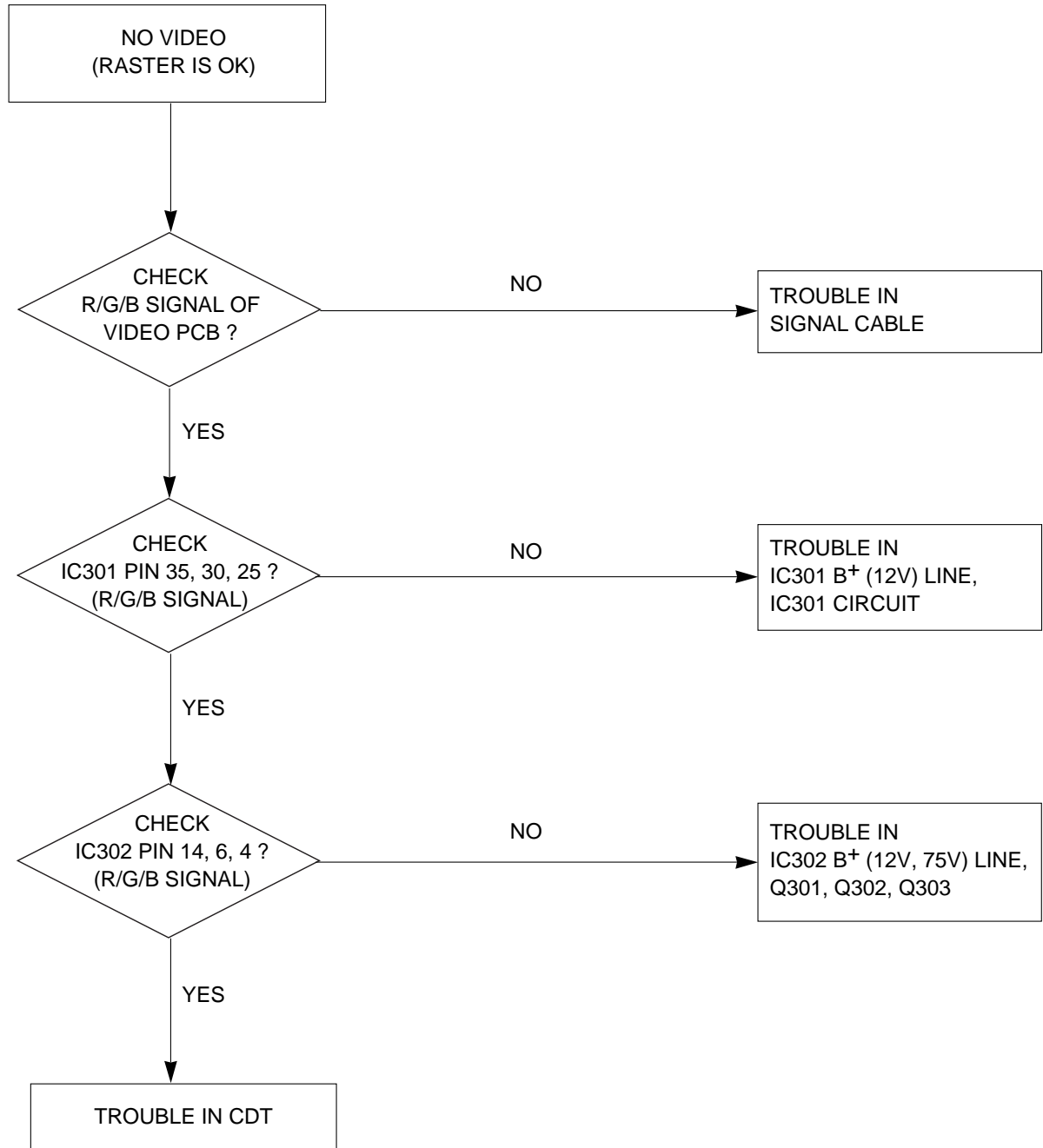
## 2. NO POWER-2



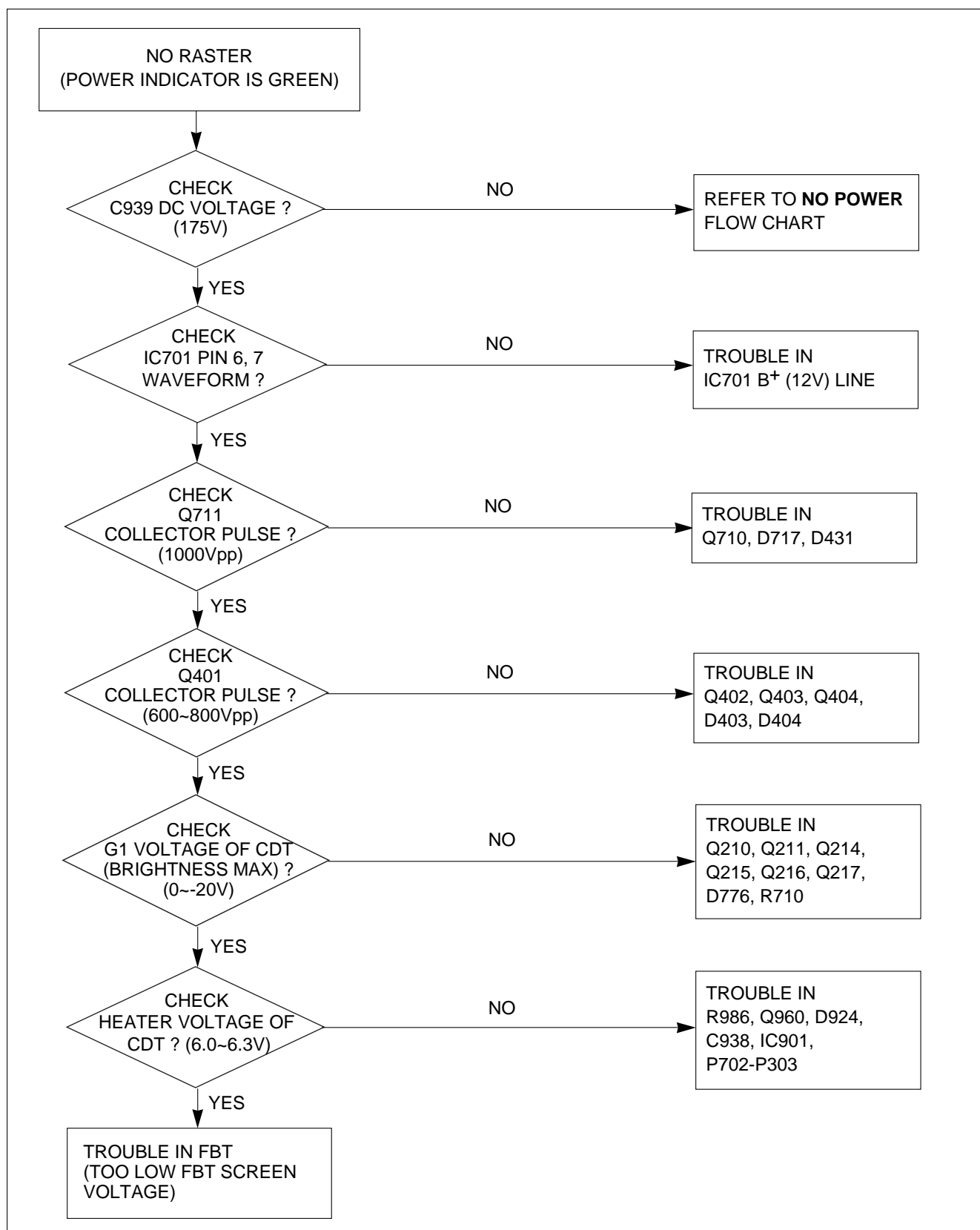
### 3. NO POWER-3



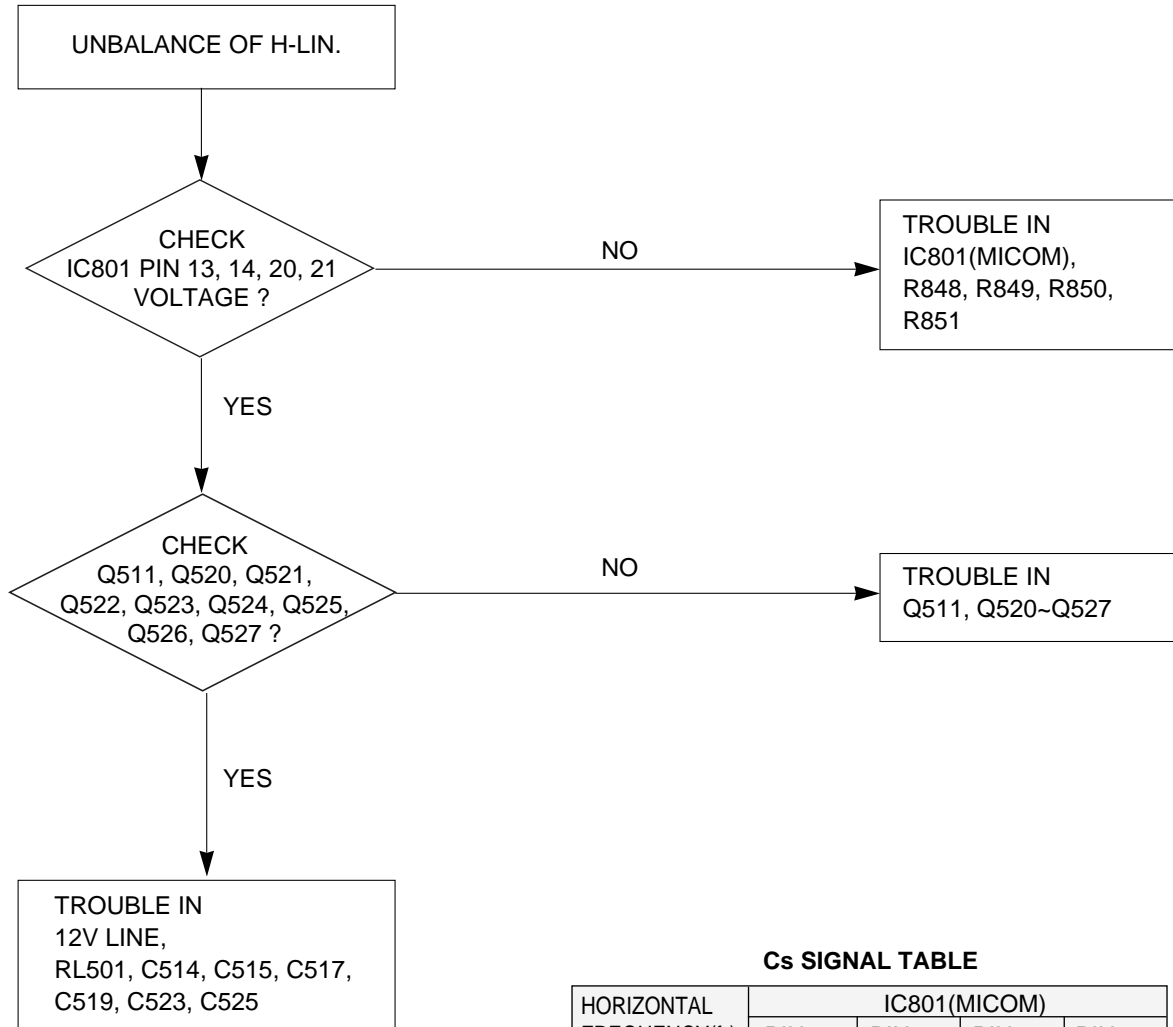
#### 4. NO VIDEO



## 5. NO RASTER



## 6. TROUBLE IN H-LINEARITY

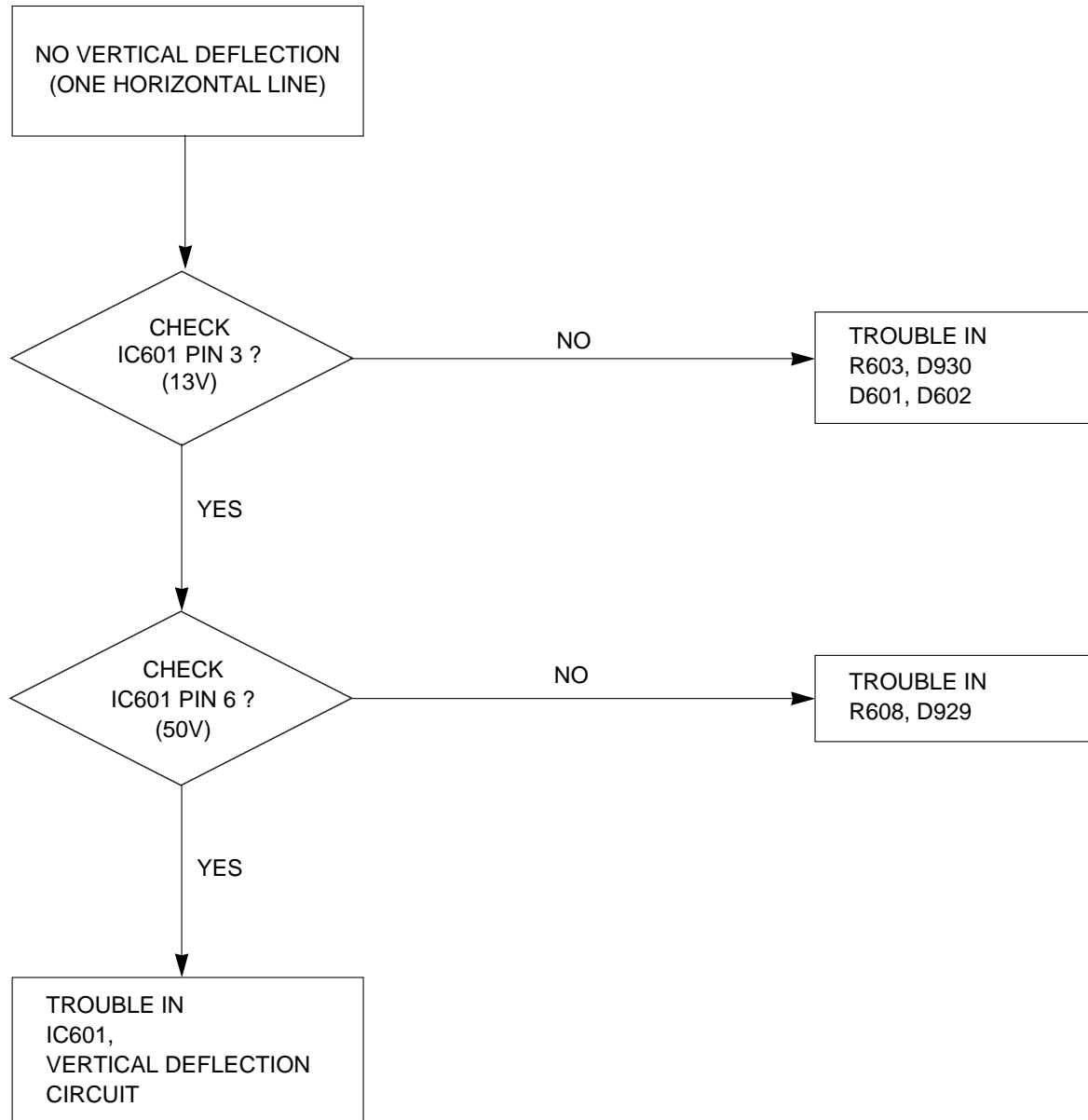


**Cs SIGNAL TABLE**

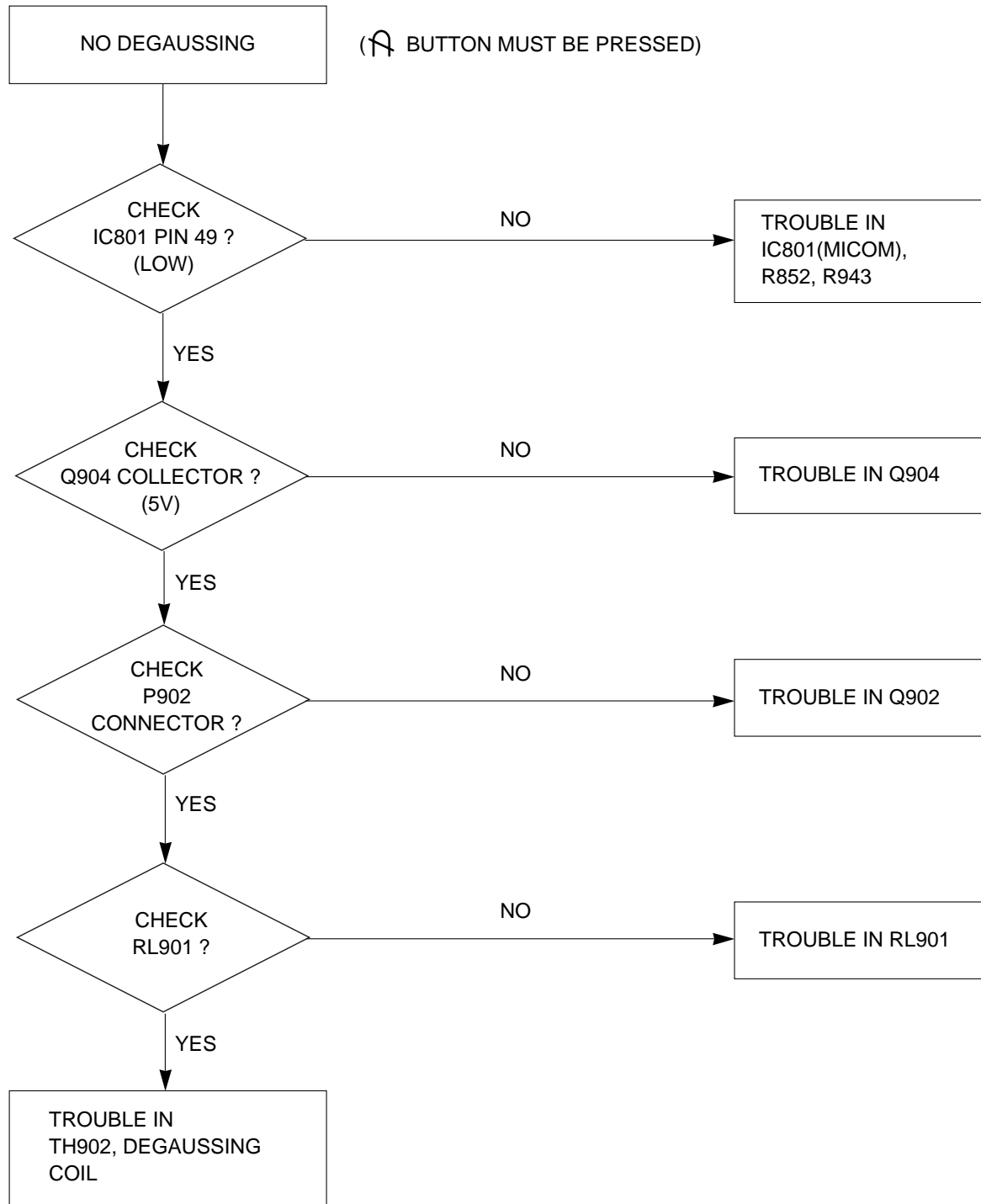
HORIZONTAL FREQUENCY(f <sub>H</sub> )	IC801(MICOM)			
	PIN 21	PIN 20	PIN 14	PIN 13
30.0~33.0kHz	L	L	L	L
33.1~36.5kHz	L	L	H	L
36.6~43.0kHz	L	H	H	L
43.1~53.0kHz	H	L	H	L
53.1~59.0kHz	H	H	L	L
59.1~65.0kHz	H	H	L	H
65.1~75.0kHz	H	H	H	L
75.1~85.0kHz	H	H	H	H
85.1~95.0kHz	H	H	H	H

( H: High  
L: Low

## 7. NO VERTICAL DEFLECTION

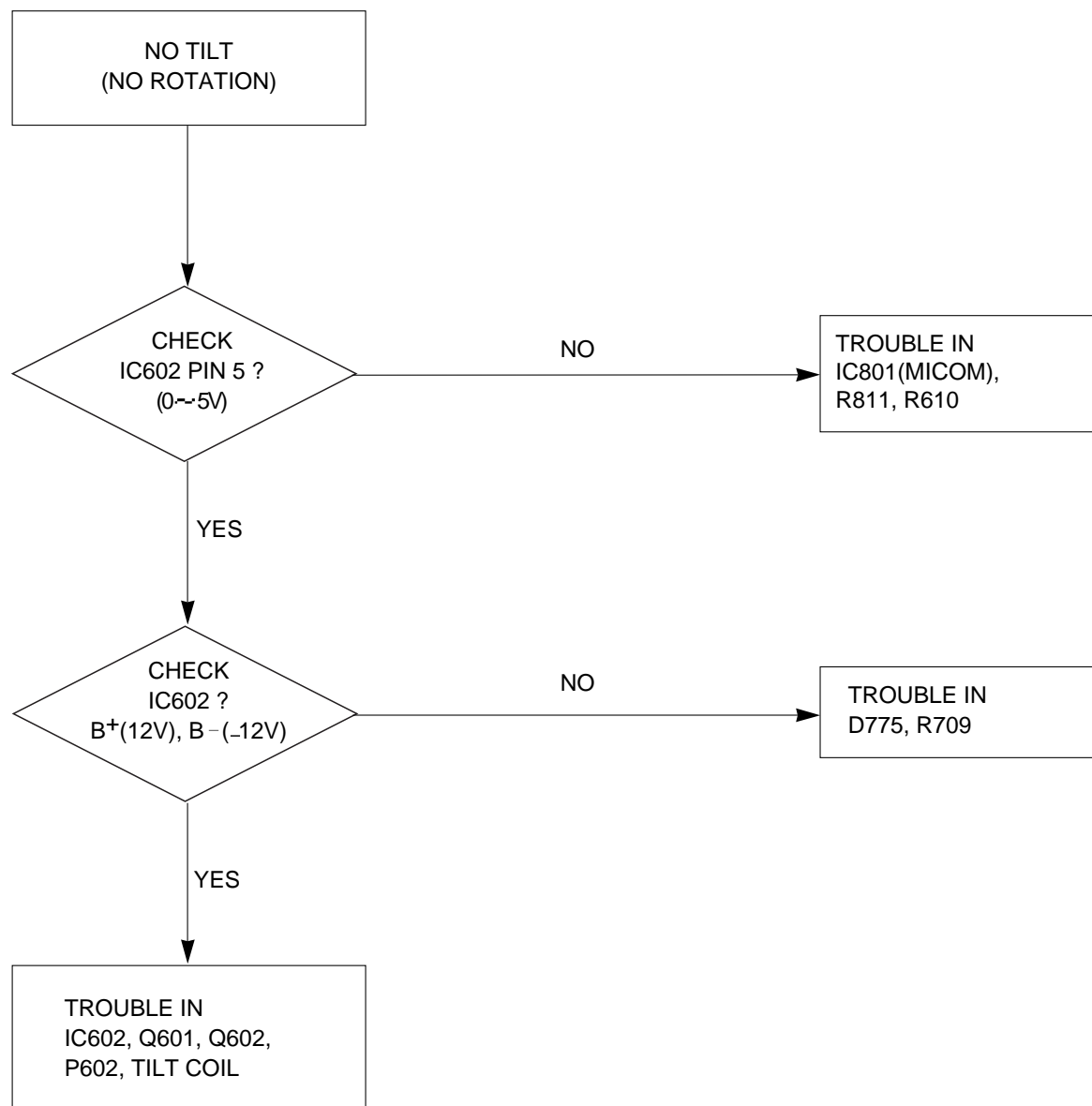


## 8. NO DEGAUSSING

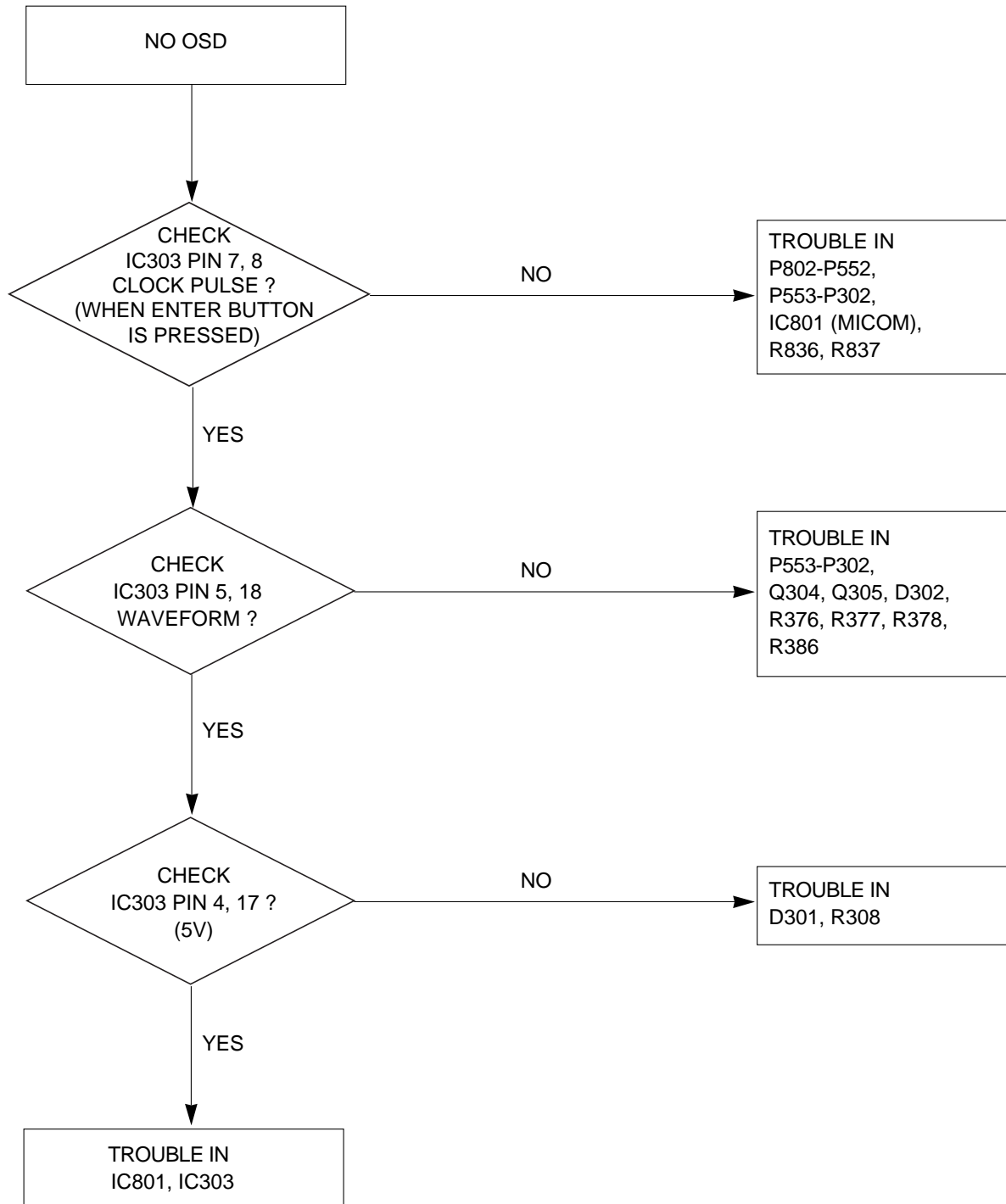




## 9. NO TILT (NO ROTATION)

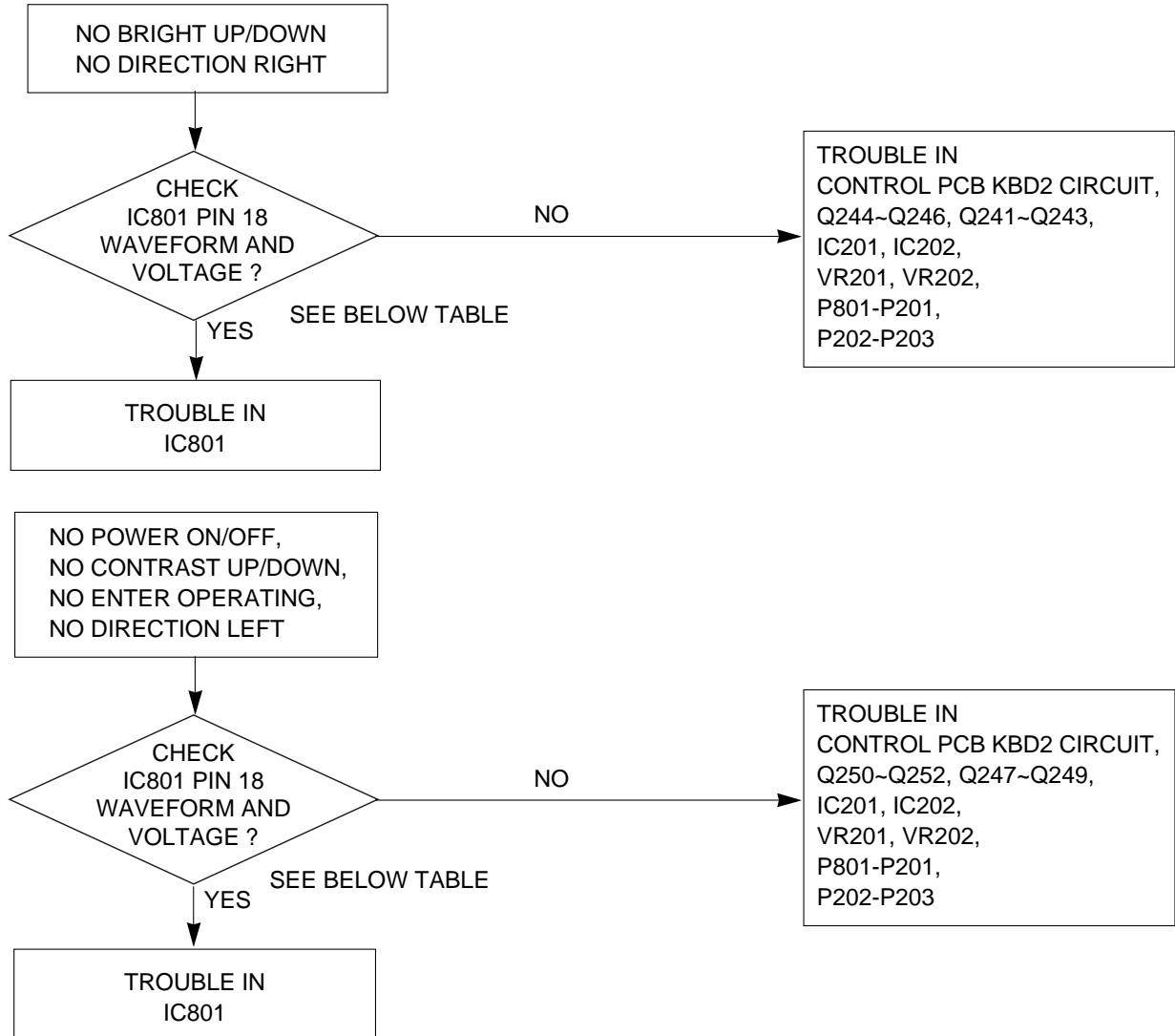


## 10. TROUBLE IN OSD



## 11. TROUBLE IN OSD BUTTON CONTROL (OSD IS NORMAL)

\* BUTTON or CONTROL KEY MUST BE PRESSED DURING CHECKING.



KBD1,2 VOLTAGE AND WAVEFORM TABLE

KEY OPERATING	IC801 PIN 19 VOLTAGE $\pm 0.25V$	IC801 PIN 18 VOLTAGE $\pm 0.25V$
BRIGHT UP	5.0V *	2.75V
BRIGHT DOWN	5.0V *	2.25V
DIRECTION RIGHT	1.75V *	5.0V
CONTRAST UP	5.0V	3.75V *
CONTRAST DOWN	5.0V	3.25V *
POWER ON/OFF	0.25V	5.0V
ENTER	0.75V	5.0V
DIRECTION LEFT	1.25V	5.0V *

NOTE:

\* Marks are checked with oscilloscope.

