

Improving the Power Factor of Isolated Flyback Converters for Residential ENERGY STAR® LED Luminaire Power Supplies

| Device | Application | Input Voltage | Output Power | Topology | I/O Isolation |
|---------|-------------|---------------|---------------|----------|---------------|
| NCP1014 | LED Driver | 90 to 265 Vac | Up to 8 Watts | Flyback | Yes |

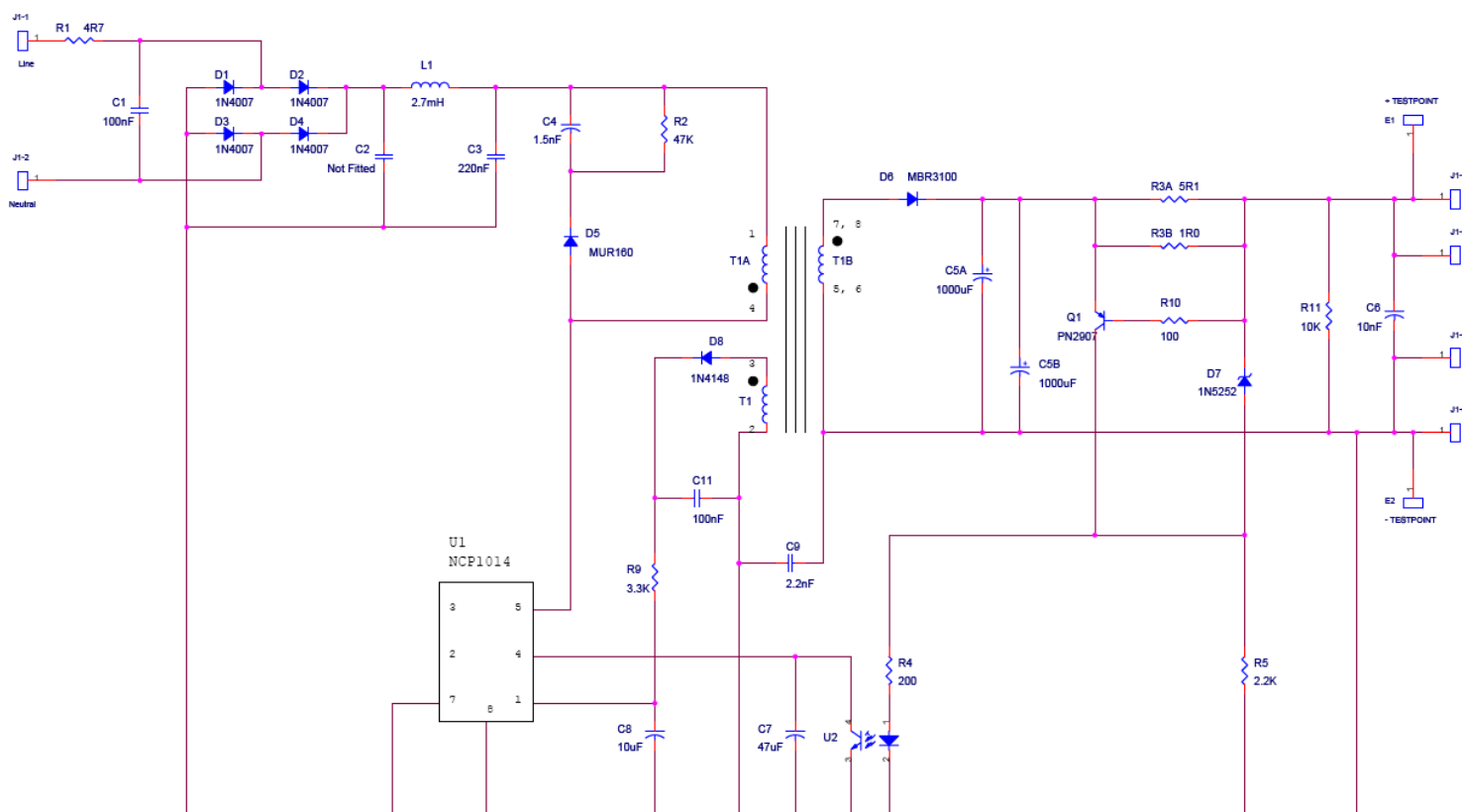


Figure 1: NCP1014 LED Driver with improved power factor

Overview

The U.S. Department of Energy (DOE) ENERGY STAR® Standard for Solid State Lighting Luminaires (Version 1.1 dated December 19, 2008) includes requirements for a minimum power factor of 0.7 for a variety of residential lighting products. Some of the typical products in this category include portable desk

lamps, under-cabinet lights, and outdoor porch lights.

One of the most common power supply topologies for these types of applications is an isolated flyback topology. Unfortunately standard design techniques used to design these supplies typically result in power factors in the range of 0.5-0.6. This design note describes why the

power factor is low and discusses techniques to improve the power factor and illustrates how an existing design was modified to substantially improve the power factor and easily comply with the residential power factor requirements.

Background

This Design Note outlines modifications to the [NCP1014LEDR2GEVD](#) 8 W Universal Input Isolated Constant Current evaluation board. The NCP1014LED evaluation board has been optimized to drive 1-8 high power high current LEDs such as the Cree XLAMP™ XR-E/XP-E, Luxeon™ Rebel, Seoul Semiconductor Z-Power, or OSRAM Golden Dragon™. The design is built around the NCP1014, a compact fixed frequency PWM converter that integrates a high voltage power switch with internal current limiting.

Since the device is limited to a maximum power of approximately 8 W with a universal AC input, the number of LEDs that can be driven is a function of the drive current. Specifically for this design note, the load will be one Cree XLAMP MC-E driven at 550 mA. The MC-E is comprised of 4 LEDs mounted on a single substrate and the maximum rated current is 700 mA.

A typical off-line flyback power converter, such as the one in the evaluation board mentioned above, utilizes a full wave bridge rectifier and substantial bulk capacitance preceding the switching regulator. This configuration is chosen because twice every line cycle the line power reduces and ultimately reaches zero before rising to the next peak. The bulk capacitor fills in providing a constant input to the switching regulator maintaining power flow to the load independent of line variations.

This configuration comes at the expense of poor utilization or power factor of the input line waveform. Line current is drawn in high amplitude narrow pulses near the peaks of the voltage waveform introducing disruptive high frequency harmonics. Passive solutions are well documented but typically introduce many

additional components. One approach is the valley-fill type rectifier where a collection of electrolytic capacitors and diodes increases the line frequency conduction angle resulting in improved power factor. In effect, this process charges the series-connected capacitors from the high line voltage at low current and discharges them to the switching regulator at a lower voltage with higher current. A typical application uses two capacitors and three diodes (figure 2) or, for enhanced power factor performance, three capacitors and six diodes (figure 3).

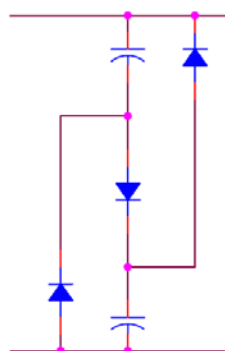


Figure 2:
Two Capacitor
Valley Fill

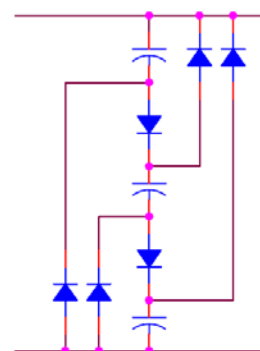


Figure 3:
Three-Capacitor
Valley Fill

While the valley-fill rectifier improves the utilization of the line current, it does not provide a constant input to the switching regulator. Power delivered to the load will have significant ripple at twice the line power frequency. Note that the four diodes rectifying the line power are still needed bringing the total number of diodes for this solution to 7 or 10. These diodes and multiple electrolytic capacitors add cost, degrade reliability and consume considerable circuit board area.

Another solution is an active power factor boost stage placed on the input of the switching regulator. This approach provides superior power factor with typical performance > 0.98, but it comes with increased parts count, reduced efficiency and increased complexity. This approach is most suitable at power levels well above the modest power level of these applications.

Approach

High power factor requires generally sinusoidal line current and minimizing the phase displacement between the line current and voltage.

The first step in this modification is reducing the capacitance before the switching device to allow a more sinusoidal input current. Electrolytic capacitor C2 is eliminated and C3 is reduced from 4.7 μ F to 220 nF allowing the rectified voltage to follow the line voltage thus eliminating the peak charging characteristic resulting in a more desirable sinusoidal current flow.

The input voltage to the power converter now follows a rectified sine shape at twice the line frequency. If the input current is kept to the same shape, the power factor will be high. The energy delivered to the load will follow the product of voltage and current which is a sine-squared shape. As a result of this sine-squared energy transfer, the load will experience ripple at twice the line frequency.

As mentioned above, the input current must be kept to a nearly sinusoidal shape to achieve the highest power factor. The key to this is not allowing the control loop to correct for load ripple by holding the feedback input at a constant level.

One option is to significantly increase the output capacitance to reduce the amount of 120 Hz ripple which some applications may require. The easier and less costly way of doing that is to filter the feedback signal going back to the controller establishing a constant level. This level fixes the maximum current in the power switch. The current in the power switch is determined by the applied instantaneous input voltage divided by the transformer primary inductance times the length of time the power switch is conducting. Since the NCP1014 operates at a fixed frequency, the current cannot rise beyond a

certain point as determined by the input voltage and primary inductance before the end of the switching period or conduction time. As a result of the conduction time limitation, the input current will follow the shape of the input voltage providing improved power factor.

The fixed feedback level represents the maximum current in the power switch corresponding to the peak of the input voltage wave shape. The peak level is established at the point where the proper average energy is transferred to the LED over a complete cycle of line input.

Achieving this fixed feedback level requires nothing more than increasing the feedback capacitor C7 to the point that any correction made by optocoupler U2 is averaged below the line frequency allowing only compensation for LED voltage and RMS line voltage variations.

The single stage converter is not without caveats. As mentioned above, energy is transferred to the secondary in a sine-squared shape. The flyback transformer must couple this energy and therefore be capable of processing peak power about 1.4 times the average delivered power.

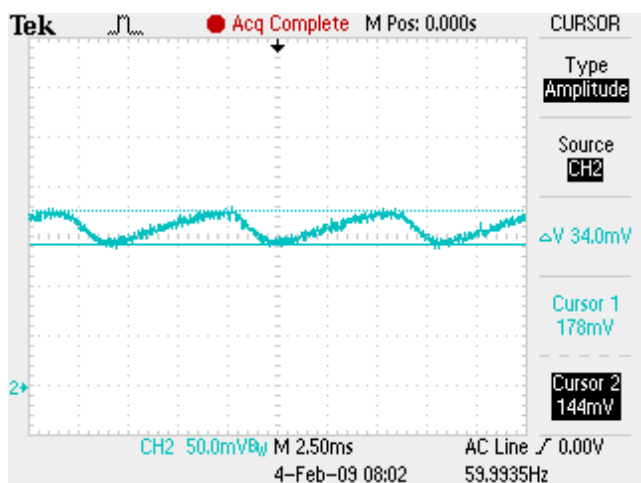
The peak ripple needs to be controlled to keep it below the maximum rating of the selected LED. Increasing the filter capacitor integrates the pulsating current delivered to the secondary and provides more constant level to the LED load. The capacitance can be tailored to limit ripple current as required. See the oscilloscope image of LED current next page (figure 4).

Line input filter capacitor C1 and inductor L1 were optimized to comply with conducted emissions requirements. Resistor R4 and R5 were changed to improve effectiveness of regulation transistor Q1. D6 was changed to reduce rectifier losses. Current sense resistors R3A and R3B were changed to increase output power.

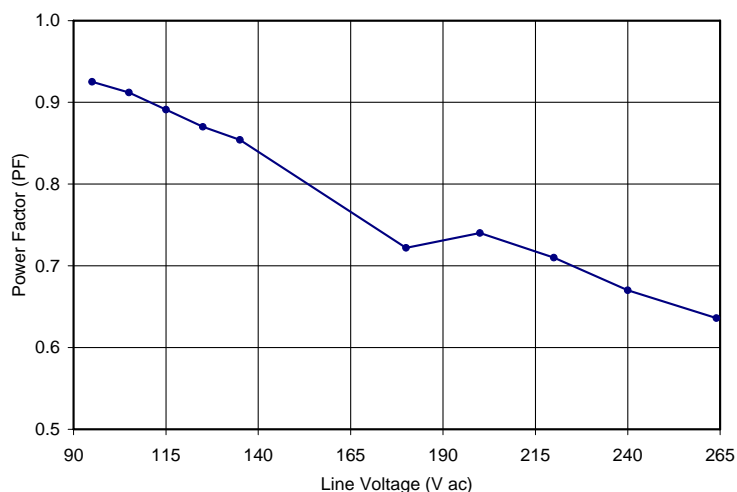
Typical performance of the LED driver demonstration board before and after

| Before | |
|---|---------------------------|
| Input: 115 Vac, 94.9 mA, 6.52 W, 0.597 power factor | Output: 361 mA, 12.66 Vdc |
| After Modifications | |
| Input: 115 Vac, 115 mA, 11.8 W, 0.891 power factor | Output: 545 mA, 14.75 Vdc |

(Note substantially more power is delivered with only a small increase in input current due to improved power factor.)



**Figure 4: LED Current (3.33 A/volt)
Ripple = 113 mA (p-p)**



**Figure 5: Power Factor vs. Line Voltage
 $T_a = 20^\circ\text{C}$, $P_{out} = 8.0\text{ W}$**

Component changes on NCP1014LEDR2GEVB Evaluation Board

| Designator | Original Value | New Value | New Part Number | Manufacturer |
|------------|---------------------------|--------------------------|-----------------|------------------|
| C1 | 10 nF 270 Vac | 100 nF 275 Vac | ECQ-U2A104ML | Panasonic |
| C2 | 4.7 μF 400 Vdc | Not Used | - | - |
| C3 | 4.7 μF 400 Vdc | 220 nF 275 Vac | ECQ-U2A224ML | Panasonic |
| C5A, C5B | 470 μF 25 Vdc | 1000 μF 25Vdc | ECA-1EM102 | Panasonic |
| C7 | 100 pF 100 Vdc | 47 μF 16Vdc | ECA-1CM470 | Panasonic |
| D6 | 1 A 60 V dc | 3 A 100Vdc | MBR3100 | ON Semiconductor |
| L1 | 1 mH @ 250 mA | 2.7 mH | RFB0810-272 | Coilcraft |
| R3A | 3.6 ohm 5% | 5.1 ohm 5% | - | Various |
| R3B | 3.6 ohm 5% | 1 ohm 5% | - | Various |
| R4 | 100 ohm 5% | 200 ohm 5% | - | Various |
| R5 | 200 ohm 5% | 2.2 K 5% | - | Various |

Conclusions

The modifications outlined in this design note improved the power factor from 0.597 to 0.861. This is well above the minimum power factor recommended by DOE Energy Star® Standard for Solid State lighting Luminaires for residential applications. LED current was increased to match performance requirements of the specific LEDs utilized in this example. As seen in the table below the input capacitance has been substantially reduced while the output capacitance has been doubled to keep the ripple well below the maximum current (700 mA) of the specific LED used in this design note.

Bibliography and References

- ENERGY STAR® Solid State Lighting (SSL) Luminaires requirements:
http://www.energystar.gov/index.cfm?c=revisions.ssl_luminaires
- ON Semiconductor's evaluation Board [NCP1014LEDR2GEVB](#): 360 mA, 24 V, Universal Input, Isolated Constant Current, LED driver

© 2009 ON Semiconductor.

Disclaimer: ON Semiconductor is providing this design note "AS IS" and does not assume any liability arising from its use; nor does ON Semiconductor convey any license to its or any third party's intellectual property rights. This document is provided only to assist customers in evaluation of the referenced circuit implementation and the recipient assumes all liability and risk associated with its use, including, but not limited to, compliance with all regulatory standards. ON Semiconductor may change any of its products at any time, without notice.

Design note created by Jim Young, email: james.young@onsemi.com